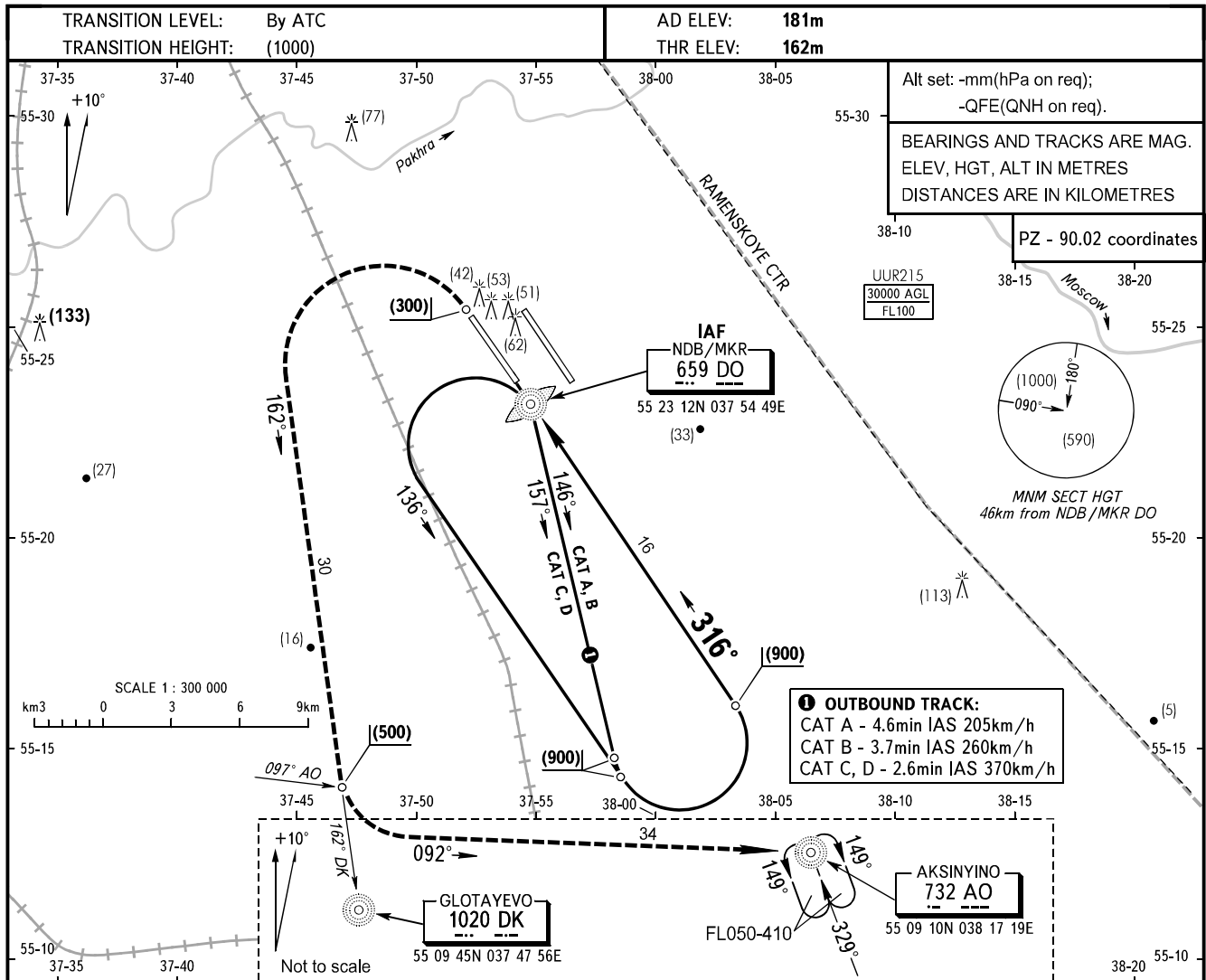


**INSTRUMENT
APPROACH
CHART - ICAO**

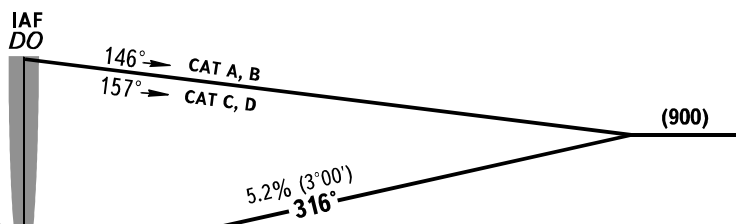
TOWER 1 **118.600**
DOMODEDOVO RADAR **127.700**

**MOSCOW, RUSSIA
DOMODEDOVO
NDB/MKR RWY 32L**



MISSED APPROACH

After passing NDB/MKR 659 DO, climb straight ahead to (300), turn LEFT to intercept QDM 162°DK, proceed to Glotayevo NDB to fix QDM 097° AO climbing to (500), after passing fix QDM 097° AO turn LEFT onto track 092° and proceed to Aksinyino NDB climbing to (600) or by ATS unit instruction.



OCA/H		A	B	C	D										
Straight-in	NDB/MKR	374(212)	374(212)	374(212)	374(212)										
	Approach														
GROUND SPEED		km/h	150	180	210	240	270	300	330	360	390	420	450		
RATE OF DESCENT		m/s	2.2	2.6	3.0	3.5	3.9	4.3	4.8	5.2	5.6	6.1	6.5		