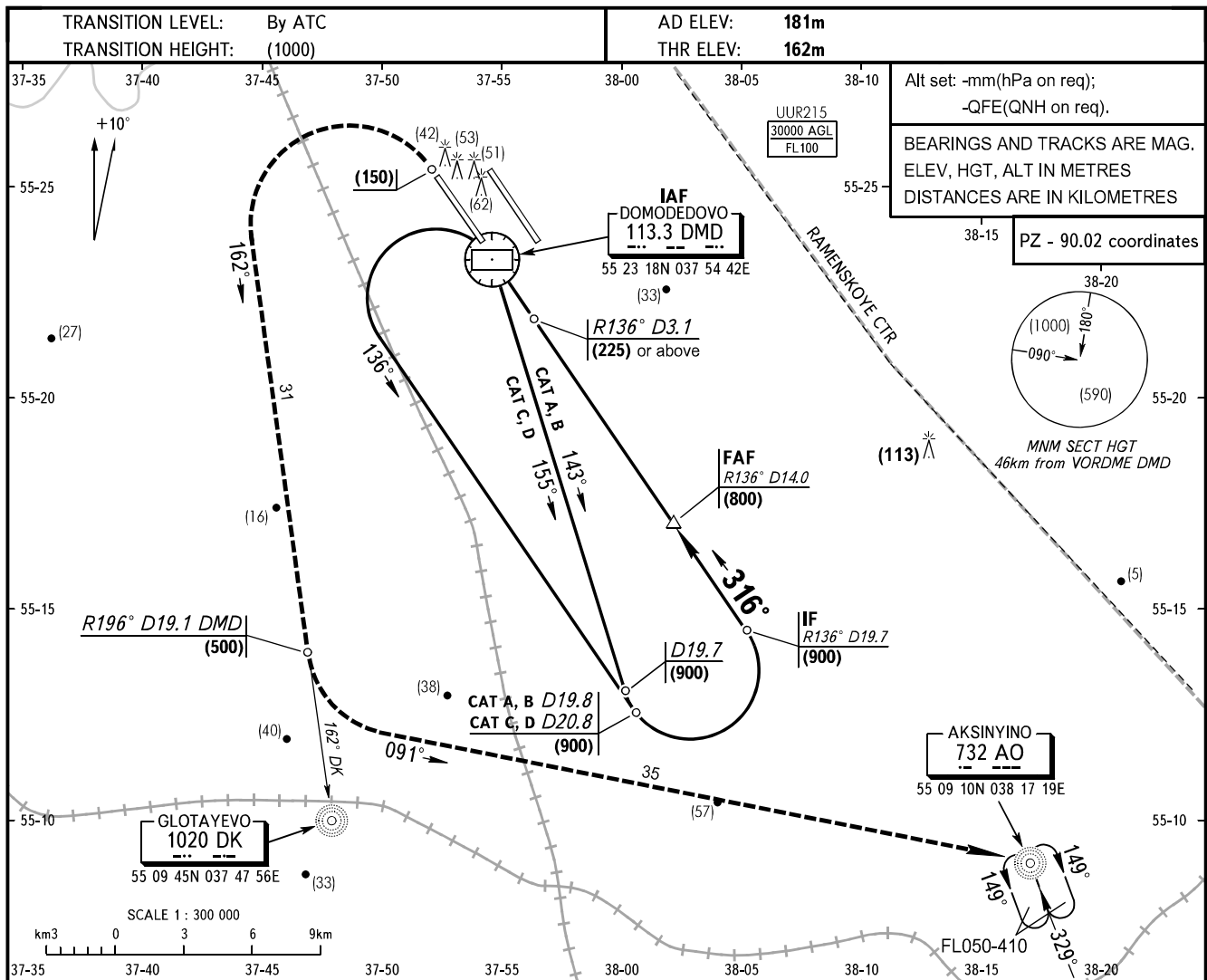


**INSTRUMENT
APPROACH
CHART - ICAO**

TOWER 1 **118.600**
DOMODEDOVO RADAR **127.700**

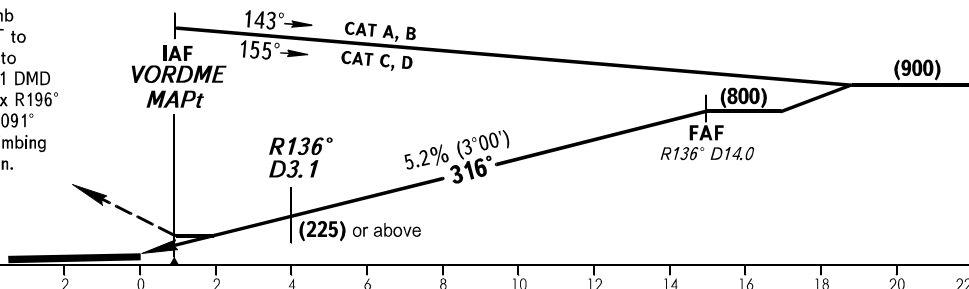
MOSCOW, RUSSIA
DOMODEDOVO
VORDME RWY 32L



DME DMD	7.0	5.0	3.0	1.0
HGT	(430)	(325)	(220)	(115)

MISSED APPROACH

After passing VORDME DMD, climb straight ahead to (150), turn LEFT to intercept QDM 162° DK, proceed to Glotayevo NDB to fix R196° D19.1 DMD climbing to (500), after passing fix R196° D19.1 DMD turn LEFT onto track 091° and proceed to Aksinyino NDB climbing to (600) or by ATS unit instruction.



OCA/H		A	B	C	D							
Straight-in	VORDME	268(106)	268(106)	268(106)	268(106)							
	Approach											
GROUND SPEED	km/h	150	180	210	240	270	300	330	360	390	420	450
FAF-MAPt 14000m	min:sec	5.36	4.40	4.00	3.30	3.06	2.48	2.33	2.20	2.09	2.00	1.52
RATE OF DESCENT	m/s	2.2	2.6	3.0	3.5	3.9	4.3	4.8	5.2	5.6	6.1	6.5