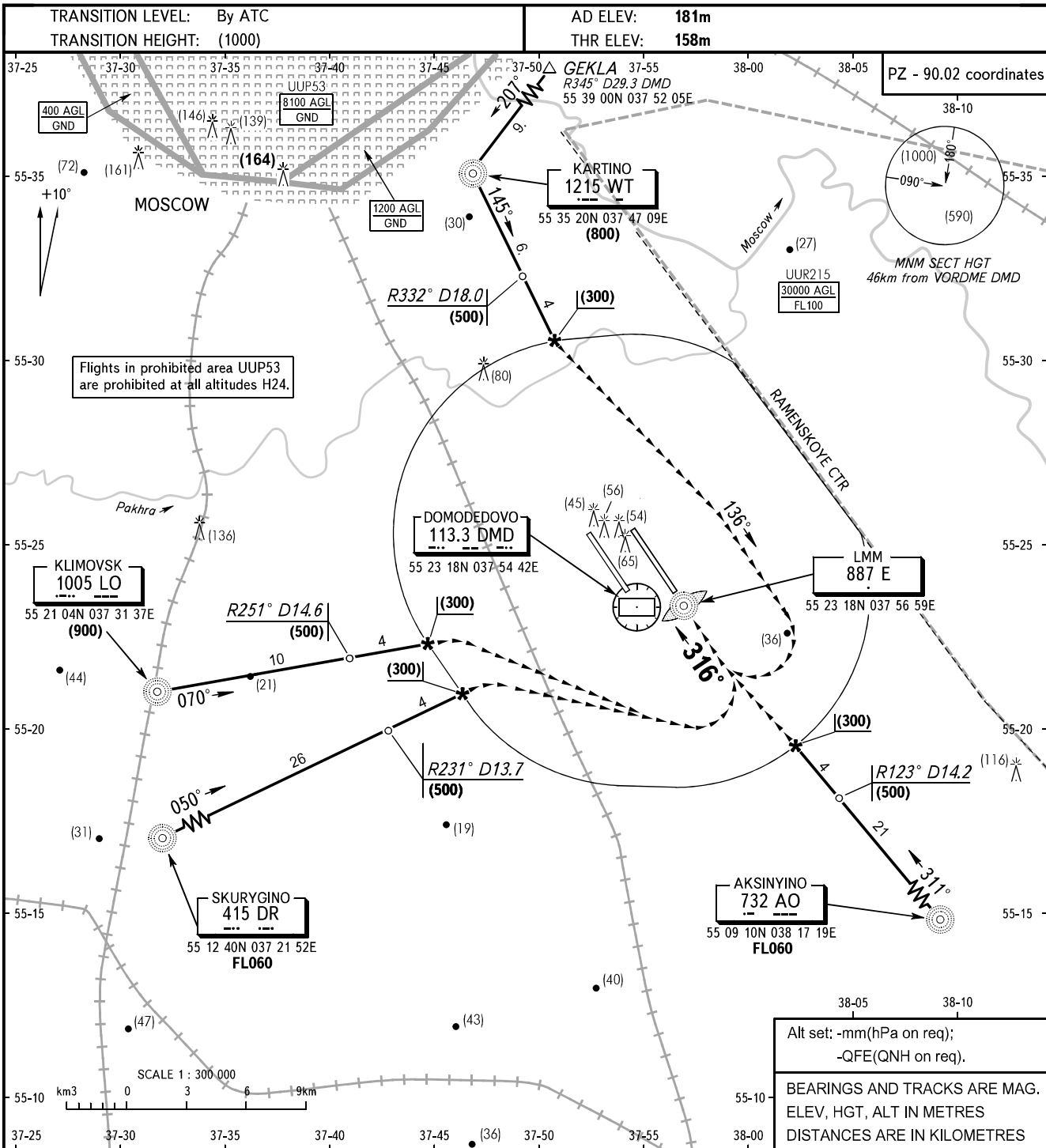


**VISUAL
APPROACH
CHART - ICAO**

**MOSCOW, RUSSIA
DOMODEDOVO
RWY 32R**

TOWER 2 **119.700**
DOMODEDOVO RADAR **127.700**



VOR 113.3 DMD shall be used as a guidance radio facility when proceeding from Klimovsk and Skurygino NDB. RWY 32R LMM 887 E shall be used as a guidance radio facility when proceeding from Aksinyino, Kartino NDB.

WARNING:
1. MAX IAS shall be 460km/h at altitudes below FL100.
2. All ACFT shall follow the noise abatement procedures at all times as in accordance with ICAO DOC 8168.

ACFT CAT		A	B	C	D	D-widebody
MET conditions	MDH, m	200	200	230	230	300
	Cloud base, m	400	400	400	400	400
	Visibility, m	6000	6000	6000	6000	6000

CHANGE: New chart