

**AERODROME
CHART - ICAO**

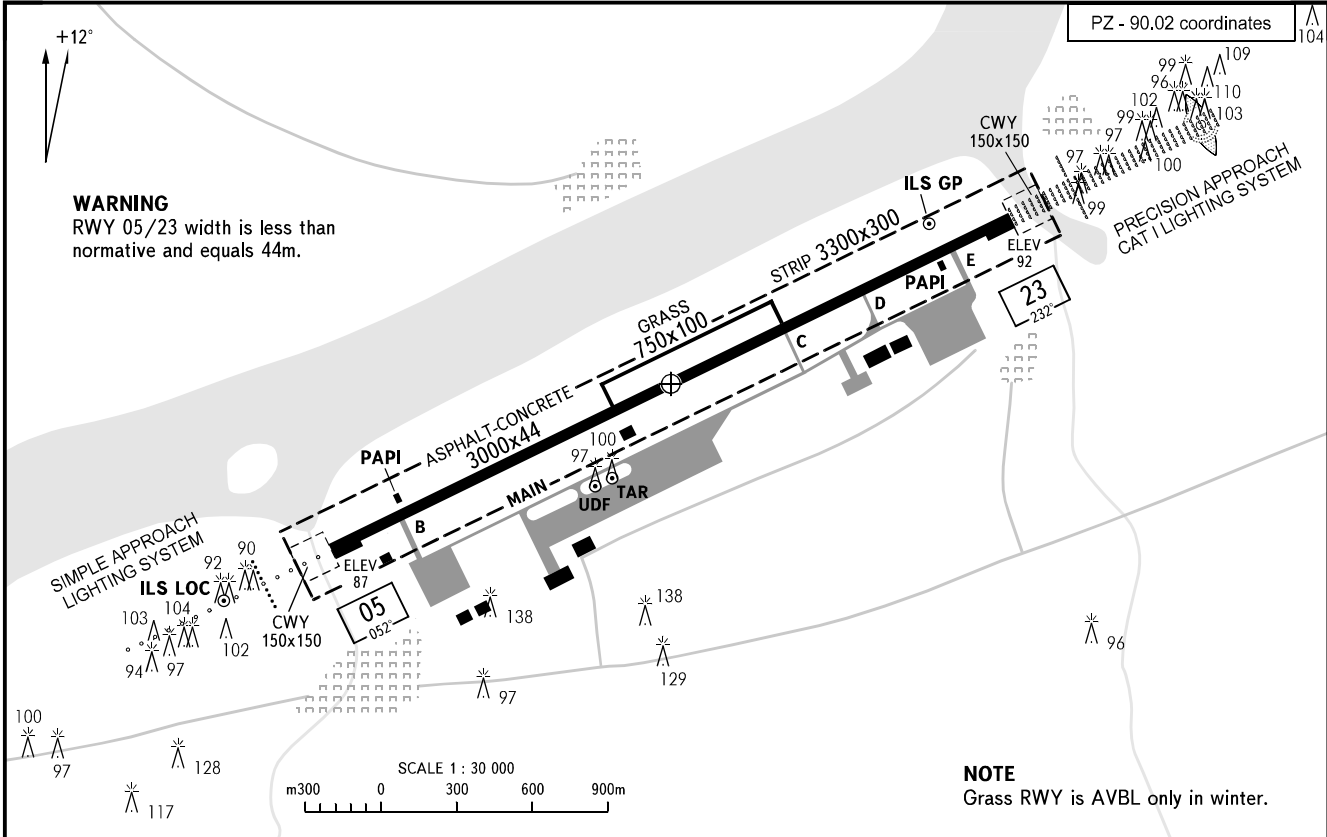
ARP
57°33'38"N
040°09'27"E

ELEV
93m

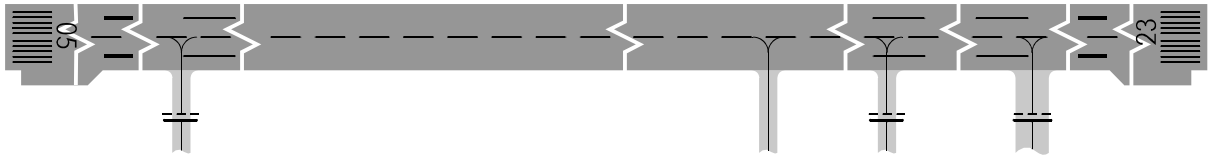
YAROSLAVL APPROACH 120.300

YAROSLAVL, RUSSIA

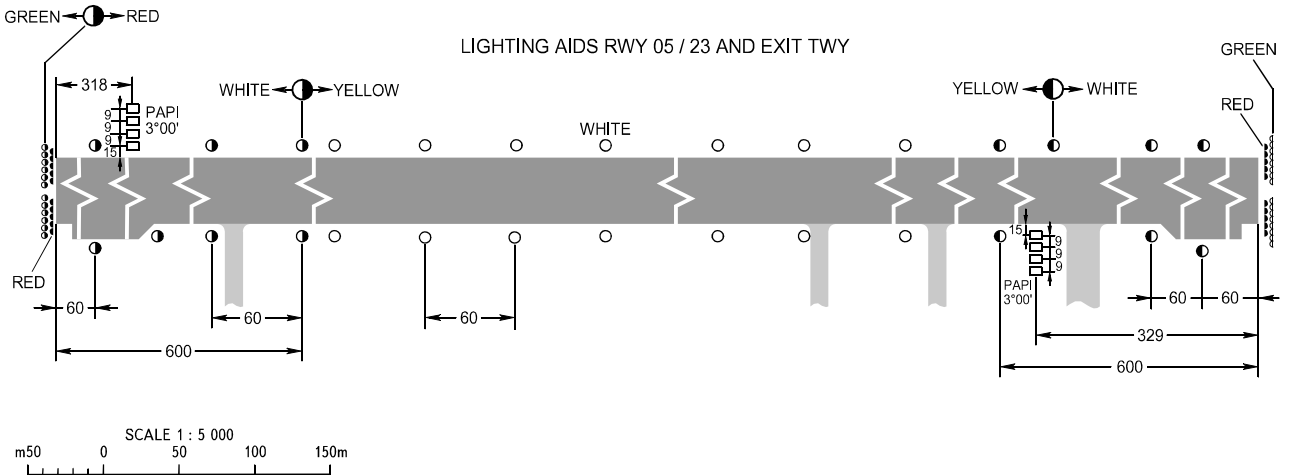
TUNOSHNA



MARKING AIDS RWY 05 / 23 AND EXIT TWY



LIGHTING AIDS RWY 05 / 23 AND EXIT TWY



RWY	DIRECTION (TRUE)	THR	BEARING STRENGTH
05	063°24'36"	57°33'16.44"N 040°08'05.63"E	Summer period (MAR 16 - NOV 30) PCN 44 /R/C/X/T
23	243°26'52"	57°33'59.96"N 040°10'47.54"E	Winter period (DEC 01 - MAR 15) PCN 51 /R/C/X/T

ELEVATIONS AND
DIMENSIONS IN METRES
BEARINGS ARE MAGNETIC

CHANGE: VAR, COORD, PCN, OBST, RWY HDG