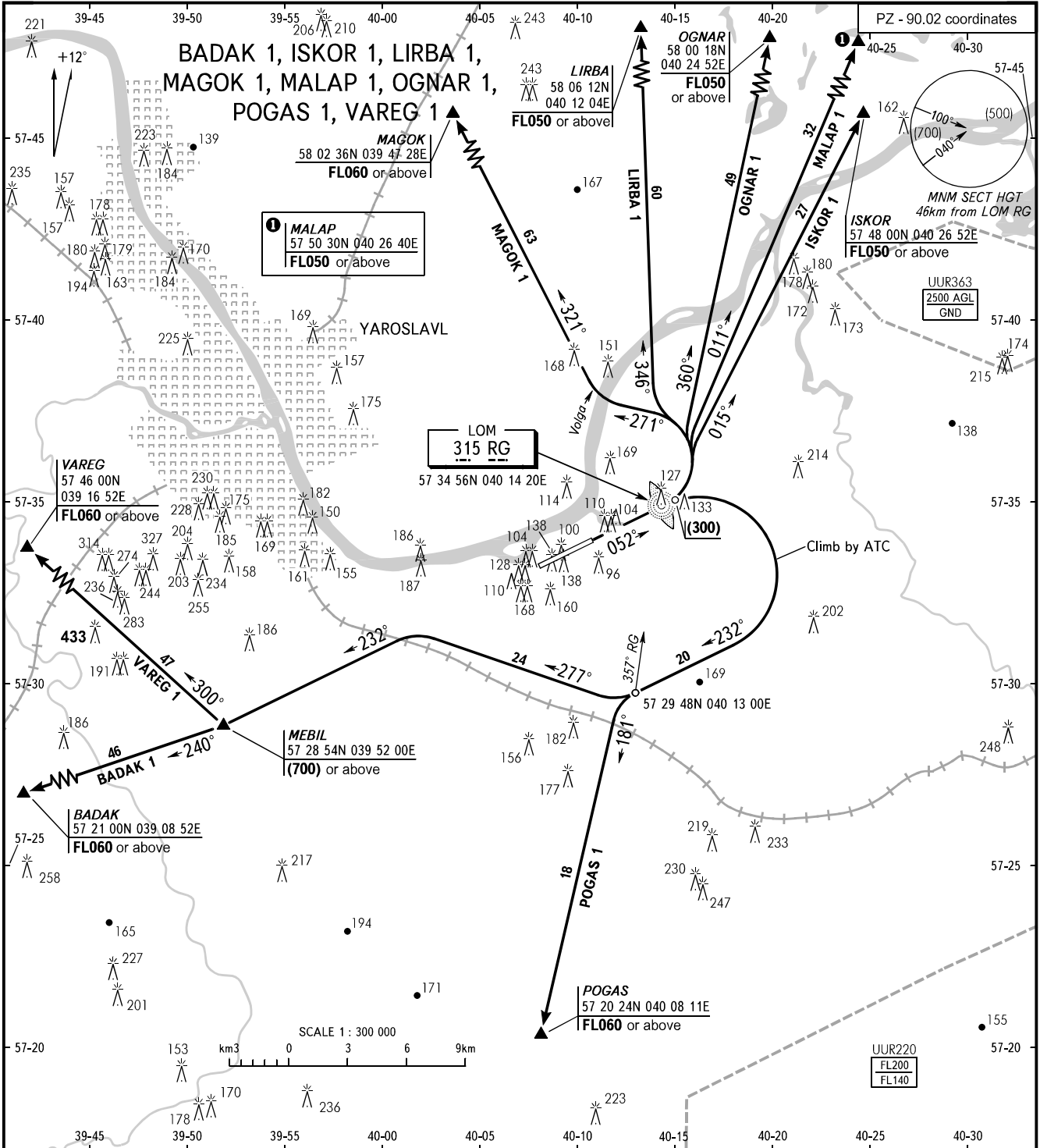


STANDARD DEPARTURE CHART
INSTRUMENT (SID) - ICAO

TRANSITION
HEIGHT : (700)

YAROSLAVL, RUSSIA
TUNOSHNA
RWY 05



GROUND SPEED		km/h	140	185	280	330	370	460	555
MNM rate of climb to FL050 for SID:	MALAP 1 (Grad 4%)	m/s	1.6	2.1	3.1	3.7	4.1	5.1	6.2
	ISKOR 1 (Grad 4.4%)	m/s	1.7	2.3	3.4	4.1	4.6	5.7	6.9
MNM rate of climb for all other SID (Grad 3.3%):		m/s	1.3	1.7	2.6	3.0	3.4	4.2	5.1

If unable to maintain the required climb gradient, the pilot should advise ATS unit about it and get other instructions.

YAROSLAVL APPROACH **120.300**
 MOSCOW CONTROL (above FL040-530): Sector North 1 **130.500**
 Sector Gorkiy 2 **135.500**
 Sector Gorkiy 5 **132.500**

WARNING:
 1. Flights over city at FL less than FL100 are prohibited.
 2. The initial turn after take-off on heading 052° MAG shall be carried out at height (300) not earlier than passing LOM RG.

BEARINGS AND TRACKS ARE MAGNETIC
 ALTITUDES, HEIGHTS AND ELEVATIONS ARE IN METRES
 DISTANCES ARE IN KILOMETRES

CHANGE: New chart