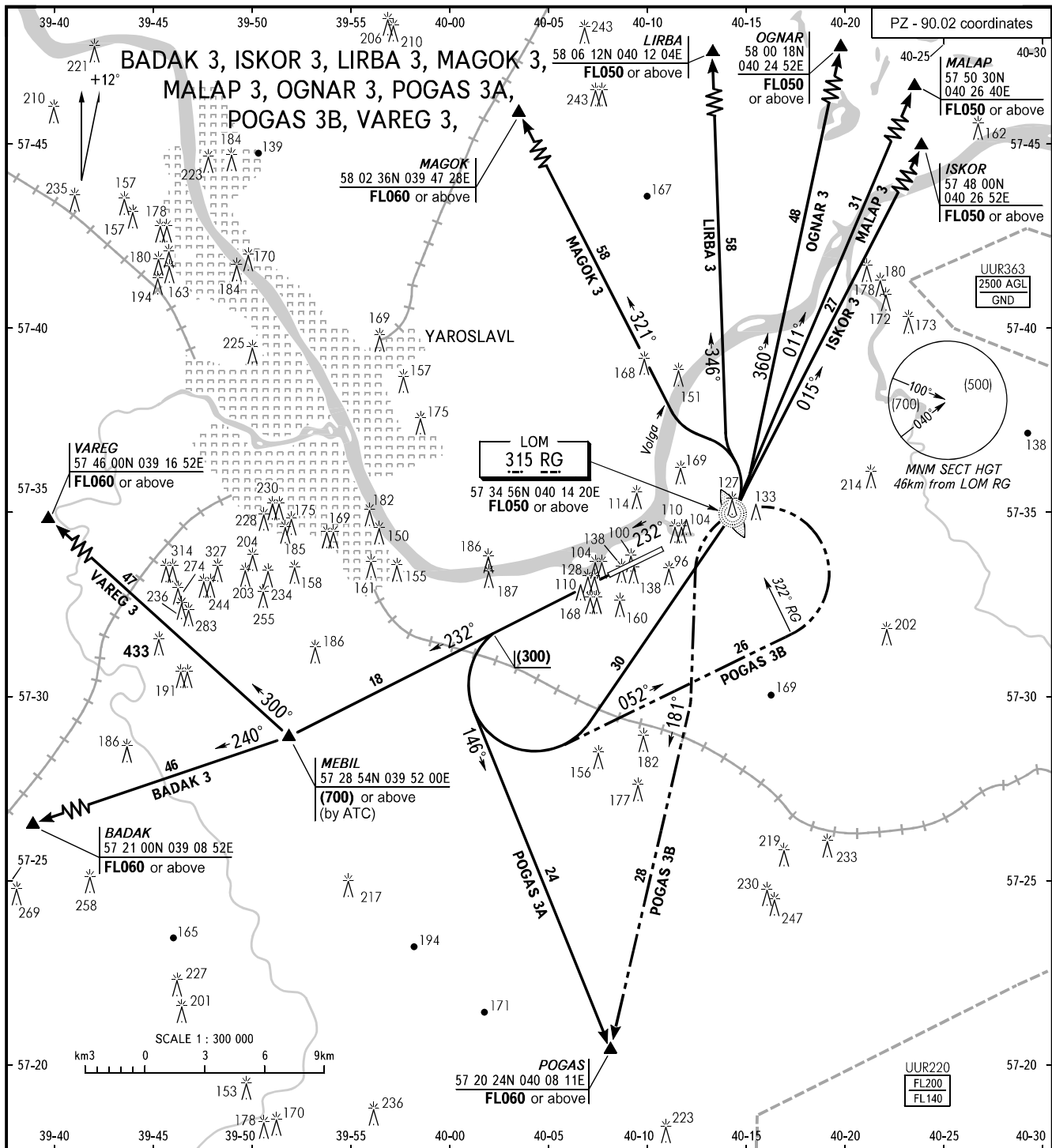


STANDARD DEPARTURE CHART
INSTRUMENT (SID) - ICAO

TRANSITION
HEIGHT : (700)

YAROSLAVL, RUSSIA
TUNOSHNA
RWY 23



GROUND SPEED	km/h	140	185	280	330	370	460	555	If unable to maintain the required climb gradient, the pilot should advise ATS unit about it and get other instructions.
MNM rate of climb to FL060 for SID POGAS 3A (Grad 6%):	m/s	2.3	3.1	4.7	5.6	6.3	7.8	9.4	
MNM rate of climb to (700) for SID VAREG 3, BADAK 3 (Grad 3.9%):	m/s	1.5	2.0	3.0	3.7	4.1	5.1	6.1	
MNM rate of climb for all other SID (Grad 3.3%):	m/s	1.3	1.7	2.6	3.0	3.4	4.2	5.1	

YAROSLAVL APPROACH **120.300**

MOSCOW CONTROL (above FL040-530):
Sector North 1 **130.500**
Sector Gorkiy 2 **135.500**
Sector Gorkiy 5 **132.500**

WARNING
Flights over city at FL less than FL100 are prohibited.

BEARINGS AND TRACKS ARE MAGNETIC
ALTITUDES, HEIGHTS AND ELEVATIONS ARE IN METRES
DISTANCES ARE IN KILOMETRES