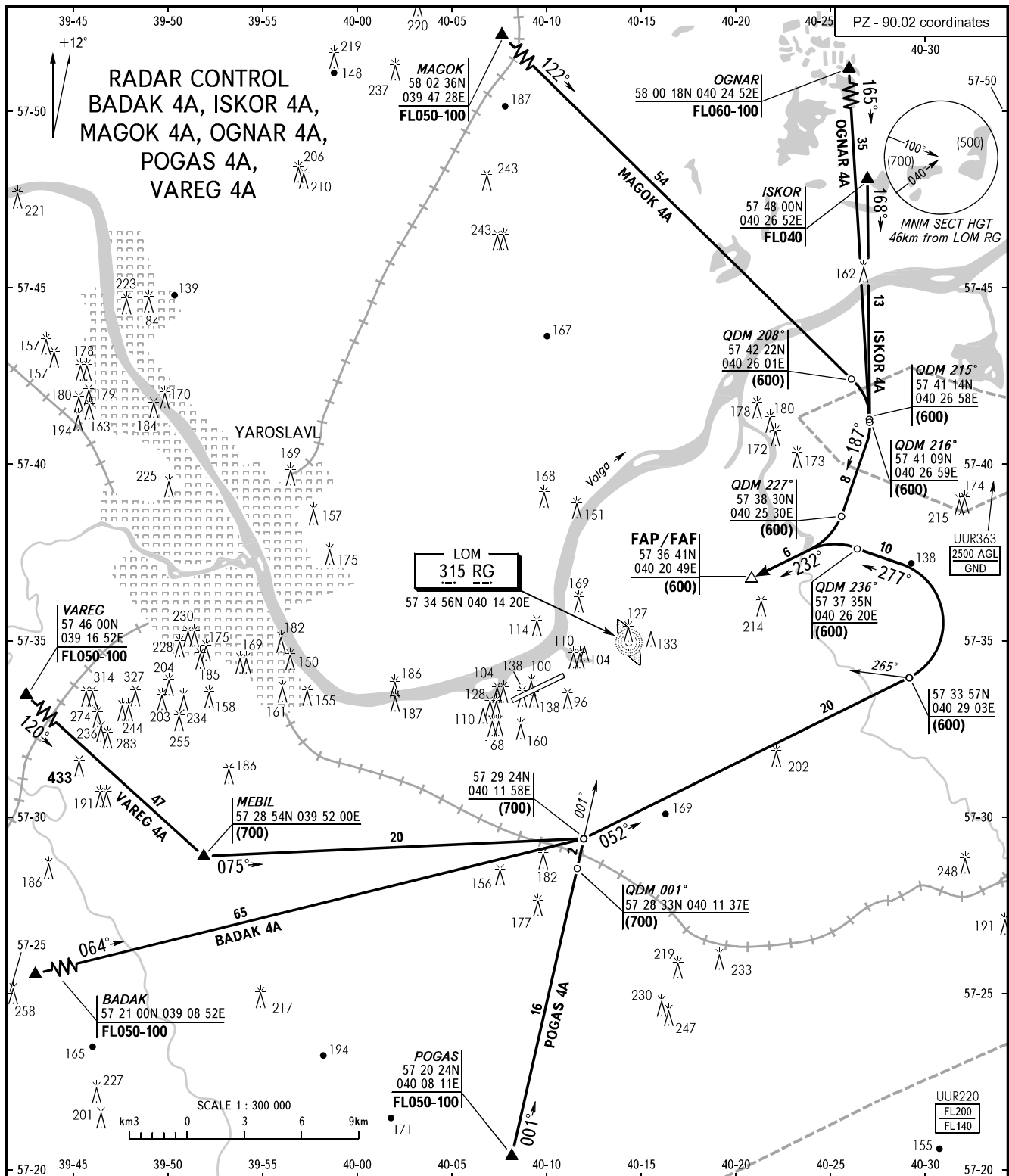


STANDARD ARRIVAL CHART
INSTRUMENT (STAR) - ICAO

TRANSITION
LEVEL: **1**

YAROSLAVL, RUSSIA
TUNOSHNA
RWY 23



YAROSLAVL APPROACH **120.300**

- 1** TRANSITION LEVEL:
- FL040 when atmospheric pressure is 751mm mercury column or above;
 - FL050 when atmospheric pressure is 724mm mercury column or above and less than 751mm mercury column;
 - FL060 when atmospheric pressure is less than 724mm mercury column.

BEARINGS AND TRACKS ARE MAGNETIC
ALTITUDES, HEIGHTS AND ELEVATIONS ARE IN METRES
DISTANCES ARE IN KILOMETRES