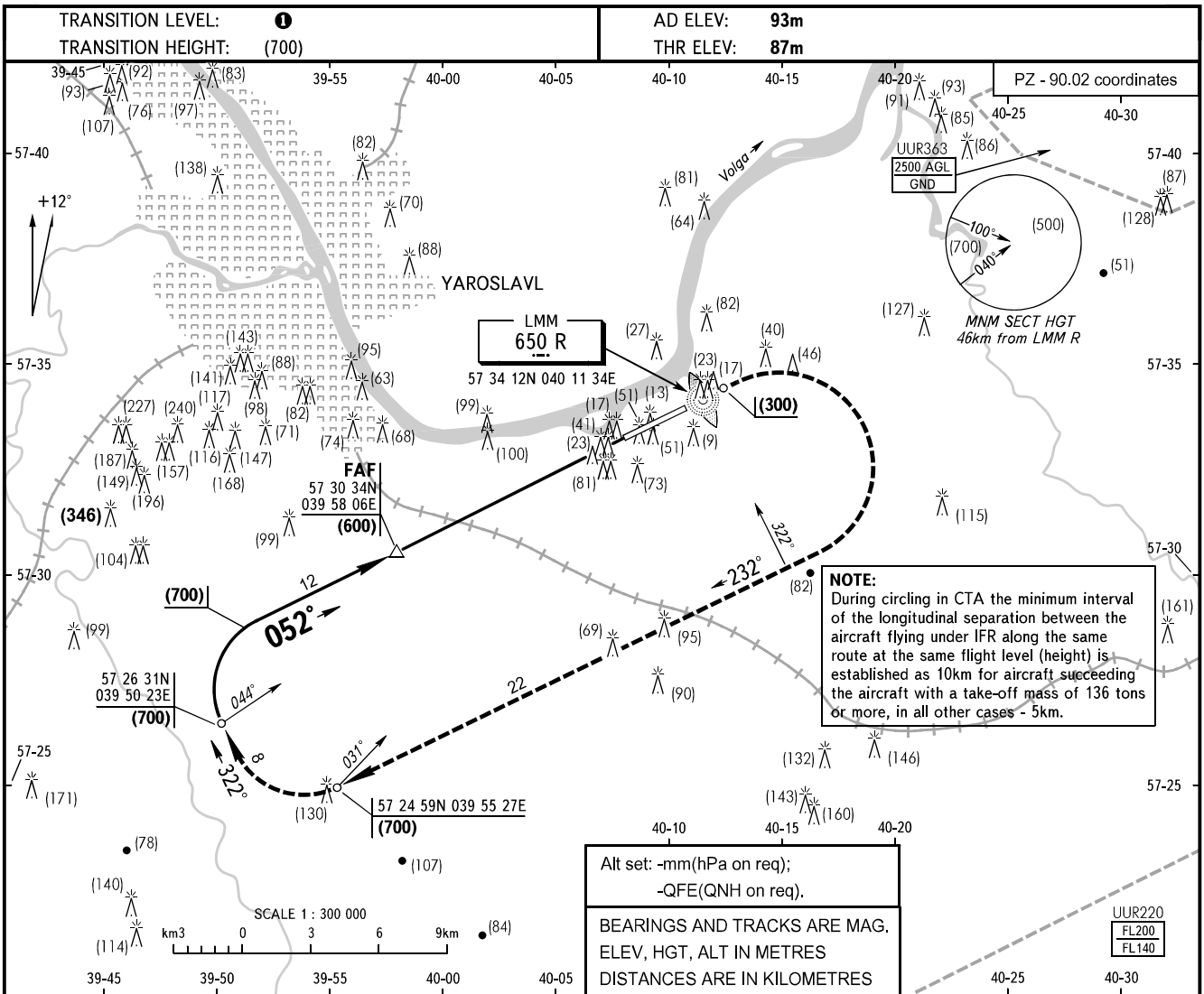


**INSTRUMENT
APPROACH
CHART - ICAO**

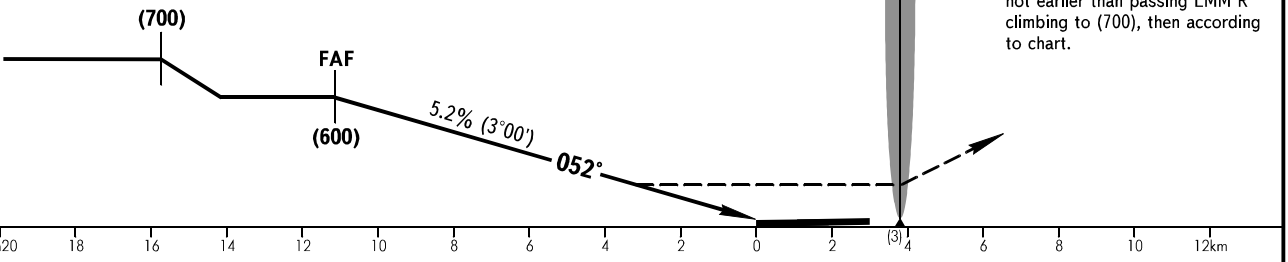
YAROSLAVL APPROACH **120.300**

**YAROSLAVL, RUSSIA
TUNOSHNA
NDB RWY 05**



FAF is fixed by TAR.
Descent for NDB
APCH by ATC.

MISSED APPROACH
Climb on track 052° to (300), then turn RIGHT on track 232° not earlier than passing LMM R climbing to (700), then according to chart.



		OCA/H	A	B	C	D
Straight-in	NDB	With FAF	255(168)	255(168)	255(168)	255(168)
		WO FAF	338(250)	338(250)	338(250)	338(250)
Approach						

1 **TRANSITION LEVEL:**

- FL040 when atmospheric pressure is 751mm mercury column or above;
- FL050 when atmospheric pressure is 724mm mercury column or above and less than 751mm mercury column;
- FL060 when atmospheric pressure is less than 724mm mercury column.

GROUND SPEED	km/h	150	180	210	240	270	300	330	360	390	420	450
RATE OF DESCENT	m/s	2.2	2.7	3.1	3.6	4.0	4.5	4.9	5.3	5.8	6.2	6.7

CHANGE: New chart