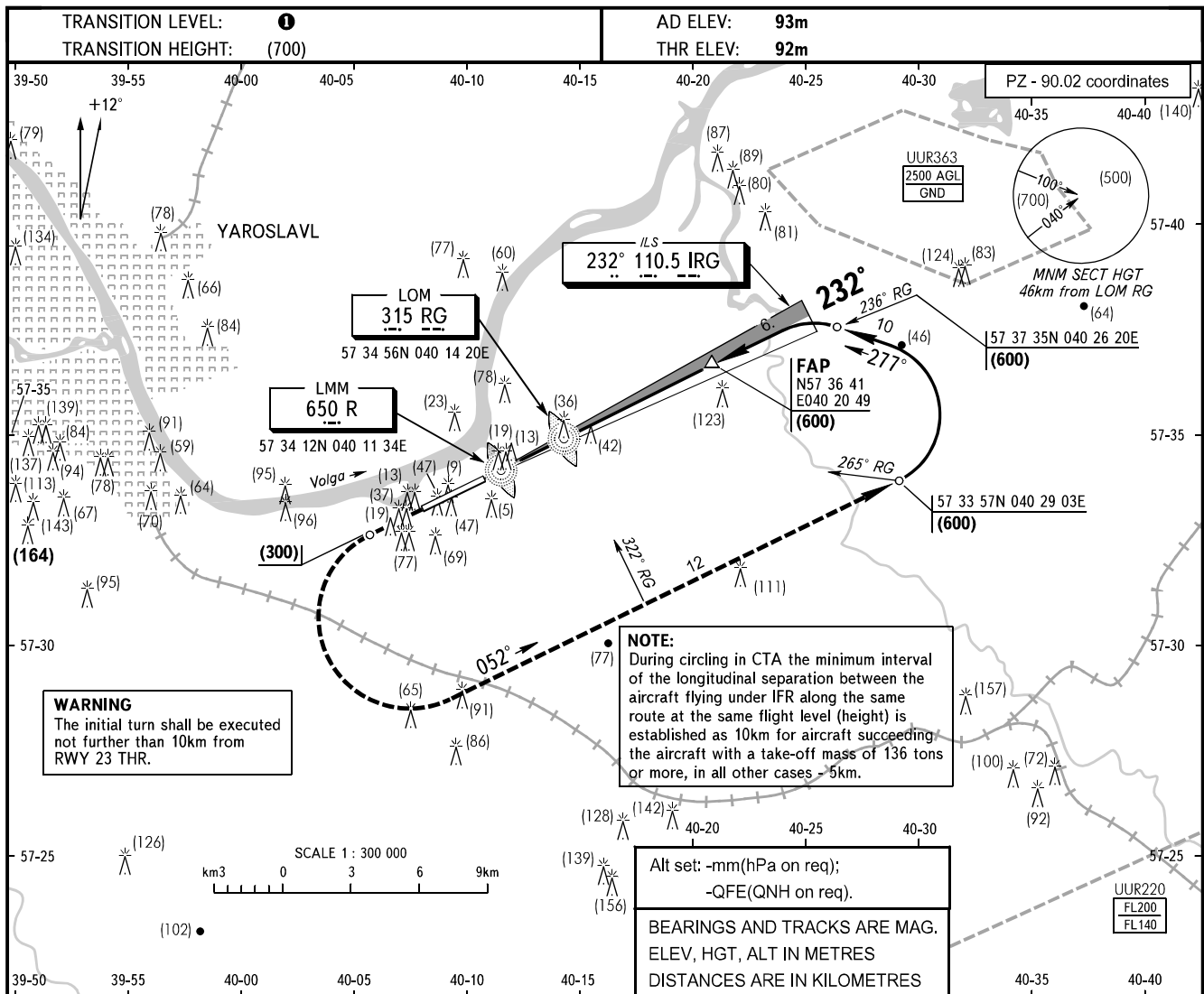


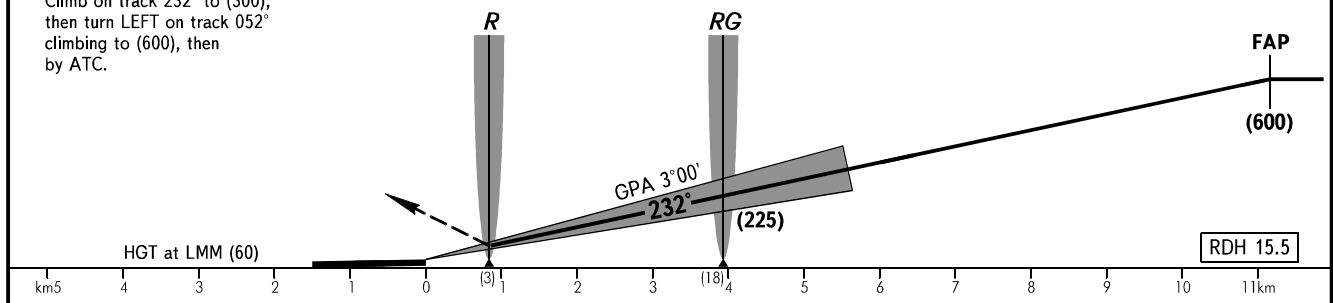
**INSTRUMENT
APPROACH
CHART - ICAO**

YAROSLAVL APPROACH 120.300

YAROSLAVL, RUSSIA
TUNOSHNA
ILS RWY 23



MISSED APPROACH
Climb on track 232° to (300), then turn LEFT on track 052° climbing to (600), then by ATC.



OCA/H		A	B	C	D
Straight-in	CAT I	139(47)	142(50)	147(55)	151(59)
	Approach				

① TRANSITION LEVEL:

- FL040 when atmospheric pressure is 751mm mercury column or above;
- FL050 when atmospheric pressure is 724mm mercury column or above and less than 751mm mercury column;
- FL060 when atmospheric pressure is less than 724mm mercury column.

GROUND SPEED	km/h	150	180	210	240	270	300	330	360	390	420	450
LOM-THR 3940m	min:sec	1.35	1.19	1.07	0.99	0.92	0.85	0.78	0.71	0.64	0.57	0.50
RATE OF DESCENT	m/s	2.2	2.7	3.1	3.6	4.0	4.5	4.9	5.3	5.8	6.2	6.7