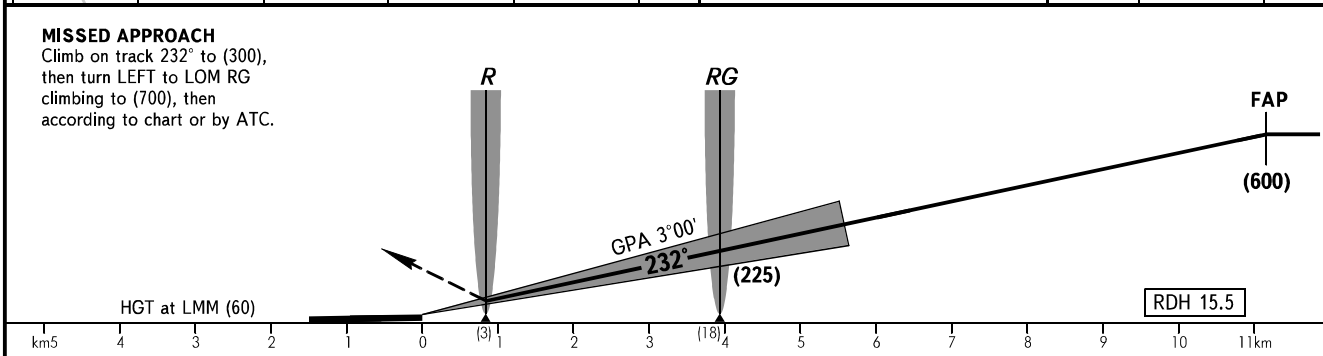
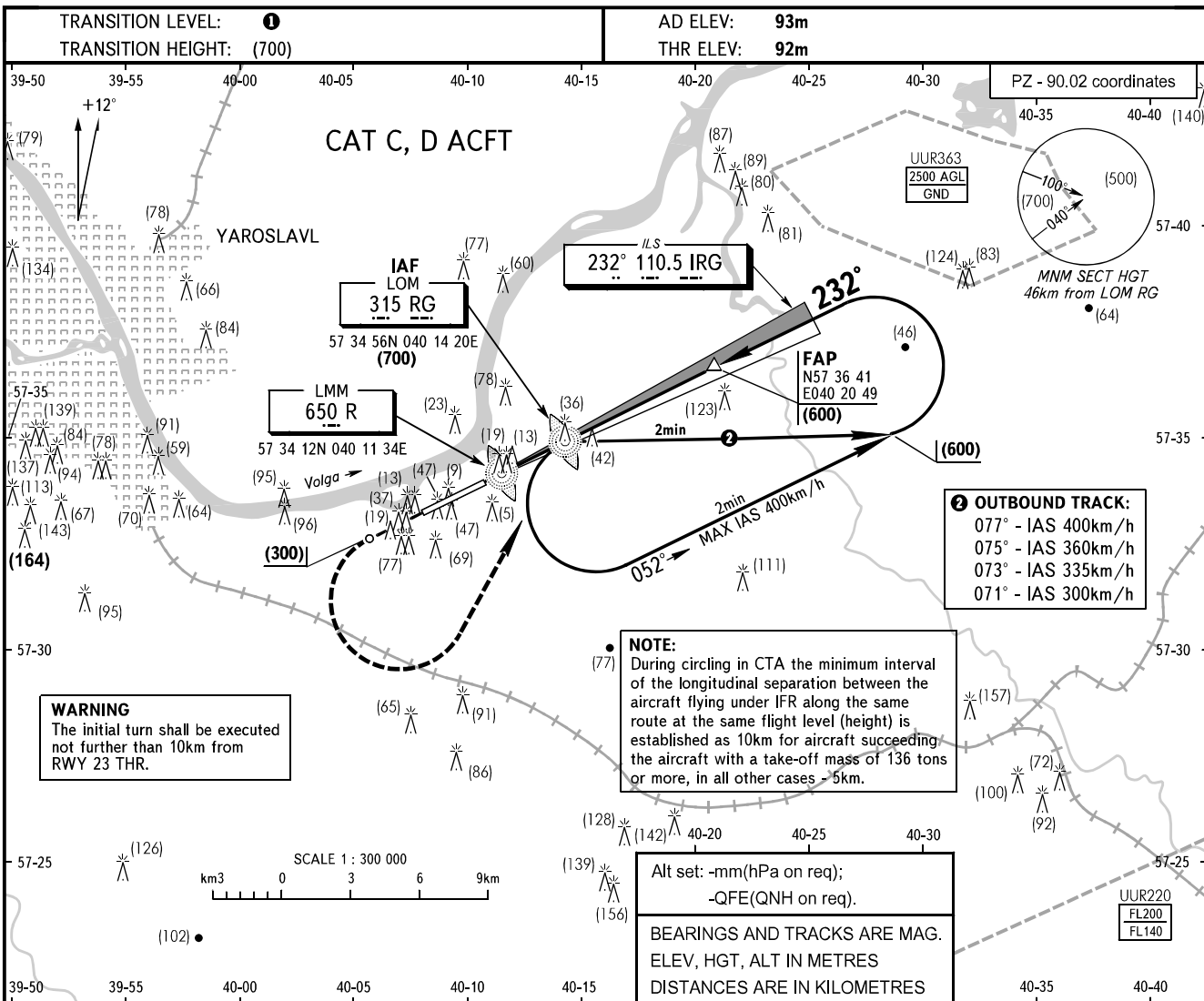


**INSTRUMENT  
APPROACH  
CHART - ICAO**

YAROSLAVL APPROACH **120.300**

**YAROSLAVL, RUSSIA  
TUNOSHNA  
ILS RWY 23**



OCA/H		A	B	C	D	<b>① TRANSITION LEVEL:</b> - FL040 when atmospheric pressure is 751mm mercury column or above; - FL050 when atmospheric pressure is 724mm mercury column or above and less than 751mm mercury column; - FL060 when atmospheric pressure is less than 724mm mercury column.									
CAT I				147(55)	151(59)										
Straight-in	Approach														
GROUND SPEED	km/h		150	180	210	240	270	300	330	360	390	420	450		
LOM-THR 3940m	min:sec		1.35	1.19	1.07	0.59	0.52	0.47	0.43	0.39	0.36	0.34	0.32		
RATE OF DESCENT	m/s		2.2	2.7	3.1	3.6	4.0	4.5	4.9	5.3	5.8	6.2	6.7		

CHANGE: New chart