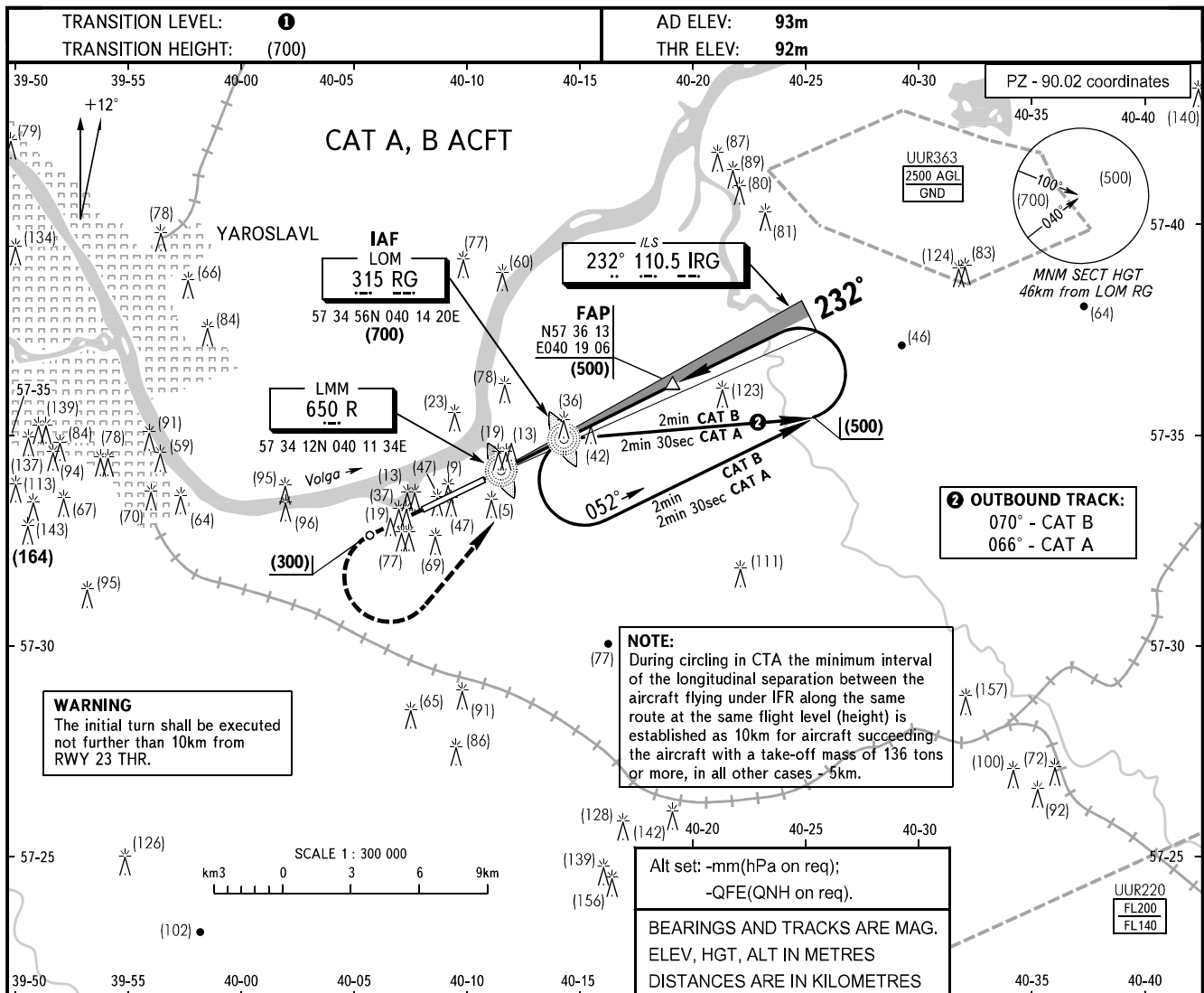


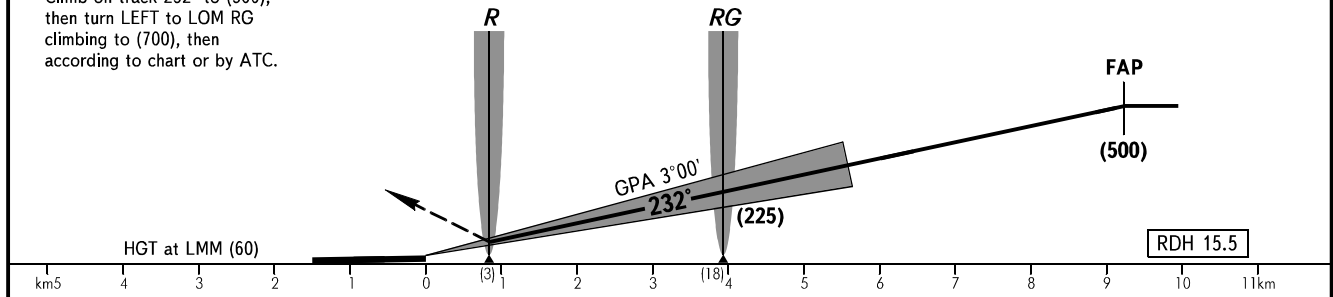
**INSTRUMENT
APPROACH
CHART - ICAO**

YAROSLAVL APPROACH **120.300**

YAROSLAVL, RUSSIA
TUNOSHNA
ILS RWY 23



MISSED APPROACH
Climb on track 232° to (300), then turn LEFT to LOM RG climbing to (700), then according to chart or by ATC.



OCA/H		A	B	C	D								
Straight-in	CAT I	139(47)	142(50)										
	Approach												
GROUND SPEED		km/h	150	180	210	240	270	300	330	360	390	420	450
LOM-THR 3940m		min:sec	1.35	1.19	1.07	0.59	0.52	0.47	0.43	0.39	0.36	0.34	0.32
RATE OF DESCENT		m/s	2.2	2.7	3.1	3.6	4.0	4.5	4.9	5.3	5.8	6.2	6.7

① TRANSITION LEVEL:
- FL040 when atmospheric pressure is 751mm mercury column or above;
- FL050 when atmospheric pressure is 724mm mercury column or above and less than 751mm mercury column;
- FL060 when atmospheric pressure is less than 724mm mercury column.