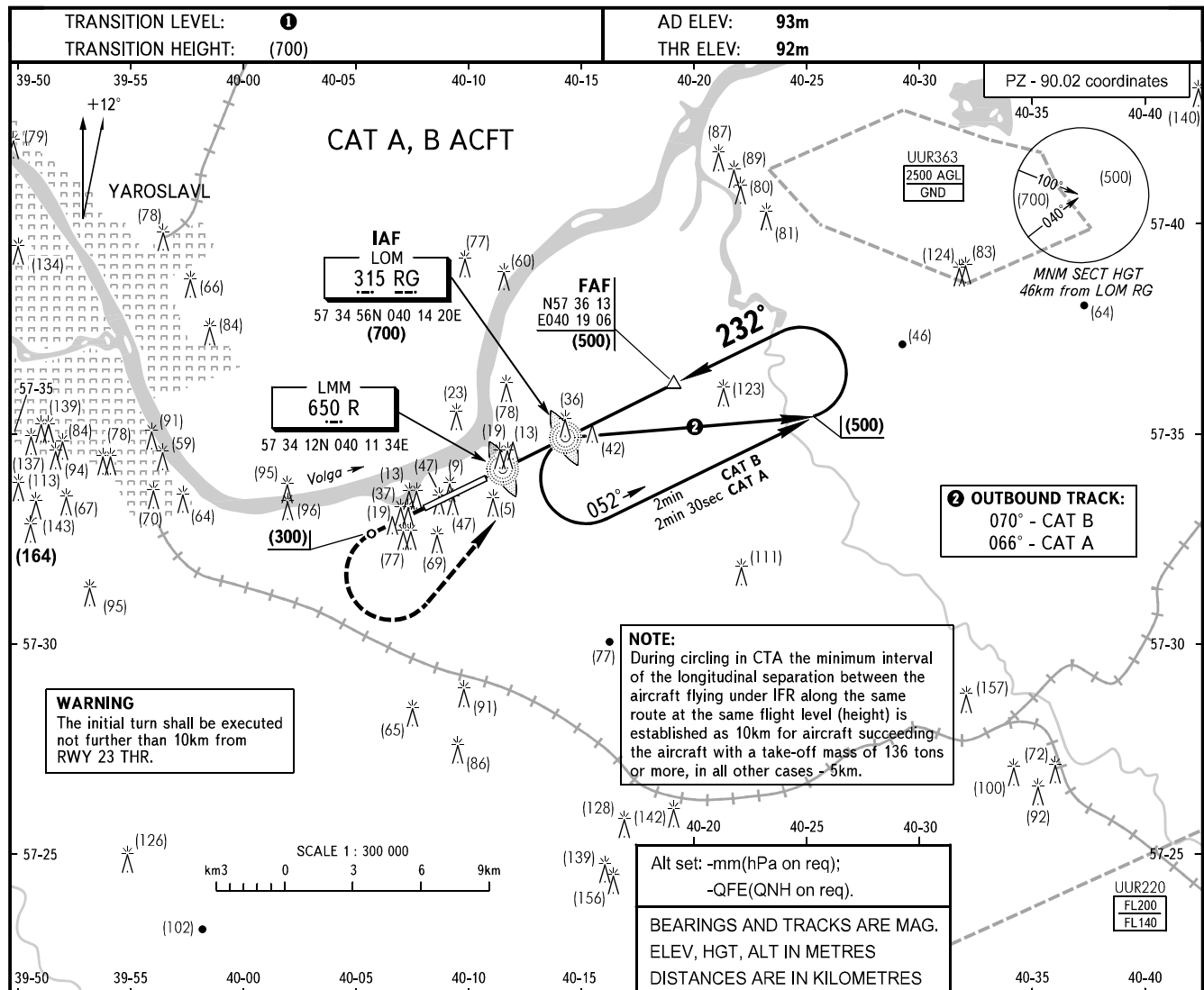


**INSTRUMENT
APPROACH
CHART - ICAO**

YAROSLAVL APPROACH **120.300**

YAROSLAVL, RUSSIA
TUNOSHNA
2 NDB, NDB RWY 23



MISSED APPROACH
Climb on track 232° to (300), then turn LEFT to LOM RG climbing to (700), then according to chart or by ATC.

MAPt NDB RG **MAPt 2 NDB, NDB R**

FAF is fixed by TAR. Descent for NDB APCH by ATC.

HGT at LMM (60)

5.2% (3'00')

232°

(225)

(18)

(3)

(500)

OCA/H		A	B	C	D
Straight-in	2 NDB	With FAF 190(99)	191(100)		
		WO FAF 365(274)	365(274)		
Approach	NDB R	With FAF 208(117)	208(117)		
		WO FAF 305(214)	305(214)		
	NDB RG	With FAF, WO FAF 214(123)	228(137)		

① **TRANSITION LEVEL:**
- FL040 when atmospheric pressure is 751mm mercury column or above;
- FL050 when atmospheric pressure is 724mm mercury column or above and less than 751mm mercury column;
- FL060 when atmospheric pressure is less than 724mm mercury column.

GROUND SPEED	km/h	150	180	210	240	270	300	330	360	390	420	450
LOM-MAPt NDB RG 3930m	min:sec	1.34	1.19	1.07	1.00	0.52	0.47	0.43	0.39	0.36	0.34	0.32
RATE OF DESCENT	m/s	2.2	2.7	3.1	3.6	4.0	4.5	4.9	5.3	5.8	6.2	6.7

CHANGE: New chart