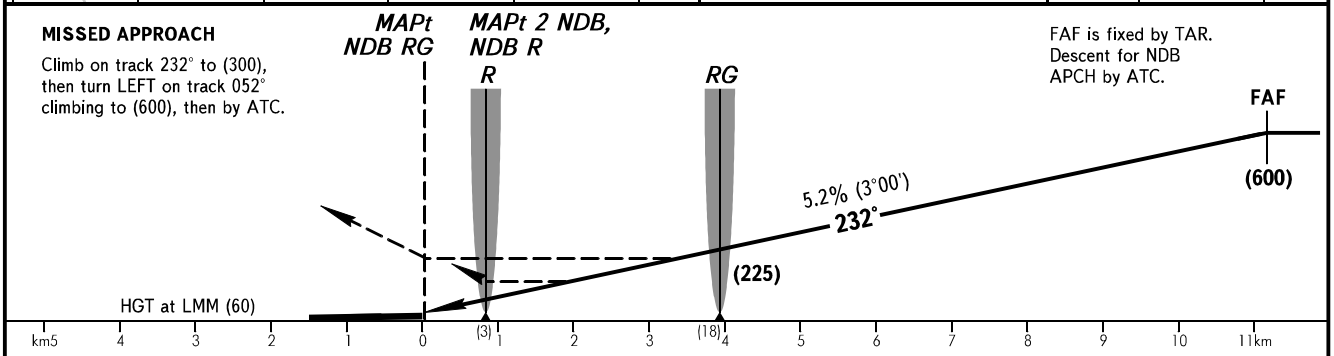
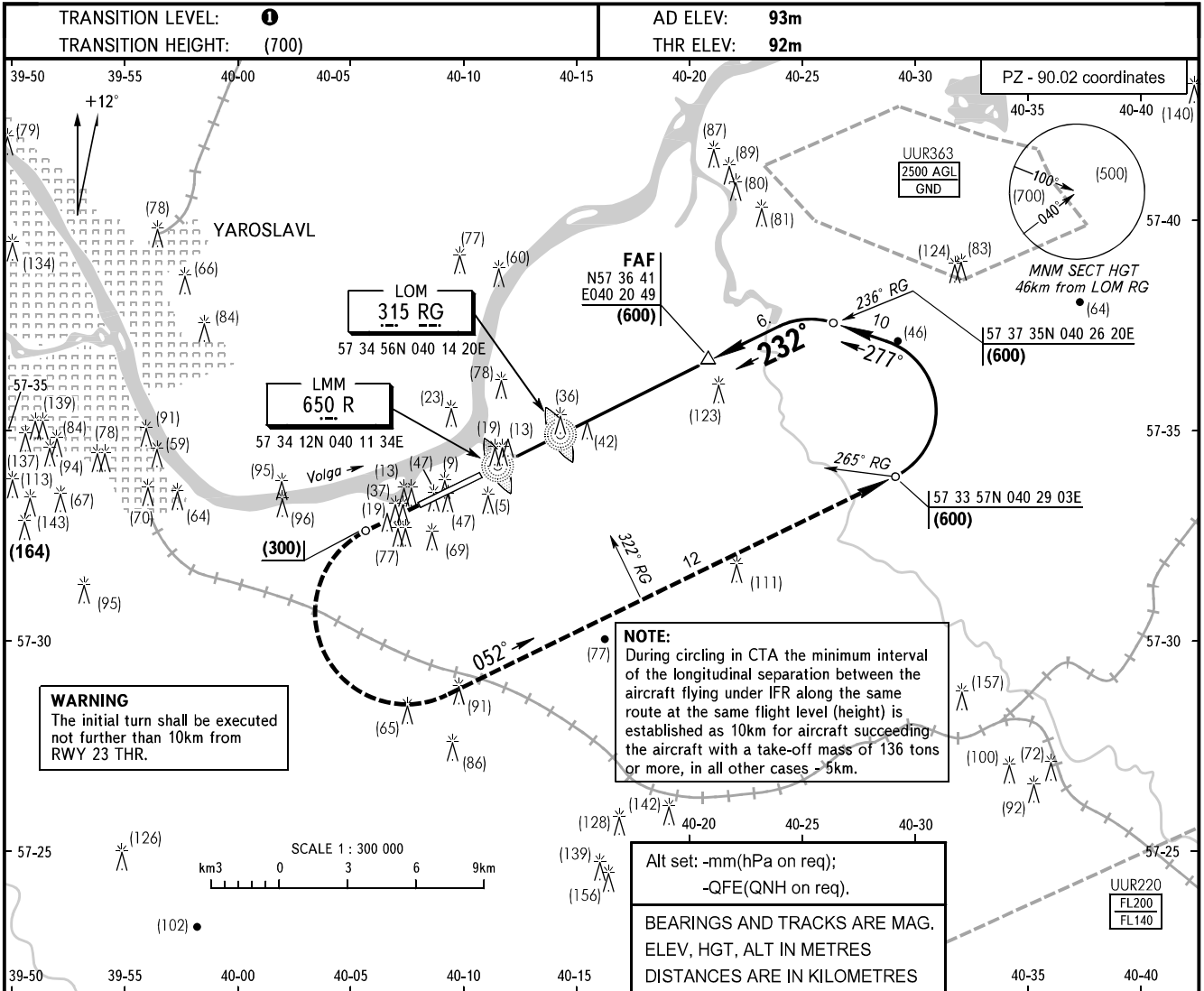


**INSTRUMENT
APPROACH
CHART - ICAO**

YAROSLAVL APPROACH **120.300**

**YAROSLAVL, RUSSIA
TUNOSHNA
2 NDB, NDB RWY 23**



		OCA/H	A	B	C	D	① TRANSITION LEVEL:							
Straight-in	2 NDB with FAF		190(99)	191(100)	196(105)	196(105)	- FL040 when atmospheric pressure is 751mm mercury column or above;							
	NDB R with FAF		208(117)	208(117)	208(117)	208(117)	- FL050 when atmospheric pressure is 724mm mercury column or above and less than 751mm mercury column;							
Approach	NDB RG with FAF		214(123)	228(137)	228(137)	243(152)	- FL060 when atmospheric pressure is less than 724mm mercury column.							
GROUND SPEED		km/h		150	180	210	240	270	300	330	360	390	420	450
LOM-MAPt NDB RG 3930m		min:sec		1.34	1.19	1.07	1.00	0.52	0.47	0.43	0.39	0.36	0.34	0.32
RATE OF DESCENT		m/s		2.2	2.7	3.1	3.6	4.0	4.5	4.9	5.3	5.8	6.2	6.7

CHANGE: New chart