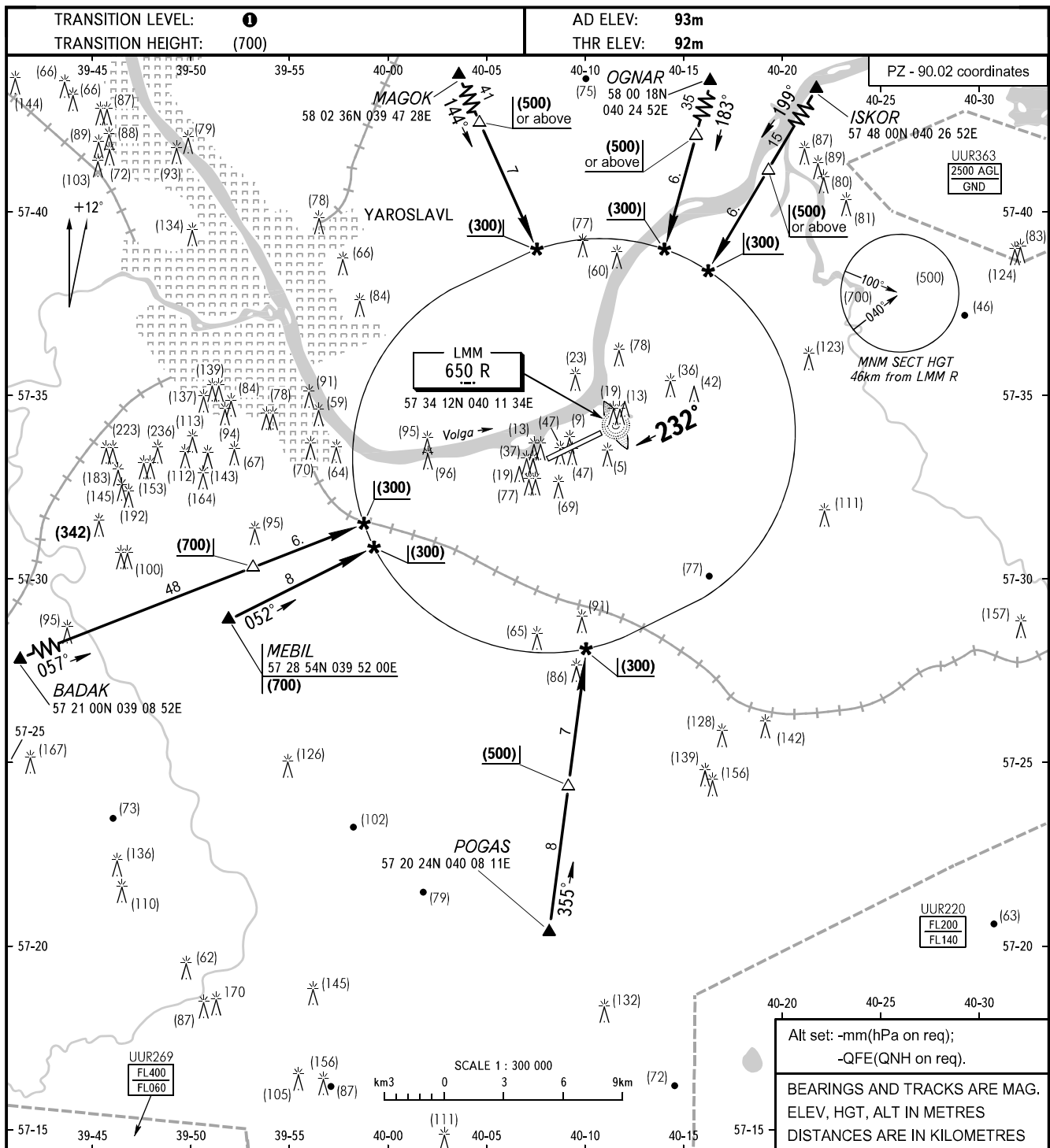


VISUAL
APPROACH
CHART - ICAO

YAROSLAVL APPROACH 120.300

YAROSLAVL, RUSSIA
TUNOSHNA
CIRCLING RWY 23



- NOTE:**
- CAT A, B and C ACFT shall carry out 180-degree RIGHT turn for landing without descending.
 - Visual APCH from MAGOK, OGNAR, ISKOR to RWY 23 may be carried out without flying along visual circuit under visibility 6000m or more and in the presence of visual reference to the aerodrome.

- WARNING:**
- The radius of visual manoeuvring area is 9790m for all ACFT categories.
 - Visual approach is prohibited when radar control is not AVBL.
 - The point of commencement of visual approach is within the visual manoeuvring area.

- ① **TRANSITION LEVEL:**
- FL040 when atmospheric pressure is 751mm mercury column or above;
 - FL050 when atmospheric pressure is 724mm mercury column or above and less than 751mm mercury column;
 - FL060 when atmospheric pressure is less than 724mm mercury column.

| ACFT CAT | | A | B | C | D | D-wide-body |
|----------------|---------------|------|------|------|------|-------------|
| MET conditions | MDH, m | 190 | 190 | 220 | 220 | 300 |
| | Cloud base, m | 350 | 350 | 400 | 400 | 400 |
| | Visibility, m | 3000 | 3000 | 3000 | 4000 | 5000 |