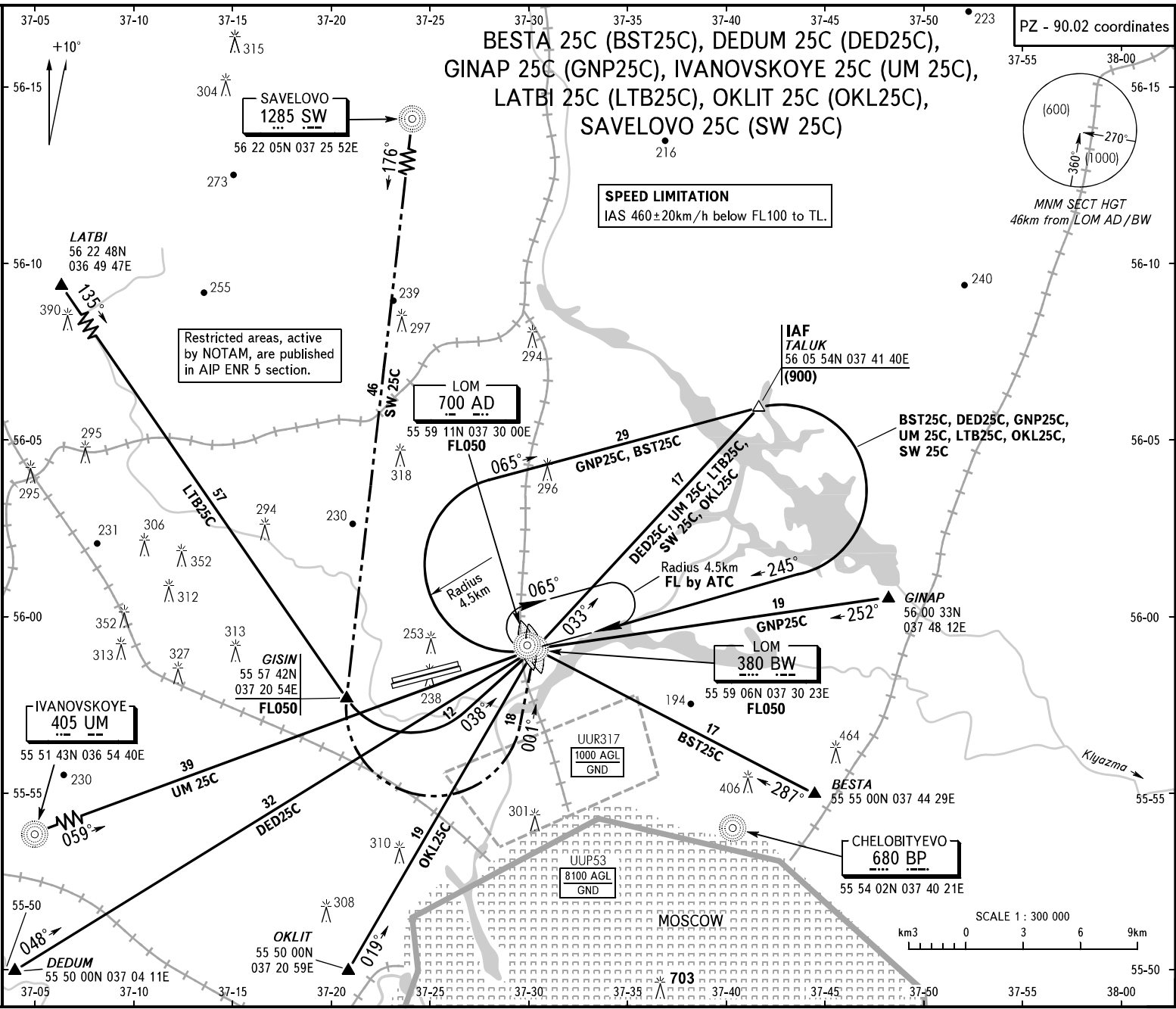


STANDARD ARRIVAL CHART
INSTRUMENT (STAR) - ICAO

TRANSITION
LEVEL: By ATC

MOSCOW, RUSSIA
SHEREMETYEVO
RWY 25L/25R



MOSCOW APPROACH
SHEREMETYEVO RADAR
See UUEE-56
118.100

BEARINGS AND TRACKS ARE MAGNETIC
ALTITUDES, HEIGHTS AND ELEVATIONS ARE IN METRES
DISTANCES ARE IN KILOMETRES

WARNING
All crews shall execute noise abatement procedures as in accordance with ICAO Annex 16 and DOC 8168.