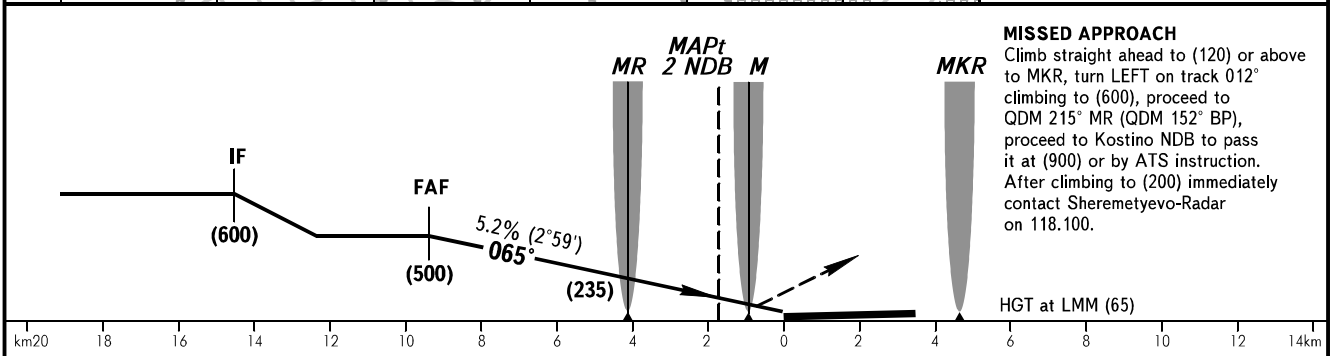
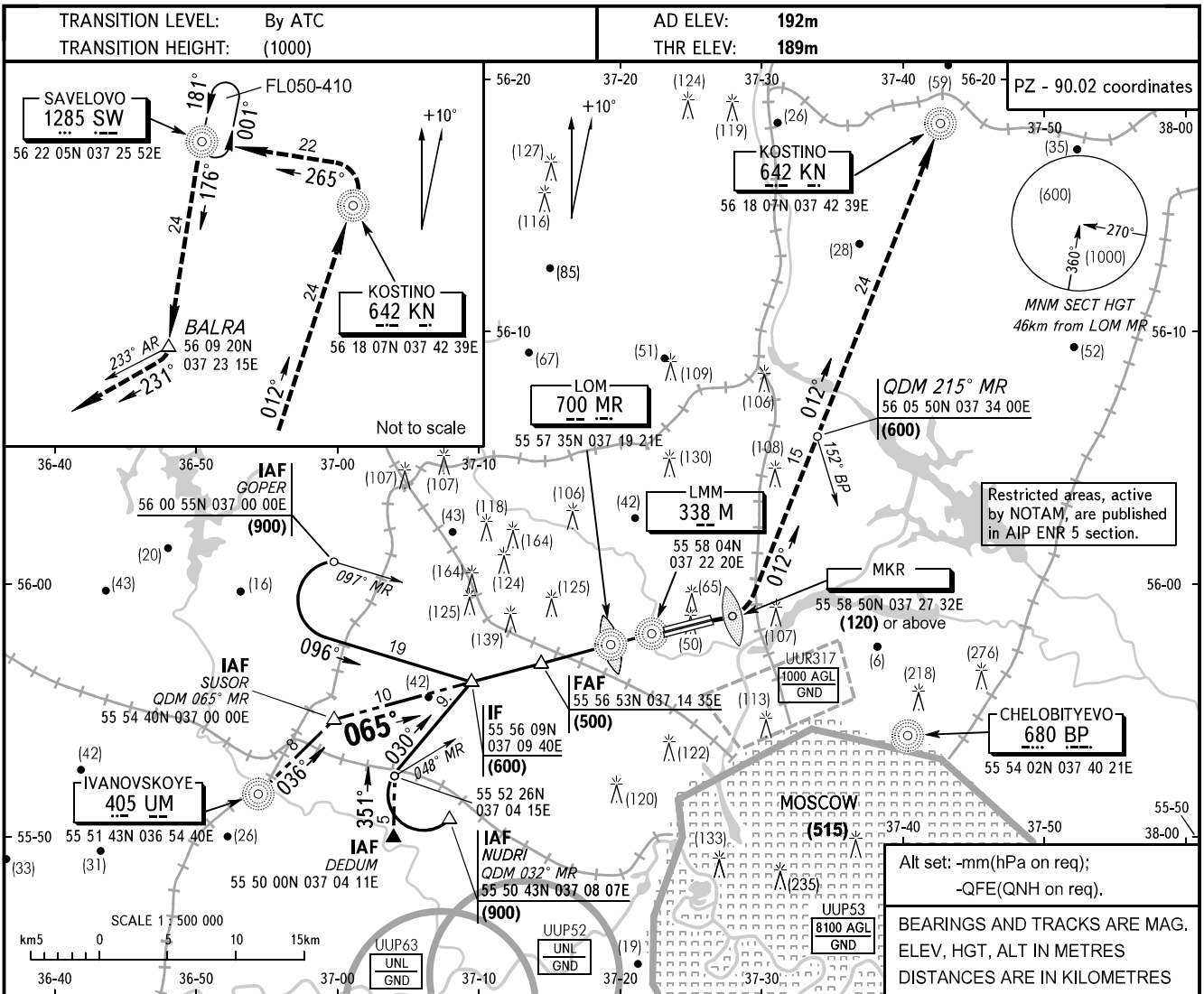


**INSTRUMENT  
APPROACH  
CHART - ICAO**

MOSCOW	APPROACH 2	127.200
SHEREMETYEVO RADAR		118.100
TOWER	RWY 07R/25L	120.700
	RWY 07L/25R	131.500

**MOSCOW, RUSSIA  
SHEREMETYEVO  
2 NDB, NDB RWY 07L**



**MISSED APPROACH**  
Climb straight ahead to (120) or above to MKR, turn LEFT on track 012° climbing to (600), proceed to QDM 215° MR (QDM 152° BP), proceed to Kostino NDB to pass it at (900) or by ATS instruction. After climbing to (200) immediately contact Sheremetyevo-Radar on 118.100.

OCA/H		A	B	C	D	
Straight-in Approach	2 NDB	With FAF	295 (106)	295 (106)	295 (106)	295 (106)
		WO FAF	424 (235)	424 (235)	424 (235)	424 (235)
	NDB	With FAF	299 (110)	299 (110)	299 (110)	299 (110)
		WO FAF	476 (287)	476 (287)	476 (287)	476 (287)

GROUND SPEED	km/h	150	180	210	240	270	300	330	360	390	420	450
LOM-THR 4088m	min:sec	1.38	1.22	1.10	1.01	0.55	0.49	0.45	0.41	0.38	0.35	0.33
RATE OF DESCENT	m/s	2.2	2.6	3.1	3.5	3.9	4.3	4.8	5.2	5.6	6.0	6.5

CHANGE: BRG