

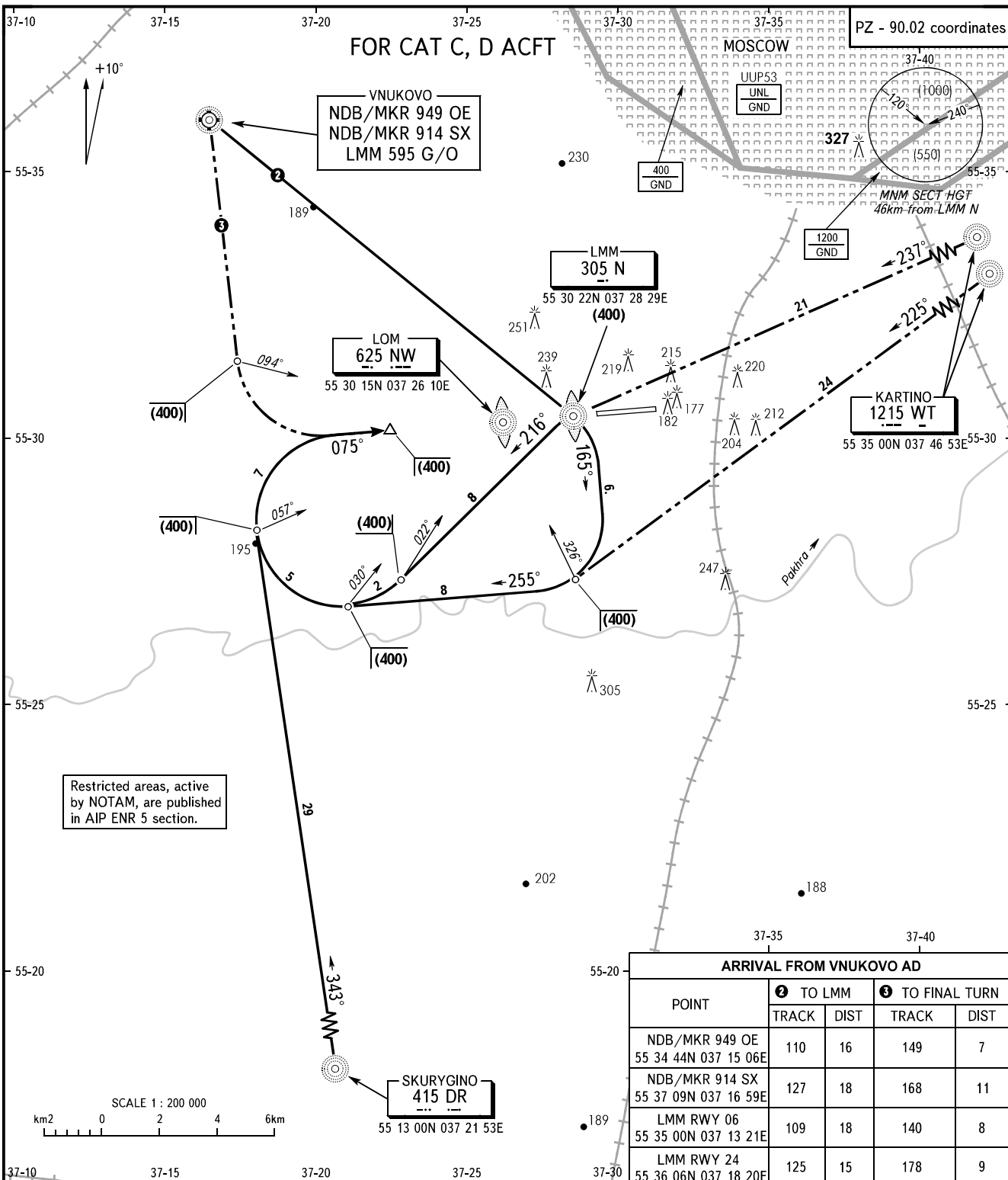
STANDARD ARRIVAL CHART
INSTRUMENT (STAR) - ICAO

OSTAFYEVO, RUSSIA
OSTAFYEVO
RWY 08

TRANSITION
LEVEL: 1

FOR CAT C, D ACFT

PZ - 90.02 coordinates



ARRIVAL FROM VNUKOVO AD

POINT	1 TO LMM		2 TO FINAL TURN	
	TRACK	DIST	TRACK	DIST
NDB/MKR 949 OE 55 34 44N 037 15 06E	110	16	149	7
NDB/MKR 914 SX 55 37 09N 037 16 59E	127	18	168	11
LMM RWY 06 55 35 00N 037 13 21E	109	18	140	8
LMM RWY 24 55 36 06N 037 18 20E	125	15	178	9

MOSCOW	APPROACH	See Moscow Area Chart
DOMODEDOVO	RADAR	127.7
VNUKOVO	RADAR	126.0
OSTAFYEVO	TOWER	119.2

- WARNING:**
- 1 By ATIS of VNUKOVO or DOMODEDOVO AD.
 - 2 Approach-to-land shall be carried out under radar control and ATC direction only.
 - 3 Arrival route NDB FE - NDB AO is U/S.

BEARINGS AND TRACKS ARE MAGNETIC
ALTITUDES, HEIGHTS AND ELEVATIONS ARE IN METRES
DISTANCES ARE IN KILOMETRES

CHANGE: COORD, MNM SEC HGT