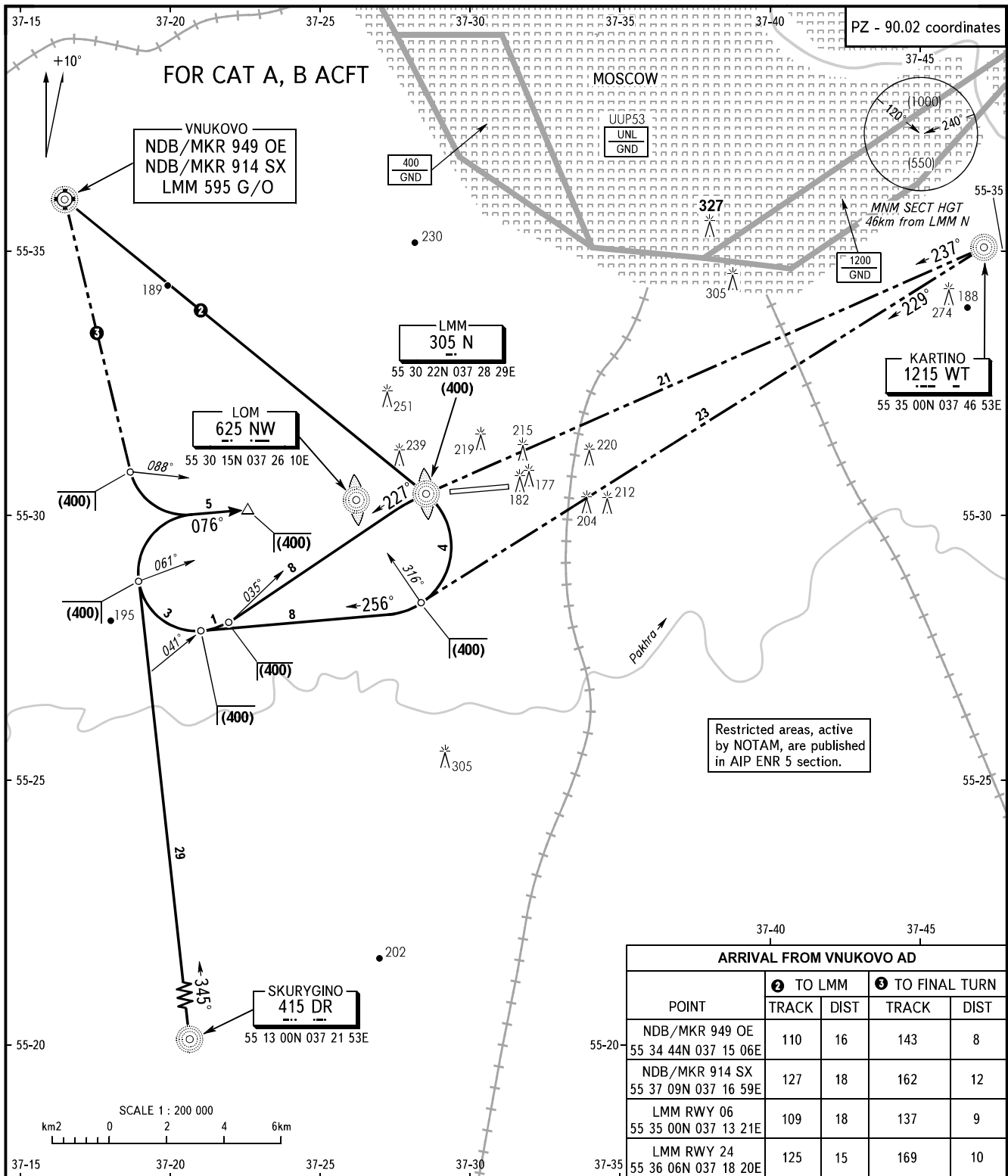


OSTAFYEVO, RUSSIA
OSTAFYEVO
RWY 08

STANDARD ARRIVAL CHART
INSTRUMENT (STAR) - ICAO

TRANSITION
LEVEL: **1**



MOSCOW APPROACH See Moscow Area Chart
DOMODEDOVO RADAR 127.7
VNUKOVO RADAR 126.0
OSTAFYEVO TOWER 119.2

WARNING:

- ① By ATIS of VNUKOVO or DOMODEDOVO AD.
- Approach-to-land shall be carried out under radar control and ATC direction only.
- Arrival route NDB FE - NDB AO is U/S.

BEARINGS AND TRACKS ARE MAGNETIC
ALTITUDES, HEIGHTS AND ELEVATIONS ARE IN METRES
DISTANCES ARE IN KILOMETRES