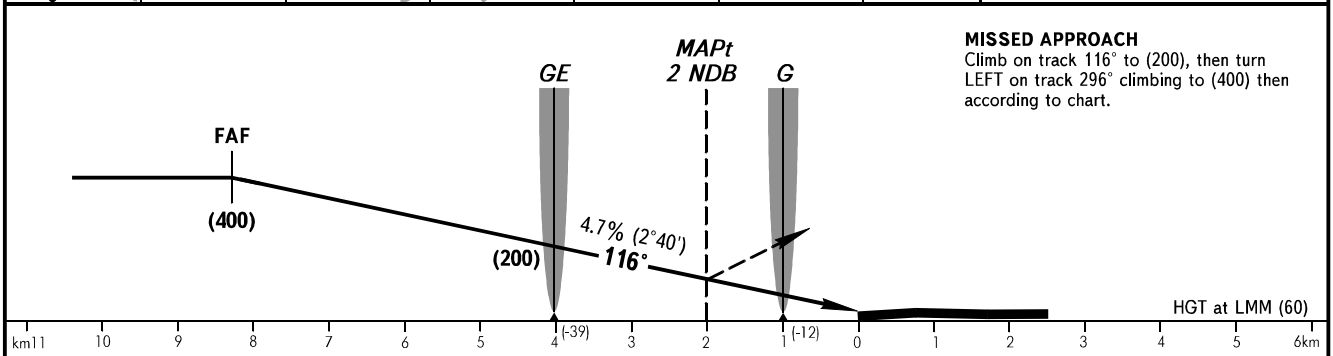
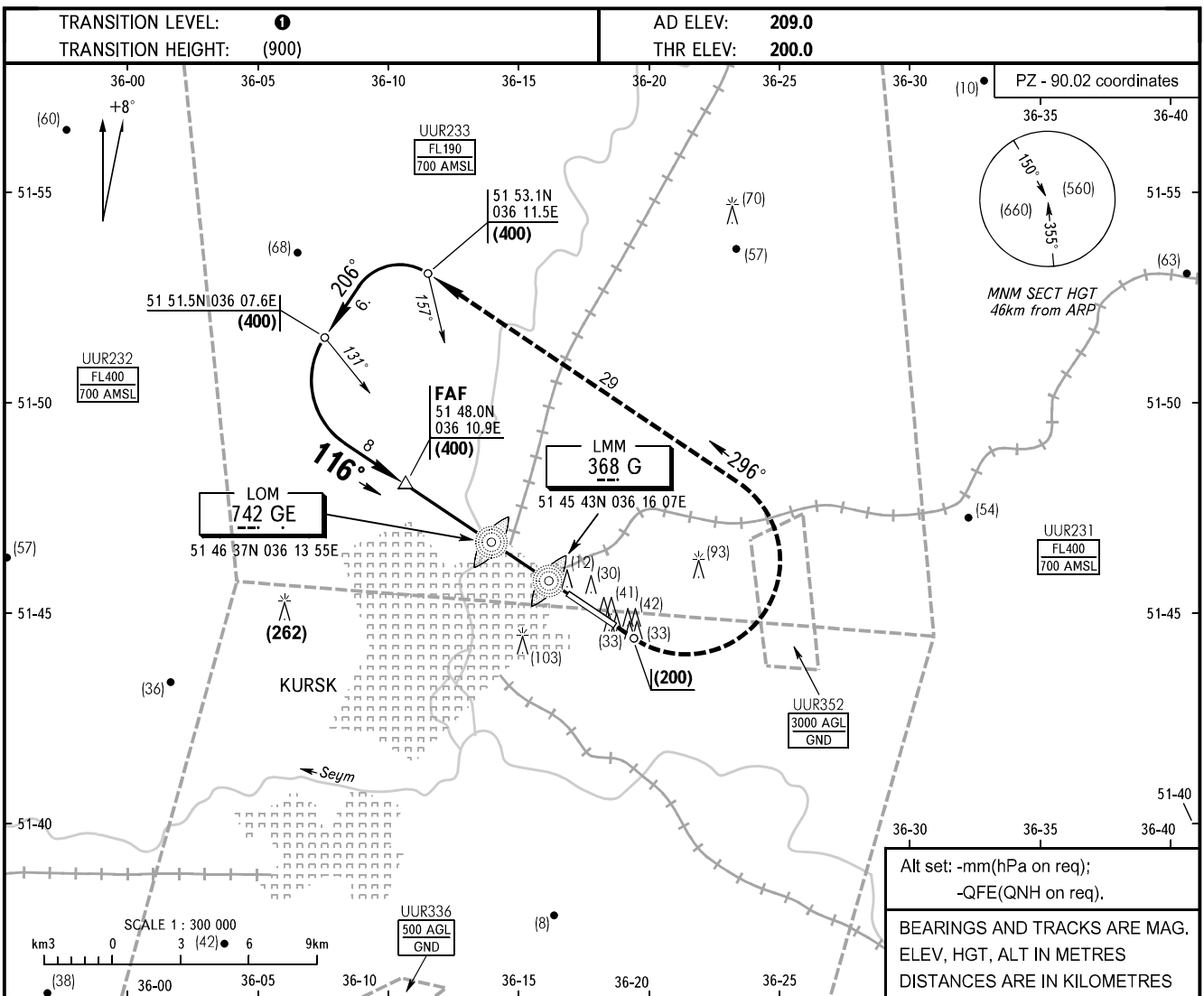


**INSTRUMENT
APPROACH
CHART - ICAO**

KRUG 131.500

**KURSK, RUSSIA
VOSTOCHNY
2 NDB RWY 12**



| OCA/H | | A | B | C | D |
|-------------|----------|----------|----------|----------|----------|
| Straight-in | With FAF | 305(105) | 305(105) | 305(105) | 305(105) |
| | WO FAF | 465(265) | 465(265) | 465(265) | 465(265) |
| Approach | | | | | |

① TRANSITION LEVEL:
 - FL050 when atmospheric pressure is 741mm mercury column or above;
 - FL060 when atmospheric pressure is less than 741mm mercury column.

| | | | | | | | | | | | | |
|-----------------|---------|------|------|------|------|------|------|------|------|------|------|------|
| GROUND SPEED | km/h | 150 | 180 | 210 | 240 | 270 | 300 | 330 | 360 | 390 | 420 | 450 |
| LOM-THR 4030m | min:sec | 1.37 | 1.21 | 1.09 | 1.00 | 0.54 | 0.48 | 0.44 | 0.40 | 0.37 | 0.35 | 0.32 |
| RATE OF DESCENT | m/s | 1.9 | 2.3 | 2.7 | 3.1 | 3.4 | 3.8 | 4.2 | 4.6 | 5.0 | 5.4 | 5.7 |

CHANGE: New chart