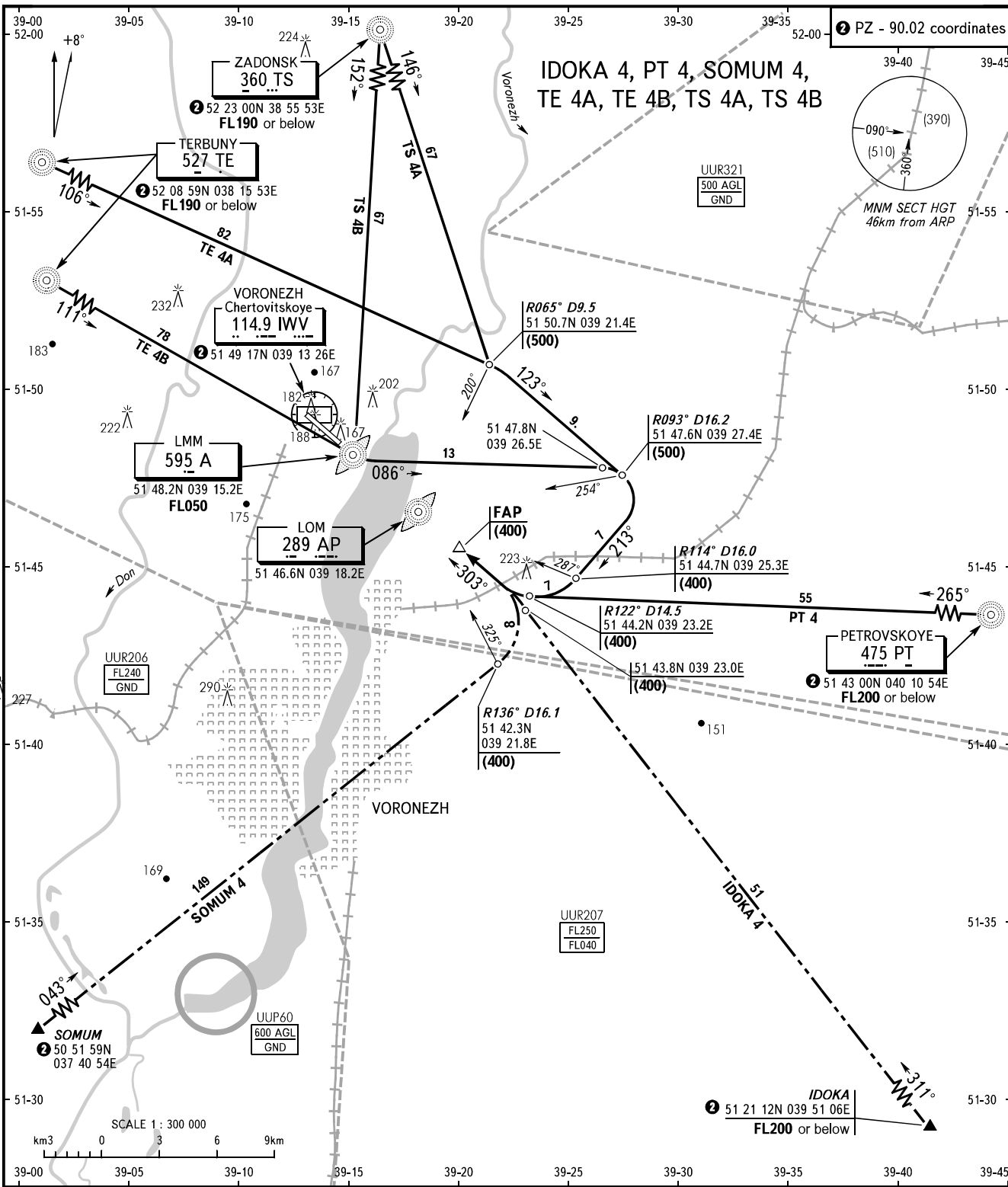


STANDARD ARRIVAL CHART
INSTRUMENT (STAR) - ICAO

VORONEZH, RUSSIA
CHERTOVITSKOYE
RWY 30

TRANSITION
LEVEL: **1**



APPROACH TOWER	FL200 or below	125.9
		118.3

1 TRANSITION LEVEL:
- FL040 when atmospheric pressure is 746mm mercury column or above;
- FL050 when atmospheric pressure is less than 746mm and is 719mm or above.

WARNING
Altitudes of crossing the airway exit points are by ATC instruction.

BEARINGS AND TRACKS ARE MAGNETIC
ALTITUDES, HEIGHTS AND ELEVATIONS ARE IN METRES
DISTANCES ARE IN KILOMETRES

CHANGE: OBST, COORD, R, P areas