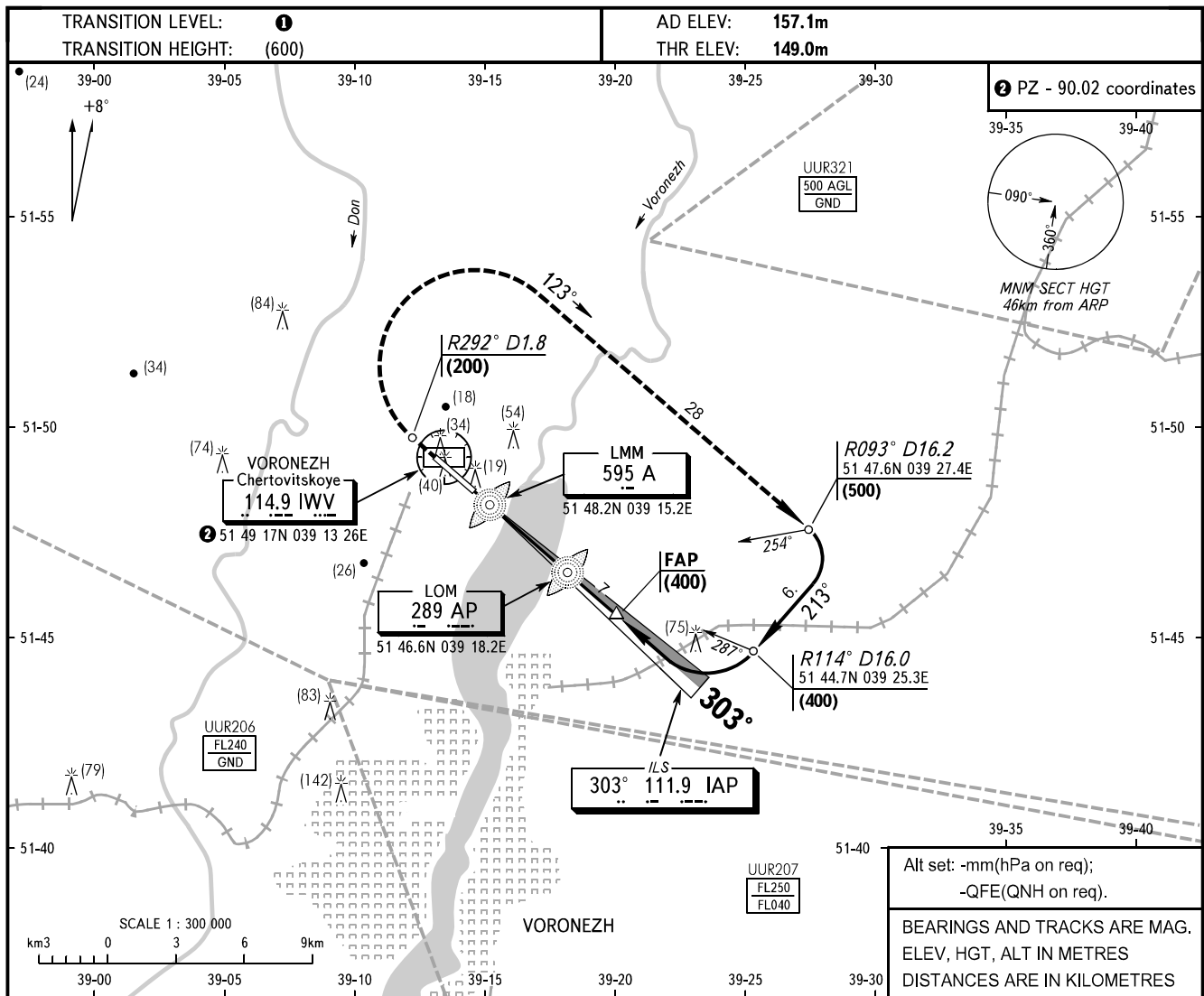


**INSTRUMENT
APPROACH
CHART - ICAO**

APPROACH FL200 or below **125.9**
TOWER **118.3**

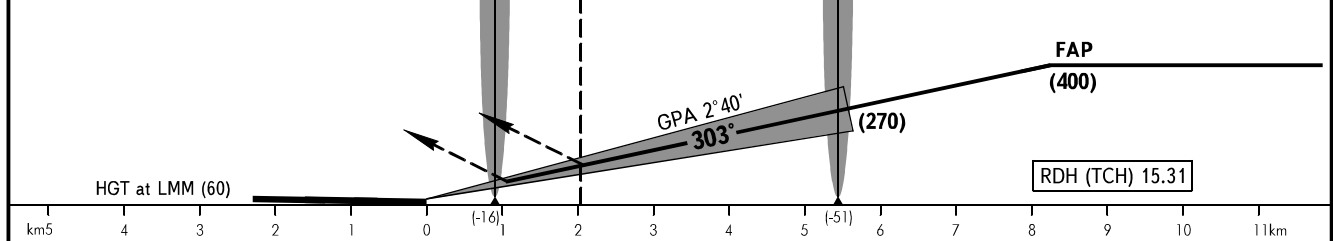
**VORONEZH, RUSSIA
CHERTOVITSKOYE
ILS, 2 NDB, NDB RWY 30**



Alt set: -mm(hPa on req);
-QFE(QNH on req).

BEARINGS AND TRACKS ARE MAG.
ELEV, HGT, ALT IN METRES
DISTANCES ARE IN KILOMETRES

MISSED APPROACH
Climb on track 303° to (200), then turn RIGHT on track 123° climbing to (500), then according to chart.



OCA/H		A	B	C	D	
Straight-in	ILS	201(52)	204(55)	207(58)	212(63)	
	Approach	2 NDB	261(112)	261(112)	261(112)	261(112)
		NDB(LOM)	438(289)	438(289)	438(289)	438(289)

1 TRANSITION LEVEL:
- FL040 when atmospheric pressure is 746mm mercury column or above;
- FL050 when atmospheric pressure is less than 746mm and is 719mm or above.

WARNING:
1. Wind shear with downdraughts may be expected on final.
2. Under conditions of air turbulence short duration activation of ground proximity warning system may be arised at heights from 100m to 30m.

GROUND SPEED	km/h	150	180	210	240	270	300	330	360	390	420	450
LOM-THR 5440m	min:s	2.10	1.48	1.33	1.21	1.12	1.05	0.59	0.54	0.50	0.47	0.43
RATE OF DESCENT (Grad 4.7%)	m/s	1.9	2.2	2.6	3.0	3.4	3.7	4.1	4.5	4.8	5.1	5.6