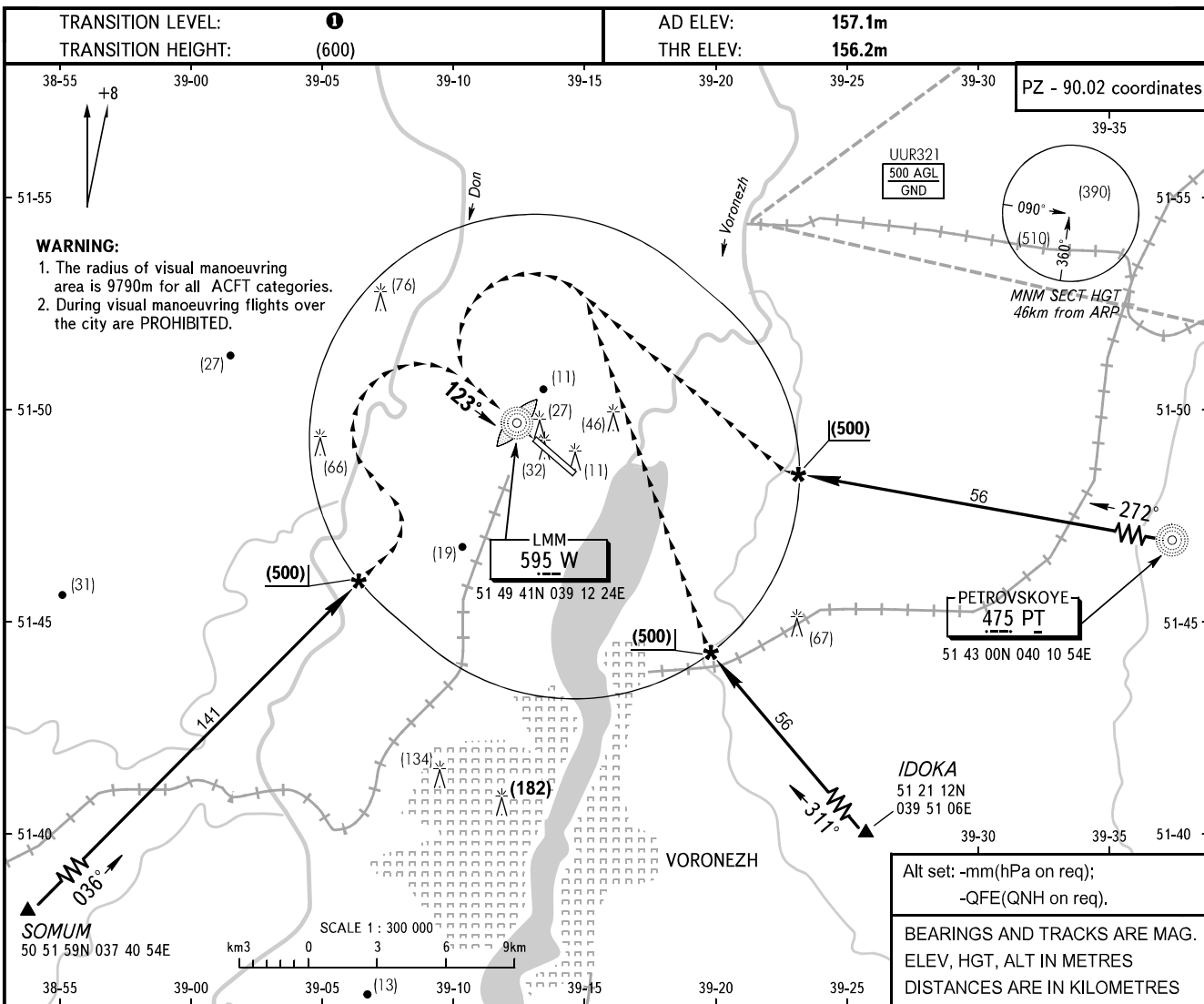


VISUAL
APPROACH
CHART - ICAO

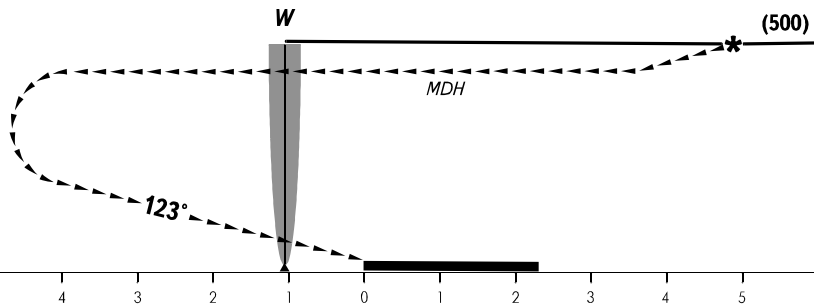
TOWER 118.3

VORONEZH, RUSSIA
CHERTOVITSKOYE
CIRCLING RWY 12



MISSED APPROACH

Climb on track 123° to (200), then turn LEFT on track 303° climbing to (500), then according to chart.



| OCA/H | | A | B | C | D |
|------------------------------------|---------------|----------|----------|----------|----------|
| Visual Manoeuvring (Circling) Area | | 326(170) | 326(170) | 356(200) | 366(210) |
| | | | | | |
| | | | | | |
| ACFT CAT | | A | B | C | D |
| MET conditions | MDH, m | 180 | 180 | 210 | 210 |
| | Cloud base, m | 250 | 250 | 310 | 310 |
| | Visibility, m | 2500 | 2500 | 3000 | 4000 |

1 TRANSITION LEVEL:
FL040 when atmospheric pressure is 746mm mercury column or above;
FL050 when atmospheric pressure is 719mm mercury column or above and less than 746mm.

CHANGE: New chart