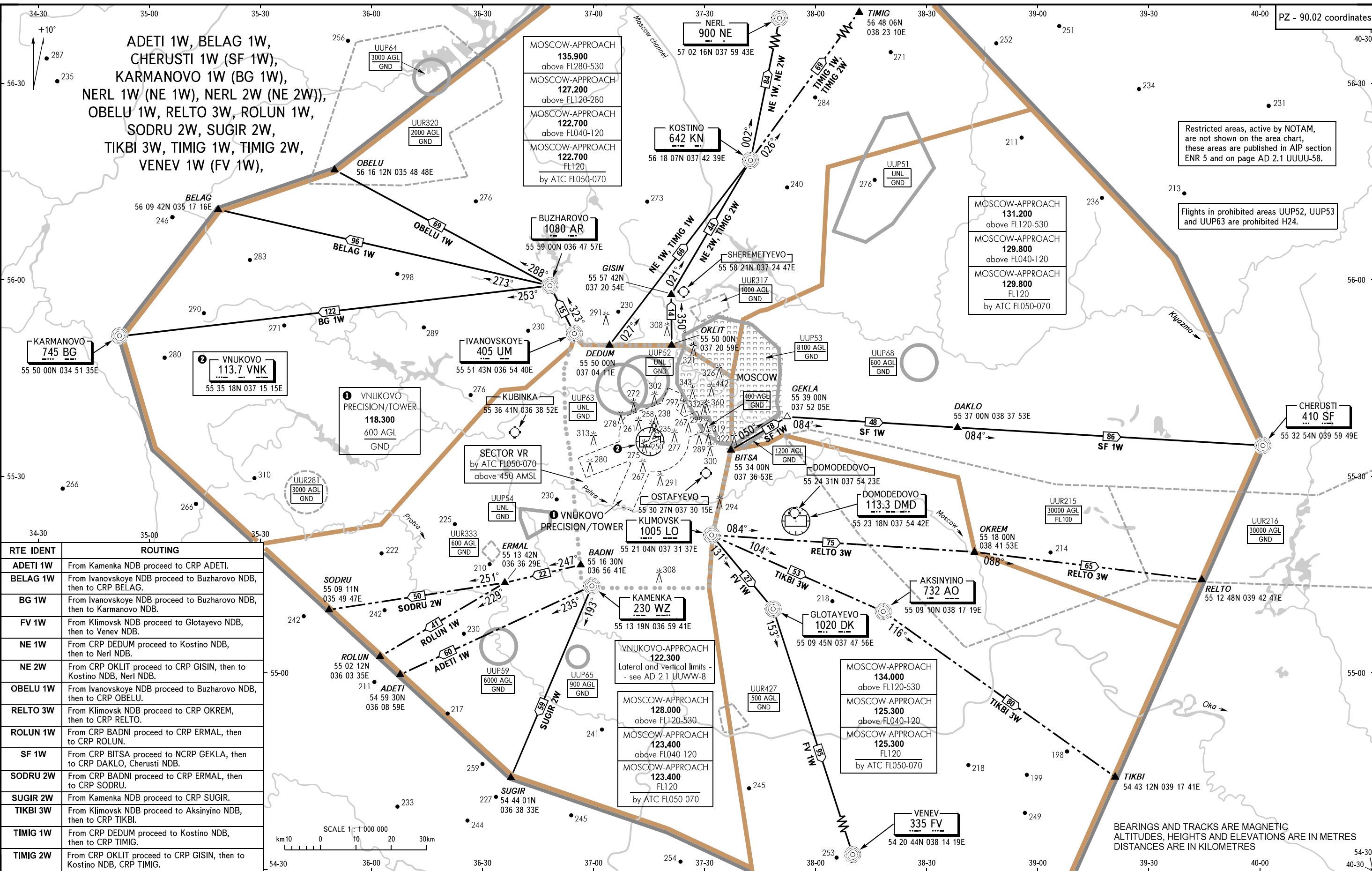


MOSCOW, RUSSIA  
VNUKOVO  
DEPARTURE

DEPARTURE ROUTES

AREA CHART - ICAO



ADETI 1W, BELAG 1W,  
CHERUSTI 1W (SF 1W),  
KARMANOVO 1W (BG 1W),  
NERL 1W (NE 1W), NERL 2W (NE 2W)),  
OBELU 1W, RELTO 3W, ROLUN 1W,  
SODRU 2W, SUGIR 2W,  
TIKBI 3W, TIMIG 1W, TIMIG 2W,  
VENEV 1W (FV 1W),

MOSCOW-APPROACH  
**135.900**  
above FL280-530  
MOSCOW-APPROACH  
**127.200**  
above FL120-280  
MOSCOW-APPROACH  
**122.700**  
above FL040-120  
MOSCOW-APPROACH  
**122.700**  
FL120  
by ATC FL050-070

MOSCOW-APPROACH  
**131.200**  
above FL120-530  
MOSCOW-APPROACH  
**129.800**  
above FL040-120  
MOSCOW-APPROACH  
**129.800**  
FL120  
by ATC FL050-070

VNUKOVO-APPROACH  
**122.300**  
Lateral and vertical limits -  
- see AD 2.1 UJWW-8  
MOSCOW-APPROACH  
**128.000**  
above FL120-530  
MOSCOW-APPROACH  
**123.400**  
above FL040-120  
MOSCOW-APPROACH  
**123.400**  
FL120  
by ATC FL050-070

MOSCOW-APPROACH  
**134.000**  
above FL120-530  
MOSCOW-APPROACH  
**125.300**  
above FL040-120  
MOSCOW-APPROACH  
**125.300**  
FL120  
by ATC FL050-070

RTE IDENT	ROUTING
ADETI 1W	From Kamenka NDB proceed to CRP ADETI.
BELAG 1W	From Ivanovskoye NDB proceed to Buzharovo NDB, then to CRP BELAG.
BG 1W	From Ivanovskoye NDB proceed to Buzharovo NDB, then to Karmanovo NDB.
FV 1W	From Klimovsk NDB proceed to Glotayevo NDB, then to Venev NDB.
NE 1W	From CRP DEDUM proceed to Kostino NDB, then to Nerl NDB.
NE 2W	From CRP OKLIT proceed to CRP GISIN, then to Kostino NDB, Nerl NDB.
OBELU 1W	From Ivanovskoye NDB proceed to Buzharovo NDB, then to CRP OBELU.
RELTO 3W	From Klimovsk NDB proceed to CRP OKREM, then to CRP RELTO.
ROLUN 1W	From CRP BADNI proceed to CRP ERMAL, then to CRP ROLUN.
SF 1W	From CRP BITSA proceed to NCRP GEKLA, then to CRP DAKLO, Cherusti NDB.
SODRU 2W	From CRP BADNI proceed to CRP ERMAL, then to CRP SODRU.
SUGIR 2W	From Kamenka NDB proceed to CRP SUGIR.
TIKBI 3W	From Klimovsk NDB proceed to Aksinyino NDB, then to CRP TIKBI.
TIMIG 1W	From CRP DEDUM proceed to Kostino NDB, then to CRP TIMIG.
TIMIG 2W	From CRP OKLIT proceed to CRP GISIN, then to Kostino NDB, CRP TIMIG.

Restricted areas, active by NOTAM, are not shown on the area chart, these areas are published in AIP section ENR 5 and on page AD 2.1 UUUU-58.

Flights in prohibited areas UUP52, UUP53 and UUP63 are prohibited H24.

BEARINGS AND TRACKS ARE MAGNETIC  
ALTITUDES, HEIGHTS AND ELEVATIONS ARE IN METRES  
DISTANCES ARE IN KILOMETRES