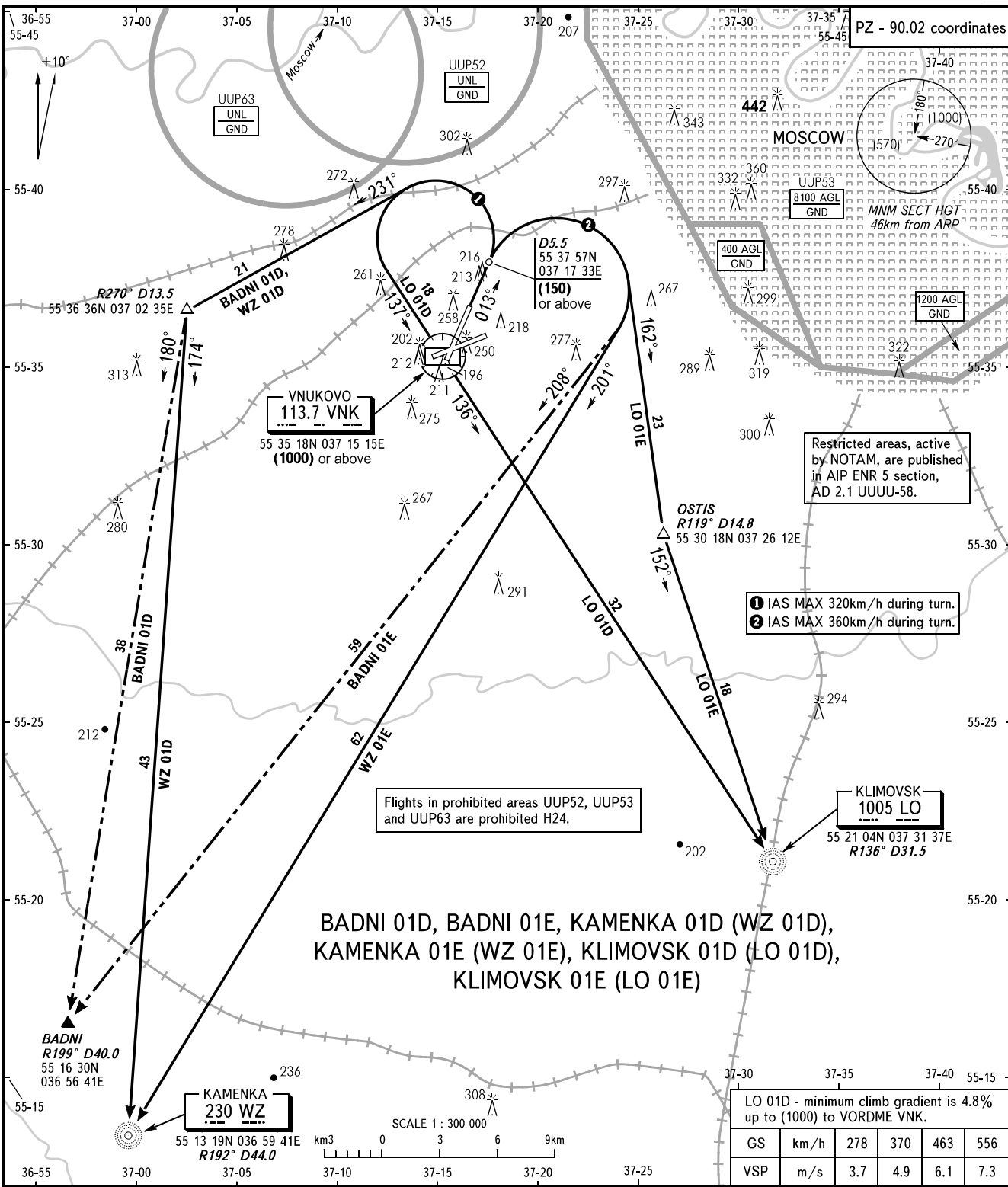


STANDARD DEPARTURE CHART  
INSTRUMENT (SID) - ICAO

TRANSITION  
HEIGHT : (1000)

MOSCOW, RUSSIA  
VNUKOVO  
RWY 01



Restricted areas, active by NOTAM, are published in AIP ENR 5 section, AD 2.1 UUUU-58.

- ① IAS MAX 320km/h during turn.
- ② IAS MAX 360km/h during turn.

Flights in prohibited areas UUP52, UUP53 and UUP63 are prohibited H24.

**BADNI 01D, BADNI 01E, KAMENKA 01D (WZ 01D),  
KAMENKA 01E (WZ 01E), KLIMOVSK 01D (LO 01D),  
KLIMOVSK 01E (LO 01E)**

LO 01D - minimum climb gradient is 4.8% up to (1000) to VORDME VNK.

GS	km/h	278	370	463	556
VSP	m/s	3.7	4.9	6.1	7.3

VNUKOVO TOWER **118.300**  
RADAR **126.000**  
MOSCOW APPROACH **See AD 2.1 UJWW-55**

- WARNING:**
1. All ACFT shall follow the noise abatement procedures at all times as in accordance with ICAO DOC 8168.
  2. After climbing to (200) immediately contact VnuKovo-Radar on 126.000.
  3. Initially cleared height of climb after take-off for all SID routes is (600).
  4. Minimum climb gradient is 5.8% up to (150).
  5. IAS MAX 460km/h up to FL100.

BEARINGS AND TRACKS ARE MAGNETIC  
ALTITUDES, HEIGHTS AND ELEVATIONS ARE IN METRES  
DISTANCES ARE IN KILOMETRES

CHANGE: New chart