

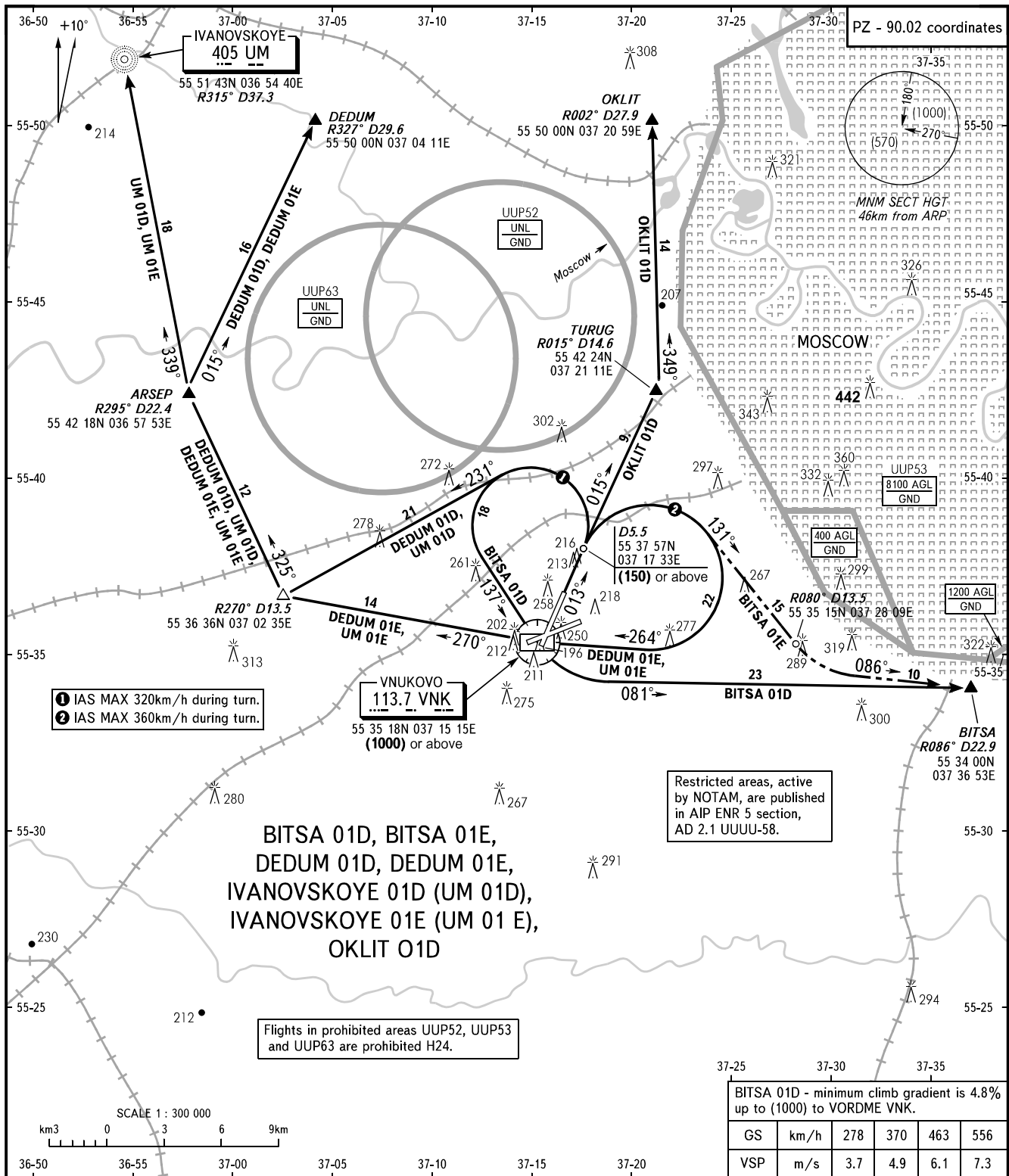
STANDARD DEPARTURE CHART
INSTRUMENT (SID) - ICAO

TRANSITION
HEIGHT : (1000)

MOSCOW, RUSSIA

VNUKOVO

RWY 01



VNUKOVO TOWER **118.300**
 RADAR **126.000**
 MOSCOW APPROACH **See AD 2.1 UUWW-55**

WARNING:

- All ACFT shall follow the noise abatement procedures at all times as in accordance with ICAO DOC 8168.
- After climbing to (200) immediately contact Vnukovo-Radar on 126.000.
- Initially cleared height of climb after take-off for all SID routes is (600).
- Minimum climb gradient is 5.8% up to (150).
- IAS MAX 460km/h up to FL100.

BEARINGS AND TRACKS ARE MAGNETIC
 ALTITUDES, HEIGHTS AND ELEVATIONS ARE IN METRES
 DISTANCES ARE IN KILOMETRES