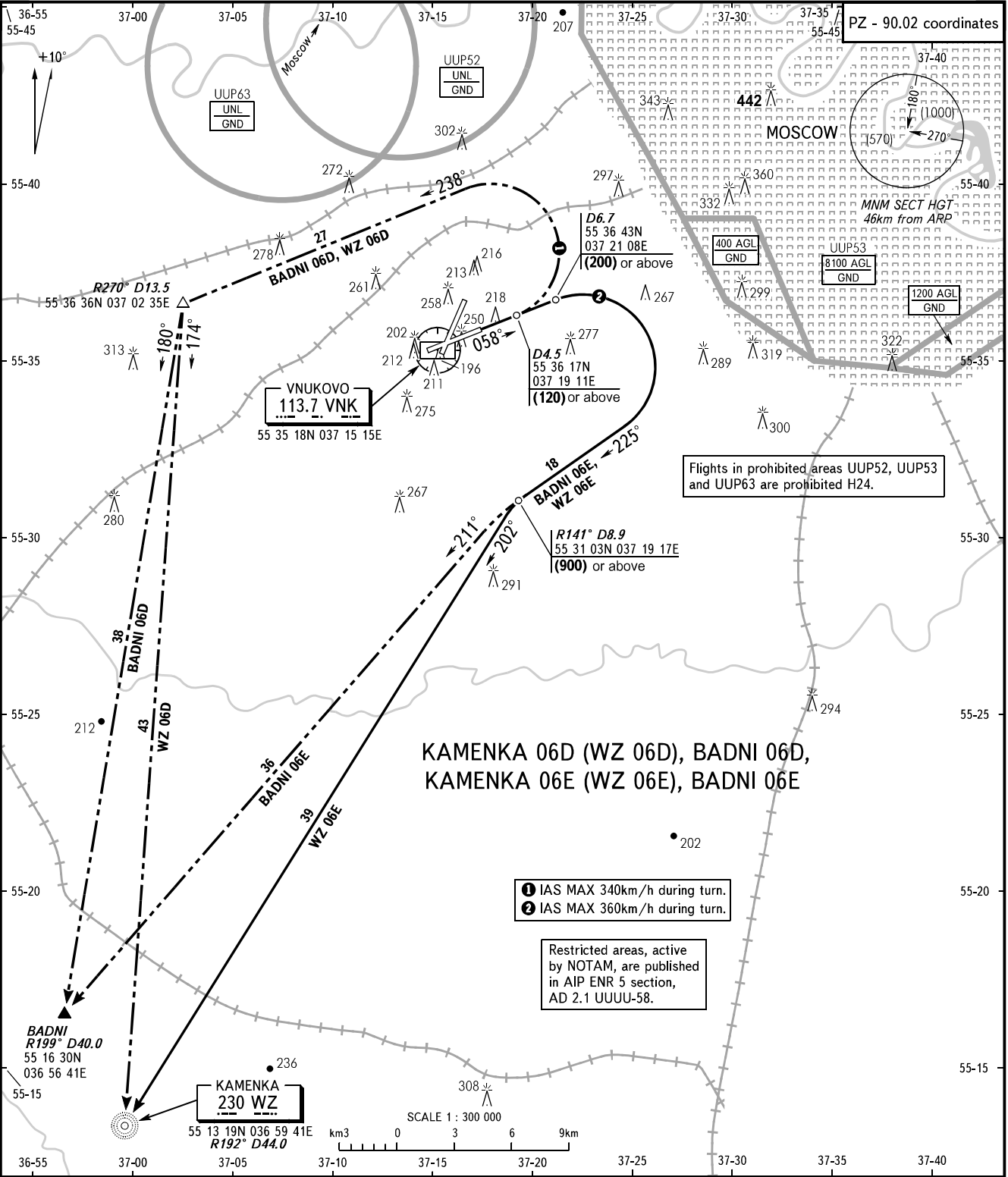


STANDARD DEPARTURE CHART
INSTRUMENT (SID) - ICAO

TRANSITION
HEIGHT : (1000)

MOSCOW, RUSSIA
VNUKOVO
RWY 06



VNUKOVO TOWER
RADAR
MOSCOW APPROACH

118.300
126.000
See AD 2.1 UUUW-55

BEARINGS AND TRACKS ARE MAGNETIC
ALTITUDES, HEIGHTS AND ELEVATIONS ARE IN METRES
DISTANCES ARE IN KILOMETRES

WARNING:

1. All ACFT shall follow the noise abatement procedures at all times as in accordance with ICAO DOC 8168.

2. After climbing to (200) immediately contact Vnukovo-Radar on 126.000.

3. Initially cleared height of climb after take-off for all SID routes is (600).

4. Minimum climb gradient is 5.8% up to (120).

5. IAS MAX 460km/h up to FL100.

Federal Air Transport Agency

AIRAC AMDT 07/13