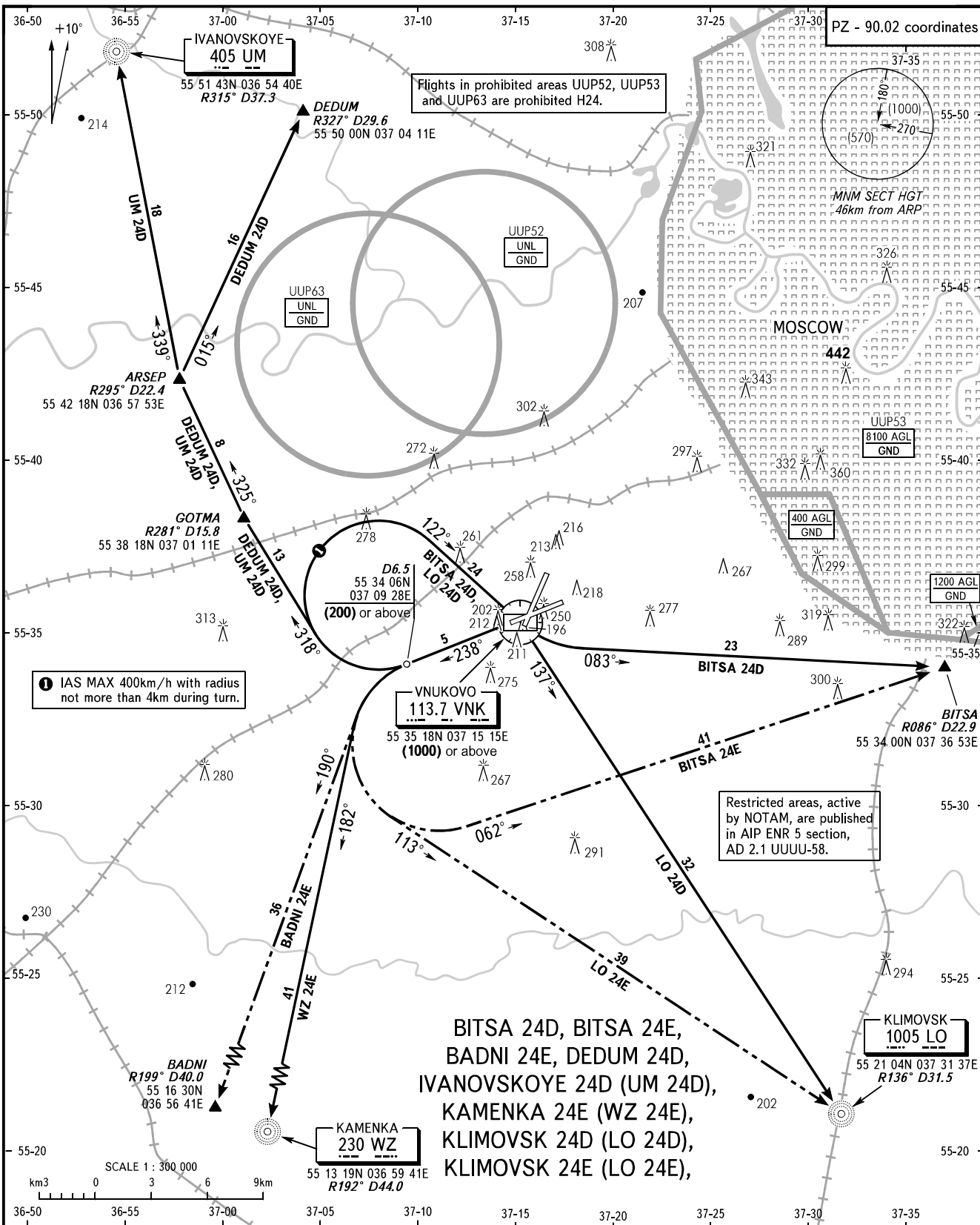


STANDARD DEPARTURE CHART
INSTRUMENT (SID) - ICAO

TRANSITION
HEIGHT : (1000)

MOSCOW, RUSSIA
VNUKOVO
RWY 24



Flights in prohibited areas UUP52, UUP53 and UUP63 are prohibited H24.

Restricted areas, active by NOTAM, are published in AIP ENR 5 section, AD 2.1 UUUU-58.

① IAS MAX 400km/h with radius not more than 4km during turn.

BITSA 24D, BITSA 24E, BADNI 24E, DEDUM 24D, IVANOVSKOYE 24D (UM 24D), KAMENKA 24E (WZ 24E), KLIMOVSK 24D (LO 24D), KLIMOVSK 24E (LO 24E),

VNUKOVO TOWER 118.300
RADAR 126.000
MOSCOW APPROACH See AD 2.1 UUWW-55

- WARNING:**
- All ACFT shall follow the noise abatement procedures at all times as in accordance with ICAO DOC 8168.
 - After climbing to (200) immediately contact Vnukovo-Radar on 126.000.
 - Initially cleared height of climb after take-off for all SID routes is (600).
 - IAS MAX 460km/h up to FL100.

BEARINGS AND TRACKS ARE MAGNETIC
ALTITUDES, HEIGHTS AND ELEVATIONS ARE IN METRES
DISTANCES ARE IN KILOMETRES

CHANGE: New chart