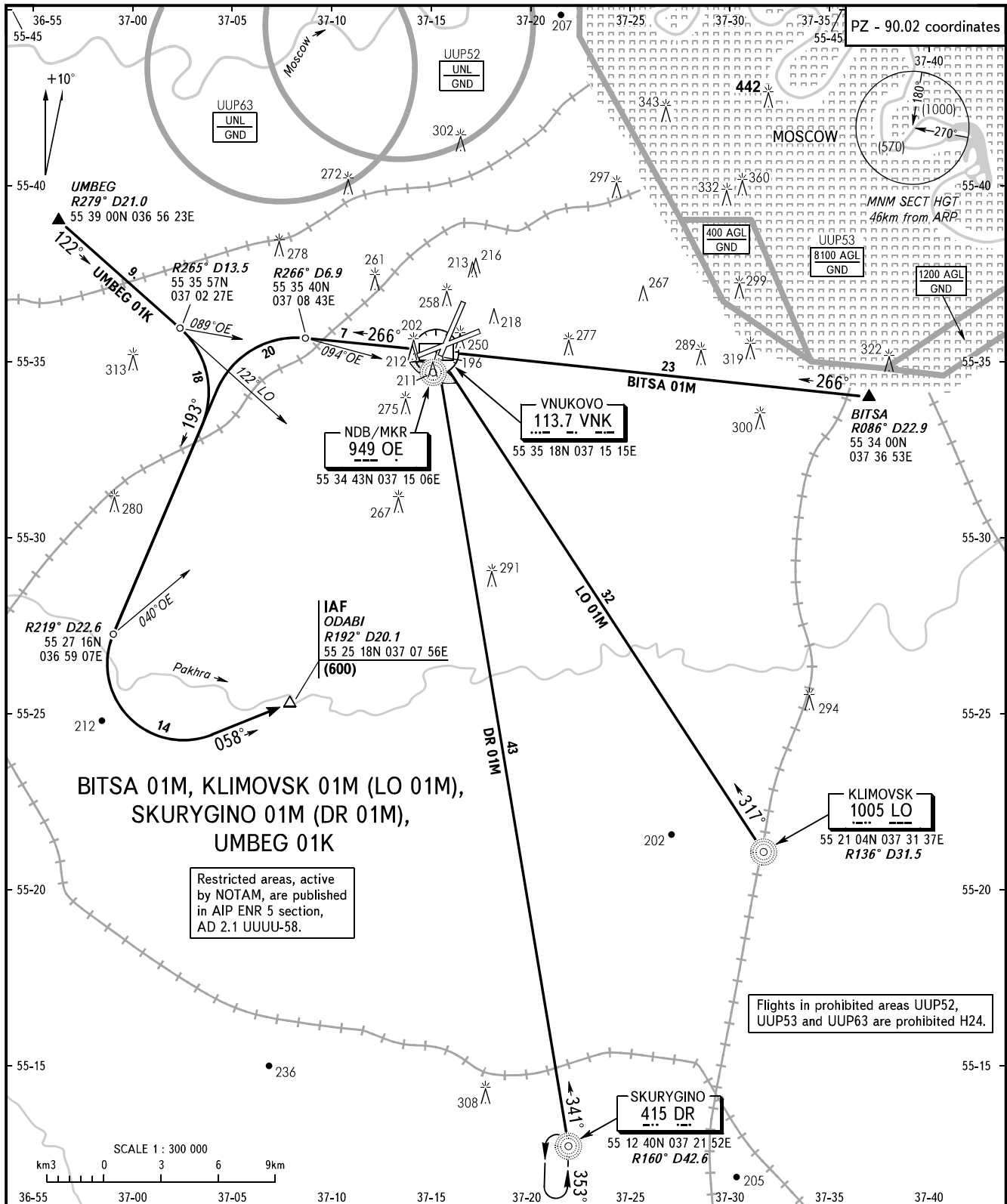


STANDARD ARRIVAL CHART  
INSTRUMENT (STAR) - ICAO

TRANSITION  
LEVEL : By ATC

MOSCOW, RUSSIA  
VNUKOVO  
RWY 01



VNUKOVO TOWER **118.300**  
 RADAR **126.000**  
 MOSCOW APPROACH **See AD 2.1 UUUW-56**

BEARINGS AND TRACKS ARE MAGNETIC  
 ALTITUDES, HEIGHTS AND ELEVATIONS ARE IN METRES  
 DISTANCES ARE IN KILOMETRES

CHANGE: New chart