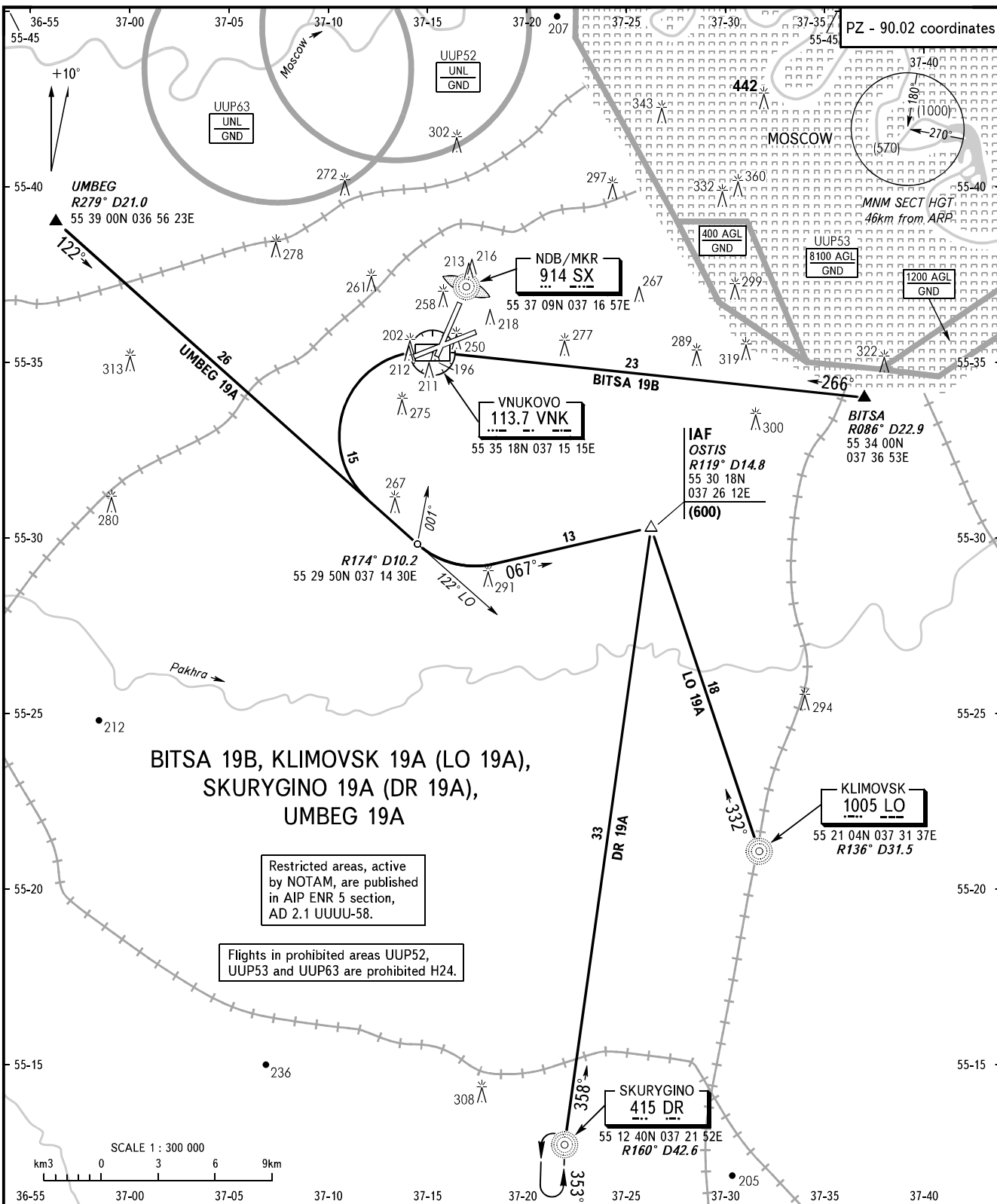


STANDARD ARRIVAL CHART
INSTRUMENT (STAR) - ICAO

TRANSITION
LEVEL: **By ATC**

MOSCOW, RUSSIA
VNUKOVO
RWY 19



BITSA 19B, KLIMOVSK 19A (LO 19A),
SKURYGINO 19A (DR 19A),
UMBEG 19A

Restricted areas, active by NOTAM, are published in AIP ENR 5 section, AD 2.1 UUUU-58.

Flights in prohibited areas UUP52, UUP53 and UUP63 are prohibited H24.

VNUKOVO TOWER **118.300**
RADAR **126.000**
MOSCOW APPROACH **See AD 2.1 UUUW-56**

BEARINGS AND TRACKS ARE MAGNETIC
ALTITUDES, HEIGHTS AND ELEVATIONS ARE IN METRES
DISTANCES ARE IN KILOMETRES

CHANGE: NIL