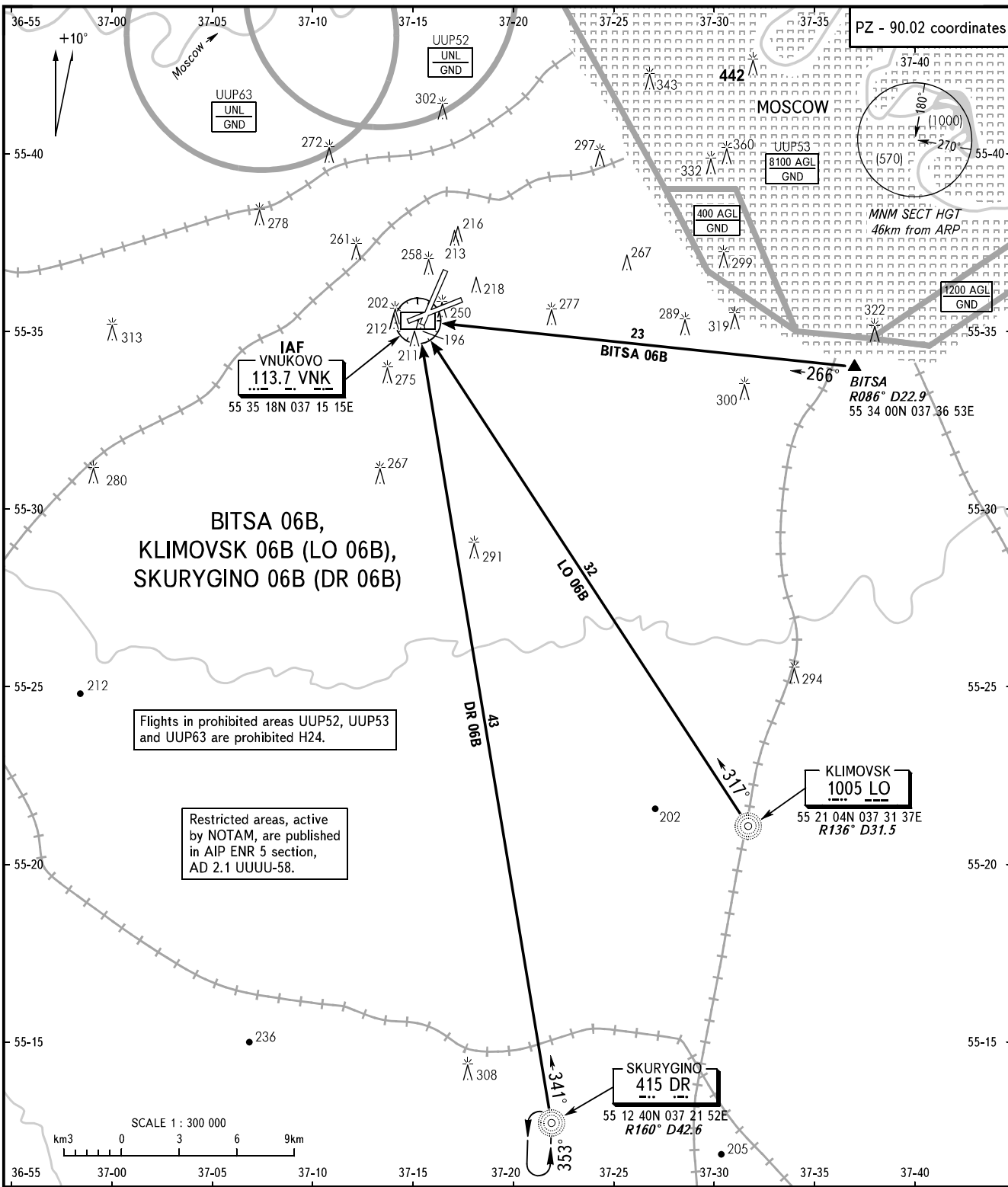


STANDARD ARRIVAL CHART
INSTRUMENT (STAR) - ICAO

MOSCOW, RUSSIA
VNUKOVO
RWY 06

TRANSITION
LEVEL : **By ATC**



VNUKOVO TOWER **118.300**
RADAR **126.000**
MOSCOW APPROACH **See AD 2.1 UJWW-56**

BEARINGS AND TRACKS ARE MAGNETIC
ALTITUDES, HEIGHTS AND ELEVATIONS ARE IN METRES
DISTANCES ARE IN KILOMETRES

CHANGE: New chart