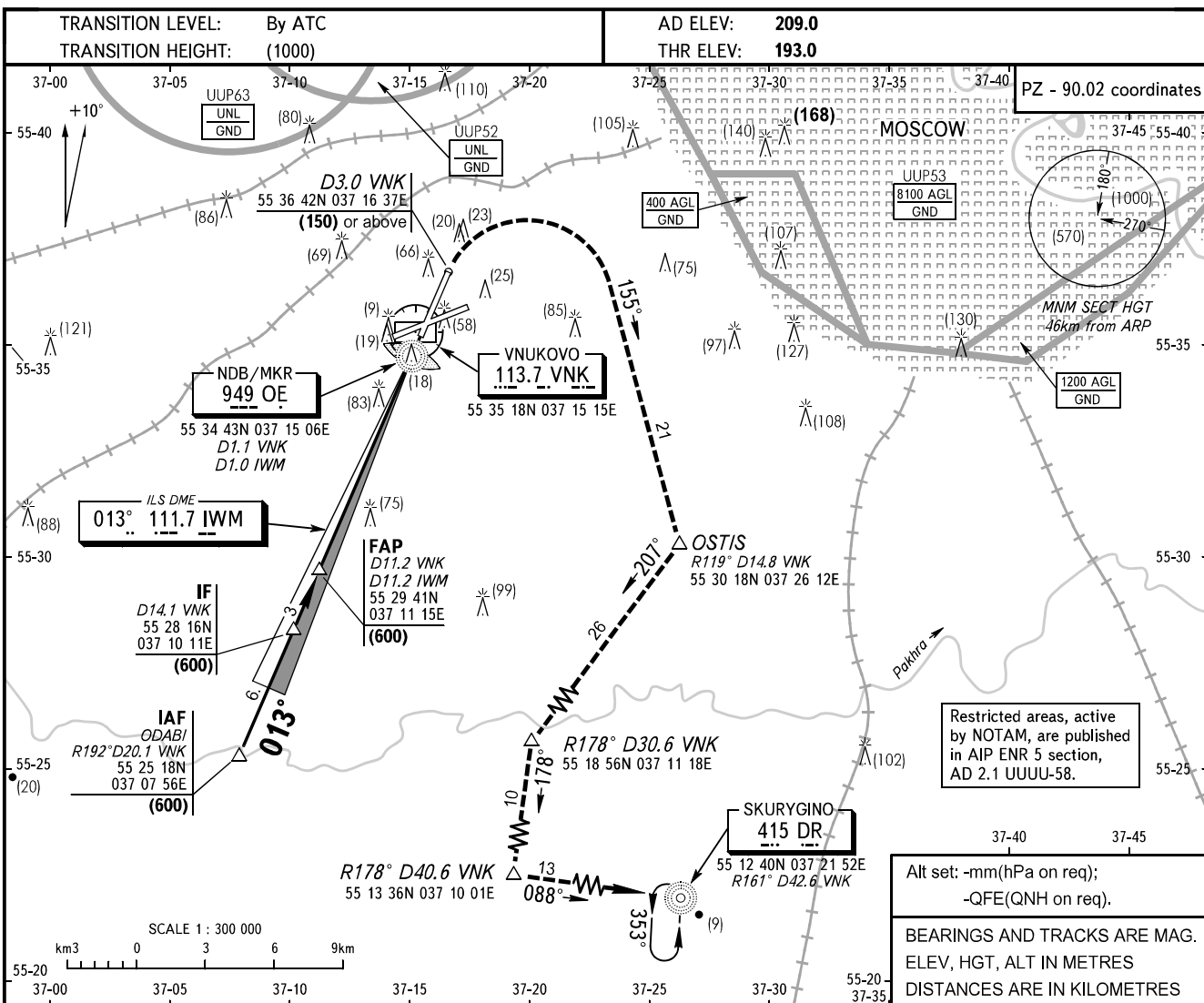


**INSTRUMENT
APPROACH
CHART - ICAO**

MOSCOW APPROACH See AD 2.1 UUWW-56
VNUKOVO RADAR 126.000
PRECISION 118.300

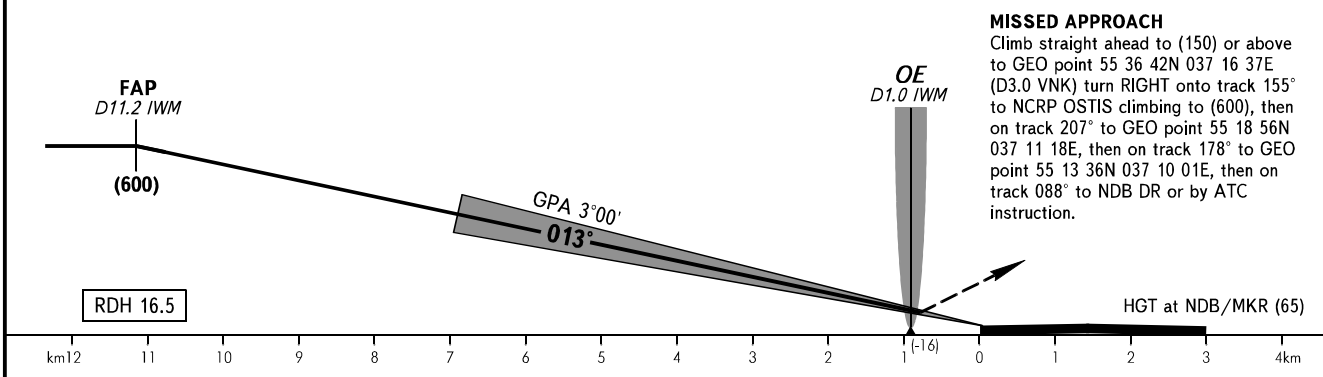
**MOSCOW, RUSSIA
VNUKOVO
ILS DME, PAR RWY 01**



Restricted areas, active by NOTAM, are published in AIP ENR 5 section, AD 2.1 UUUU-58.

Alt set: -mm(hPa on req);
-QFE(QNH on req).

BEARINGS AND TRACKS ARE MAG.
ELEV, HGT, ALT IN METRES
DISTANCES ARE IN KILOMETRES



MISSED APPROACH
Climb straight ahead to (150) or above to GEO point 55 36 42N 037 16 37E (D3.0 VNK) turn RIGHT onto track 155° to NCRP OSTIS climbing to (600), then on track 207° to GEO point 55 18 56N 037 11 18E, then on track 178° to GEO point 55 13 36N 037 10 01E, then on track 088° to NDB DR or by ATC instruction.

OCA/H		A	B	C	D
Straight-in	CAT I	239(46)	242(49)	246(53)	250(57)
	PAR	261(68)	264(71)	267(74)	270(77)
Approach					

WARNING
After climbing to (200) immediately contact Vnukovo-Radar on frequency 126.000 MHz.

GROUND SPEED	km/h	150	180	210	240	270	300	330	360	390	420	450
RATE OF DESCENT (Grad 5.2%)	m/s	2.2	2.6	3.0	3.5	3.9	4.3	4.8	5.2	5.6	6.1	6.5

CHANGE: New chart