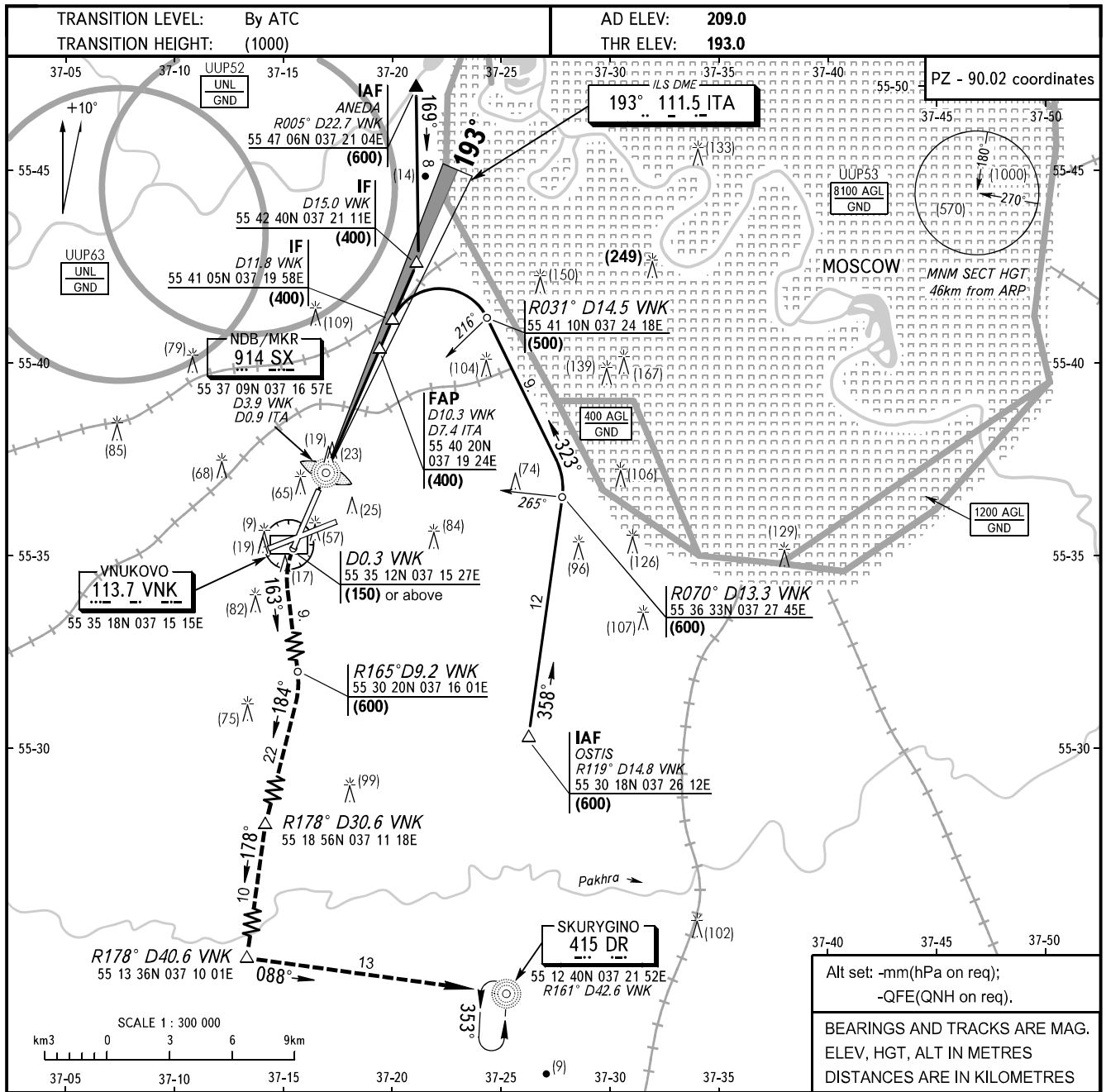


**INSTRUMENT  
APPROACH  
CHART - ICAO**

MOSCOW APPROACH **See AD 2.1 UUWW-56**  
VNUKOVO RADAR **126.000**  
PRECISION **118.300**

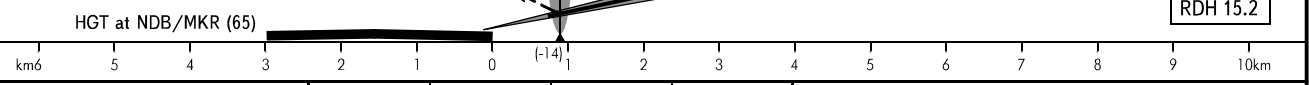
**MOSCOW, RUSSIA  
VNUKOVO  
ILS DME, PAR RWY 19**



Alt set: -mm(hPa on req);  
-QFE(QNH on req).  
BEARINGS AND TRACKS ARE MAG.  
ELEV, HGT, ALT IN METRES  
DISTANCES ARE IN KILOMETRES

**MISSED APPROACH**

Climb straight ahead to (150) or above to GEO point 55 35 12N 037 15 27E (D0.3 VNK), turn LEFT onto track 163° to GEO point 55 30 20N 037 16 01E climbing to (600), turn RIGHT onto track 184° to GEO point 55 18 56N 037 11 18E, then on track 178° to GEO point 55 13 36N 037 10 01E, then on track 088° to NDB DR or by ATC instruction.



		OCA/H	A	B	C	D							
Straight-in	CAT II		209(16)	212(19)	217(24)	222(29)							
	CAT I		239(46)	243(50)	247(54)	252(59)							
Approach	PAR		261(68)	264(71)	267(74)	270(77)							
GROUND SPEED		km/h	150	180	210	240	270	300	330	360	390	420	450
RATE OF DESCENT (Grad 5.2%)		m/s	2.2	2.6	3.0	3.5	3.9	4.3	4.8	5.2	5.6	6.1	6.5

**WARNING:**  
1. During approach via IAF OSTIS the length of intermediate approach is 1.5 km.  
2. After climbing to (200) immediately contact Vnuukovo-Radar on frequency 126.000 MHz.