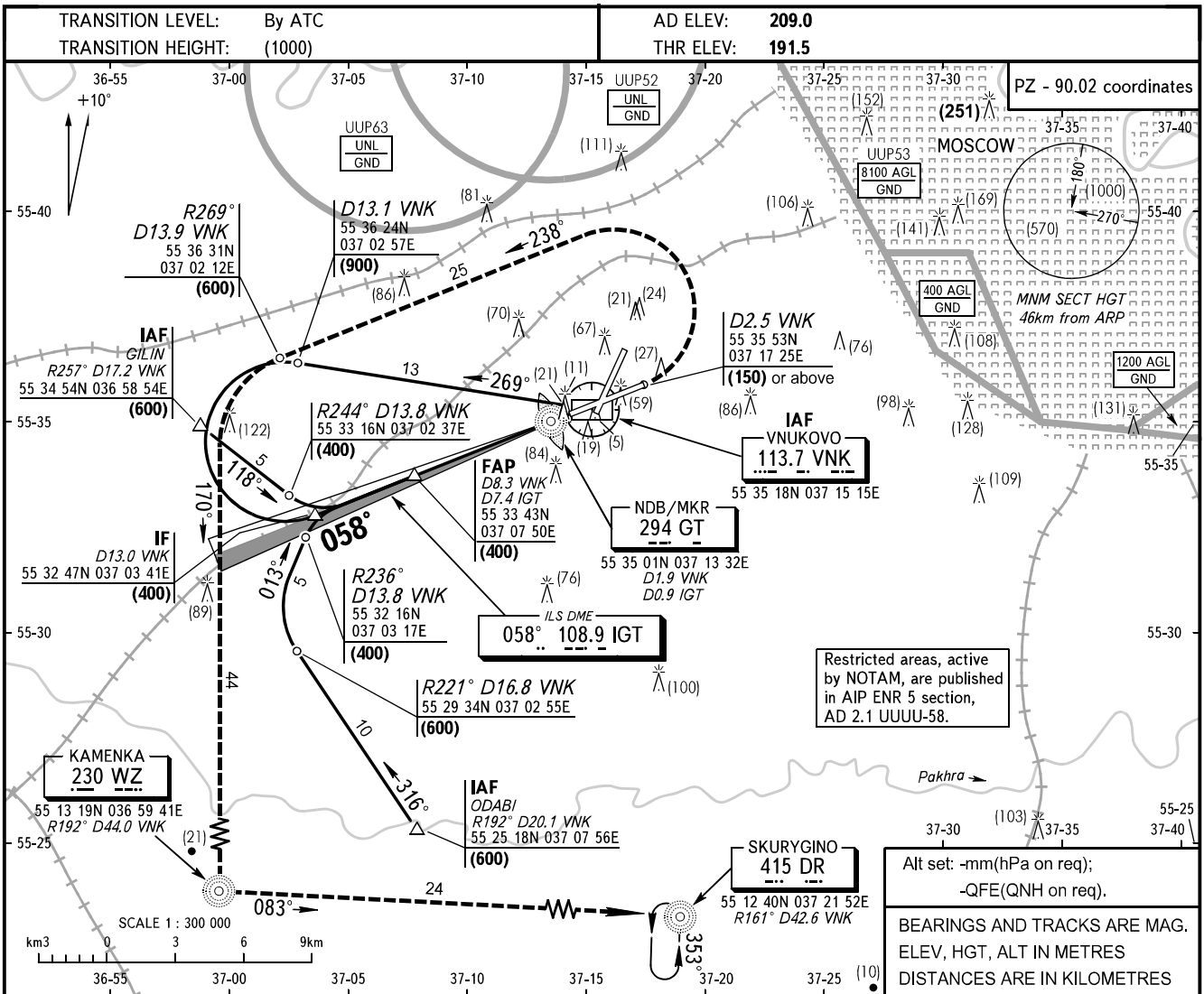


**INSTRUMENT  
APPROACH  
CHART - ICAO**

MOSCOW APPROACH See AD 2.1 UUWW-56  
VNUKOVO RADAR 126.000  
PRECISION 118.300

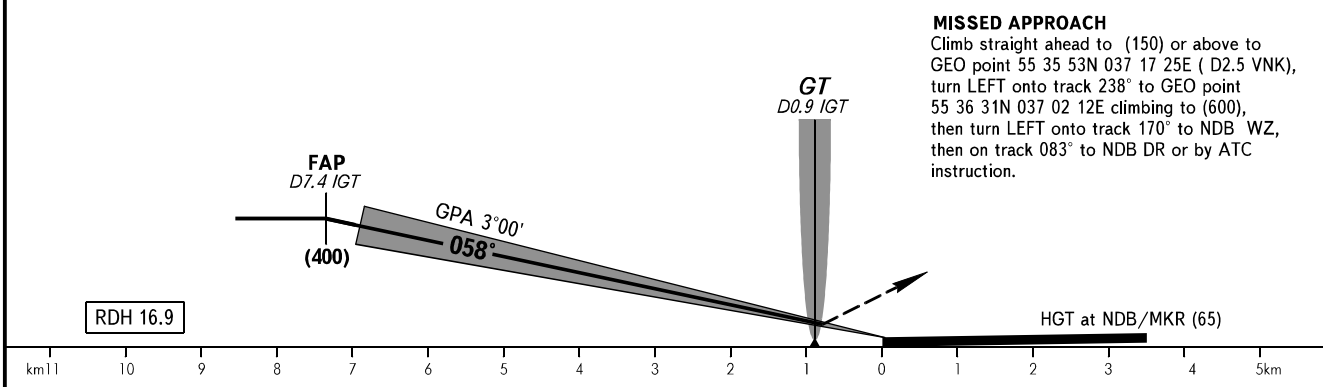
**MOSCOW, RUSSIA  
VNUKOVO  
ILS DME RWY 06**



Restricted areas, active by NOTAM, are published in AIP ENR 5 section, AD 2.1 UUUU-58.

Alt set: -mm(hPa on req);  
-QFE(QNH on req).  
BEARINGS AND TRACKS ARE MAG.  
ELEV, HGT, ALT IN METRES  
DISTANCES ARE IN KILOMETRES

**MISSED APPROACH**  
Climb straight ahead to (150) or above to GEO point 55 35 53N 037 17 25E (D2.5 VNK), turn LEFT onto track 238° to GEO point 55 36 31N 037 02 12E climbing to (600), then turn LEFT onto track 170° to NDB WZ, then on track 083° to NDB DR or by ATC instruction.



OCA/H		A	B	C	D
Straight-in Approach	<b>CAT I</b>	236(44)	239(47)	242(50)	245(53)
	<b>CAT II</b>	207(15)	211(19)	214(22)	218(26)
	<b>CAT IIIA</b>	DA(H) 207(15) RVR 200			

**WARNING**  
After climbing to (200) immediately contact Vnuکوvo-Radar on frequency 126.000 MHz.

GROUND SPEED	km/h	150	180	210	240	270	300	330	360	390	420	450
RATE OF DESCENT (Grad 5.2%)	m/s	2.2	2.6	3.0	3.5	3.9	4.3	4.8	5.2	5.6	6.1	6.5

CHANGE: New chart