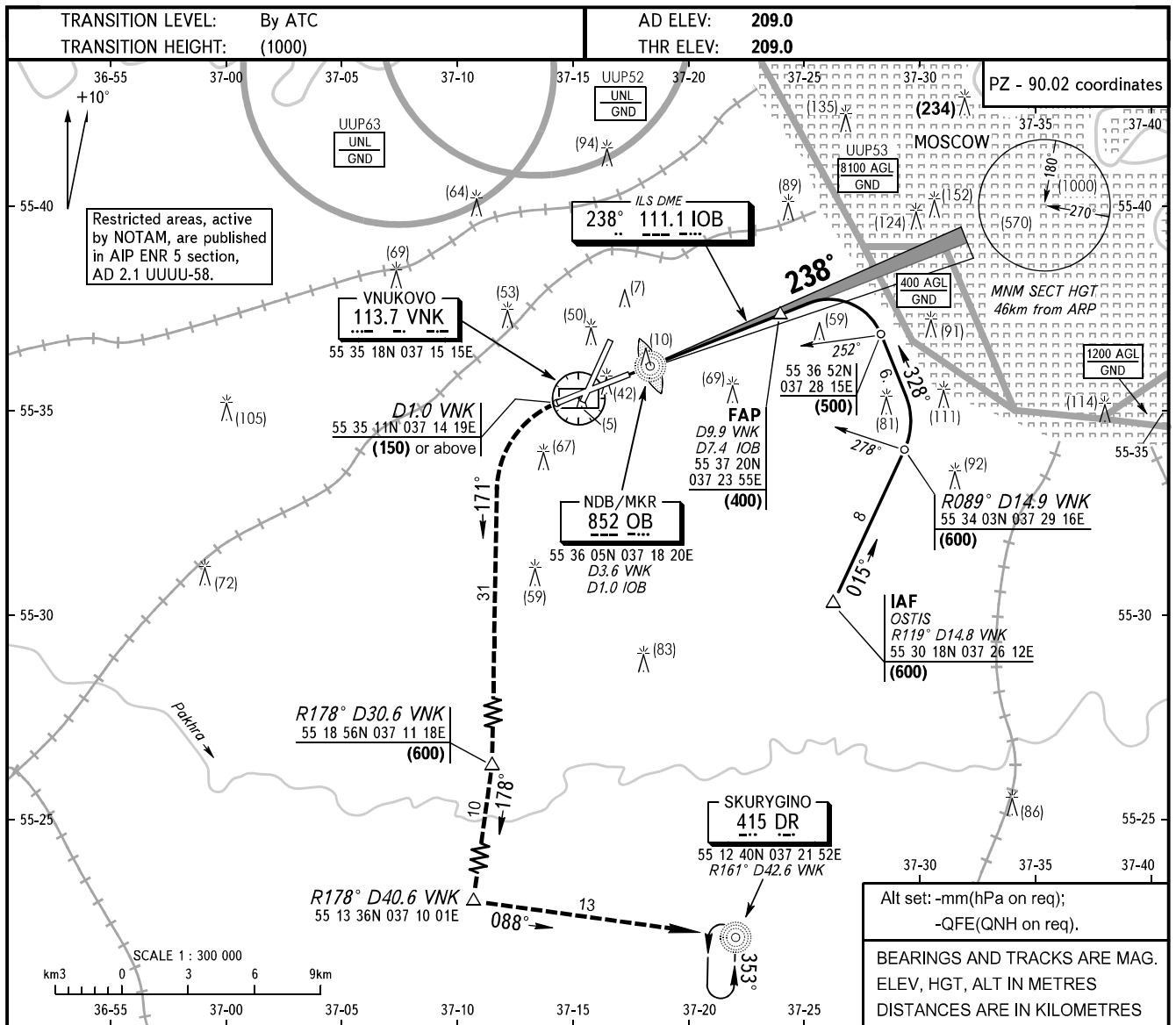


**INSTRUMENT
APPROACH
CHART - ICAO**

MOSCOW APPROACH See AD 2.1 UUWW-56
VNUKOVO RADAR 126.000
PRECISION 118.300

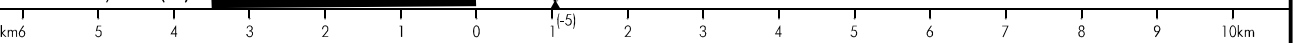
**MOSCOW, RUSSIA
VNUKOVO
ILS DME RWY 24**



MISSED APPROACH

Climb straight ahead to (150) or above to GEO point 55 35 11N 037 14 19E (D1.0 VNK), turn LEFT onto track 171° to GEO point 55 18 56N 037 11 18E climbing to (600), then turn RIGHT onto track 178° to GEO point 55 13 36N 037 10 01E, then onto track 088° to NDB DR or by ATC instruction.

HGT at NDB/MKR (70)



OCA/H		A	B	C	D								
Straight-in Approach	CAT I	250(41)	254(45)	258(49)	263(54)								
	CAT II	224(15)	228(19)	231(22)	235(26)								
	CAT IIIA	DA(H) 224(15) RVR 200											
GROUND SPEED		km/h	150	180	210	240	270	300	330	360	390	420	450
RATE OF DESCENT (Grad 5.2%)		m/s	2.2	2.6	3.0	3.5	3.9	4.3	4.8	5.2	5.6	6.1	6.5

WARNING
After climbing to (200) immediately contact Vnuukovo-Radar on frequency 126.000 MHz.