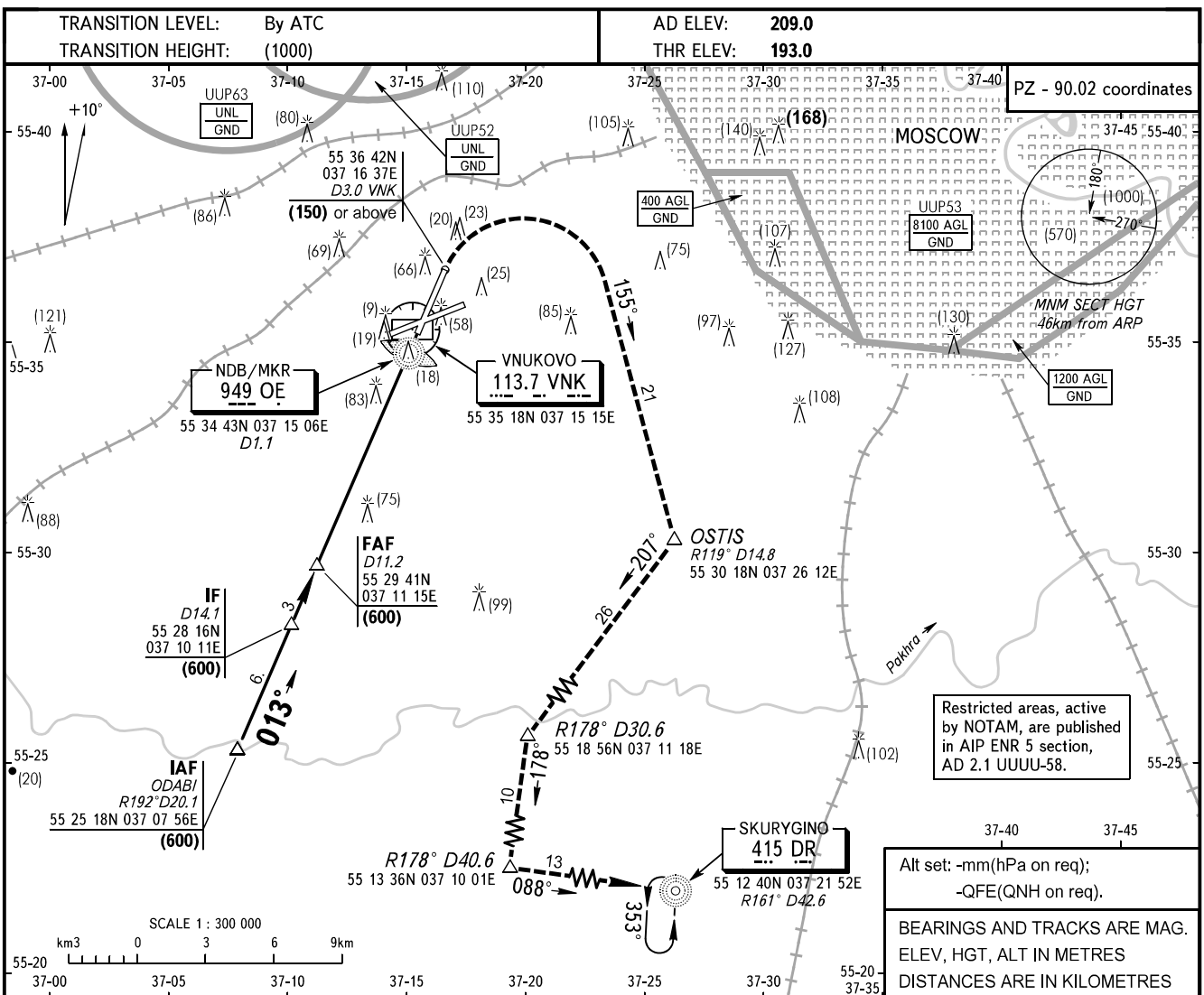


**INSTRUMENT  
APPROACH  
CHART - ICAO**

MOSCOW APPROACH See AD 2.1 UUUW-56  
VNUKOVO RADAR 126.000  
PRECISION 118.300

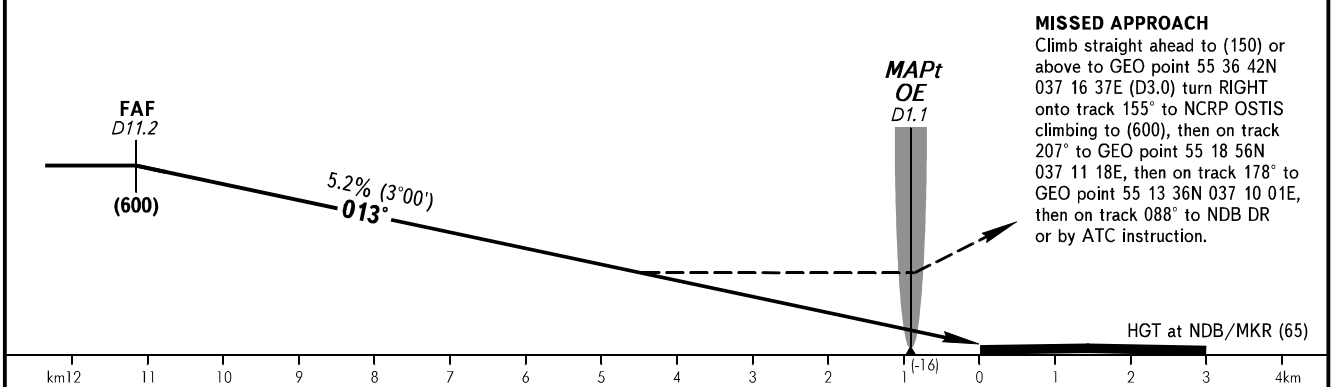
**MOSCOW, RUSSIA  
VNUKOVO  
NDB/MKR RWY 01**



Restricted areas, active by NOTAM, are published in AIP ENR 5 section, AD 2.1 UUUU-58.

Alt set: -mm(hPa on req);  
-QFE(QNH on req).

BEARINGS AND TRACKS ARE MAG. ELEV, HGT, ALT IN METRES DISTANCES ARE IN KILOMETRES



**MISSED APPROACH**  
Climb straight ahead to (150) or above to GEO point 55 36 42N 037 16 37E (D3.0) turn RIGHT onto track 155° to NCRP OSTIS climbing to (600), then on track 207° to GEO point 55 18 56N 037 11 18E, then on track 178° to GEO point 55 13 36N 037 10 01E, then on track 088° to NDB DR or by ATC instruction.

OCA/H		A	B	C	D	
Straight-in	<b>NDB/MKR</b>	With FAF	425(232)	425(232)	425(232)	425(232)
	<b>WO FAF</b>	425(232)	425(232)	425(232)	425(232)	
Approach						

**WARNING**  
After climbing to (200) immediately contact Vnuково-Radar on frequency 126.000 MHz.

GROUND SPEED	km/h	150	180	210	240	270	300	330	360	390	420	450
RATE OF DESCENT	m/s	2.2	2.6	3.0	3.5	3.9	4.3	4.8	5.2	5.6	6.1	6.5

CHANGE: New chart