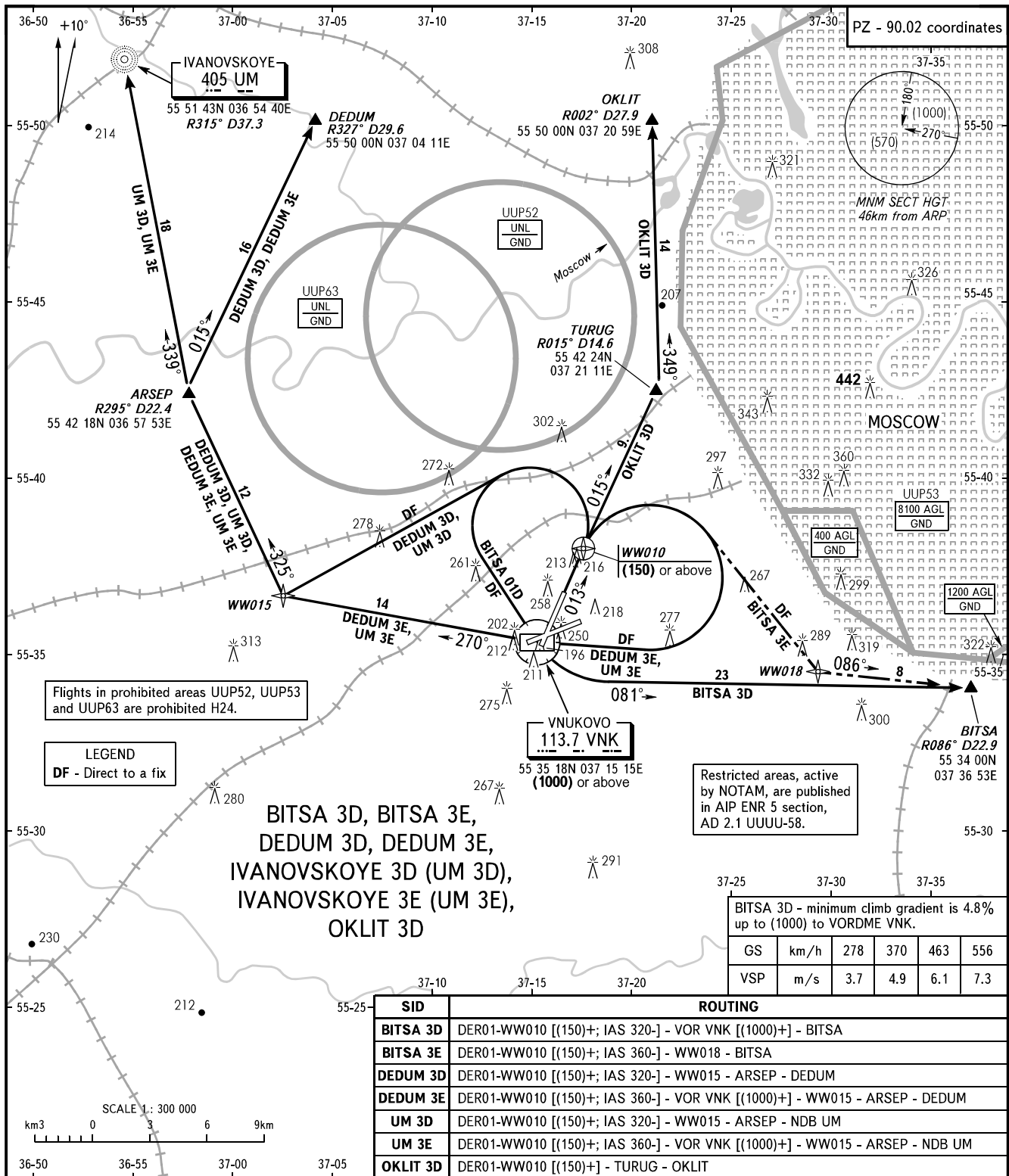


STANDARD DEPARTURE CHART  
INSTRUMENT (SID) - ICAO

TRANSITION  
HEIGHT : (1000)

MOSCOW, RUSSIA  
VNUKOVO  
RNAV RWY 01



Flights in prohibited areas UUP52, UUP53 and UUP63 are prohibited H24.

LEGEND  
DF - Direct to a fix

Restricted areas, active by NOTAM, are published in AIP ENR 5 section, AD 2.1 UUUU-58.

BITSA 3D, BITSA 3E,  
DEDUM 3D, DEDUM 3E,  
IVANOVSKOYE 3D (UM 3D),  
IVANOVSKOYE 3E (UM 3E),  
OKLIT 3D

BITSA 3D - minimum climb gradient is 4.8% up to (1000) to VORDME VNK.					
GS	km/h	278	370	463	556
VSP	m/s	3.7	4.9	6.1	7.3

SID	ROUTING
BITSA 3D	DER01-WW010 [(150)+; IAS 320] - VOR VNK [(1000)+] - BITSA
BITSA 3E	DER01-WW010 [(150)+; IAS 360] - WW018 - BITSA
DEDUM 3D	DER01-WW010 [(150)+; IAS 320] - WW015 - ARSEP - DEDUM
DEDUM 3E	DER01-WW010 [(150)+; IAS 360] - VOR VNK [(1000)+] - WW015 - ARSEP - DEDUM
UM 3D	DER01-WW010 [(150)+; IAS 320] - WW015 - ARSEP - NDB UM
UM 3E	DER01-WW010 [(150)+; IAS 360] - VOR VNK [(1000)+] - WW015 - ARSEP - NDB UM
OKLIT 3D	DER01-WW010 [(150)+] - TURUG - OKLIT

VNUKOVO TOWER 118.300  
RADAR 126.000  
MOSCOW APPROACH See AD 2.1 UUWW-55

- WARNING:**
- All ACFT shall follow the noise abatement procedures at all times as in accordance with ICAO DOC 8168.
  - After climbing to (200) immediately contact Vnuovo-Radar on 126.000.
  - Initially cleared height of climb after take-off for all SID routes is (600).
  - Minimum climb gradient is 5.8% up to (150).
  - IAS MAX 460km/h up to FL100.

BEARINGS AND TRACKS ARE MAGNETIC  
ALTITUDES, HEIGHTS AND ELEVATIONS ARE IN METRES  
DISTANCES ARE IN KILOMETRES