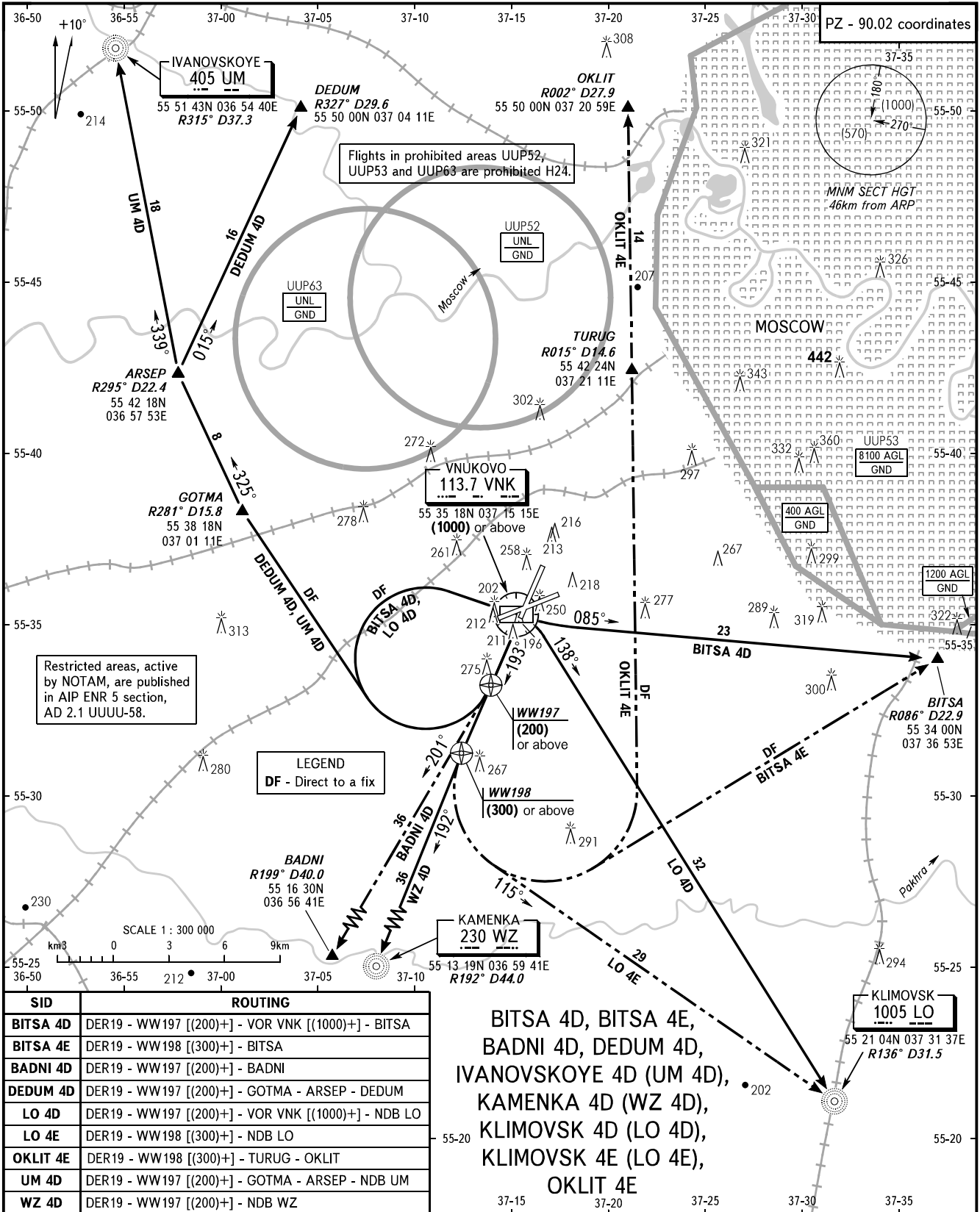


STANDARD DEPARTURE CHART
INSTRUMENT (SID) - ICAO

TRANSITION
HEIGHT : (1000)

MOSCOW, RUSSIA
VNUKOVO
RNAV RWY 19



SID	ROUTING
BITSA 4D	DER19 - WW197 [(200)+] - VOR VNK [(1000)+] - BITSA
BITSA 4E	DER19 - WW198 [(300)+] - BITSA
BADNI 4D	DER19 - WW197 [(200)+] - BADNI
DEDUM 4D	DER19 - WW197 [(200)+] - GOTMA - ARSEP - DEDUM
LO 4D	DER19 - WW197 [(200)+] - VOR VNK [(1000)+] - NDB LO
LO 4E	DER19 - WW198 [(300)+] - NDB LO
OKLIT 4E	DER19 - WW198 [(300)+] - TURUG - OKLIT
UM 4D	DER19 - WW197 [(200)+] - GOTMA - ARSEP - NDB UM
WZ 4D	DER19 - WW197 [(200)+] - NDB WZ

BITSA 4D, BITSA 4E,
BADNI 4D, DEDUM 4D,
IVANOVSKOYE 4D (UM 4D),
KAMENKA 4D (WZ 4D),
KLIMOVSK 4D (LO 4D),
KLIMOVSK 4E (LO 4E),
OKLIT 4E

VNUKOVO TOWER **118.300**
RADAR **126.000**
MOSCOW APPROACH **See AD 2.1 UUWW-55**

- WARNING:**
- All ACFT shall follow the noise abatement procedures at all times as in accordance with ICAO DOC 8168.
 - After climbing to (200) immediately contact Vnukovo-Radar on 126.000.
 - Initially cleared height of climb after take-off for all SID routes is (600).
 - IAS MAX 460km/h up to FL100.

BEARINGS AND TRACKS ARE MAGNETIC
ALTITUDES, HEIGHTS AND ELEVATIONS ARE IN METRES
DISTANCES ARE IN KILOMETRES

CHANGE: BRG