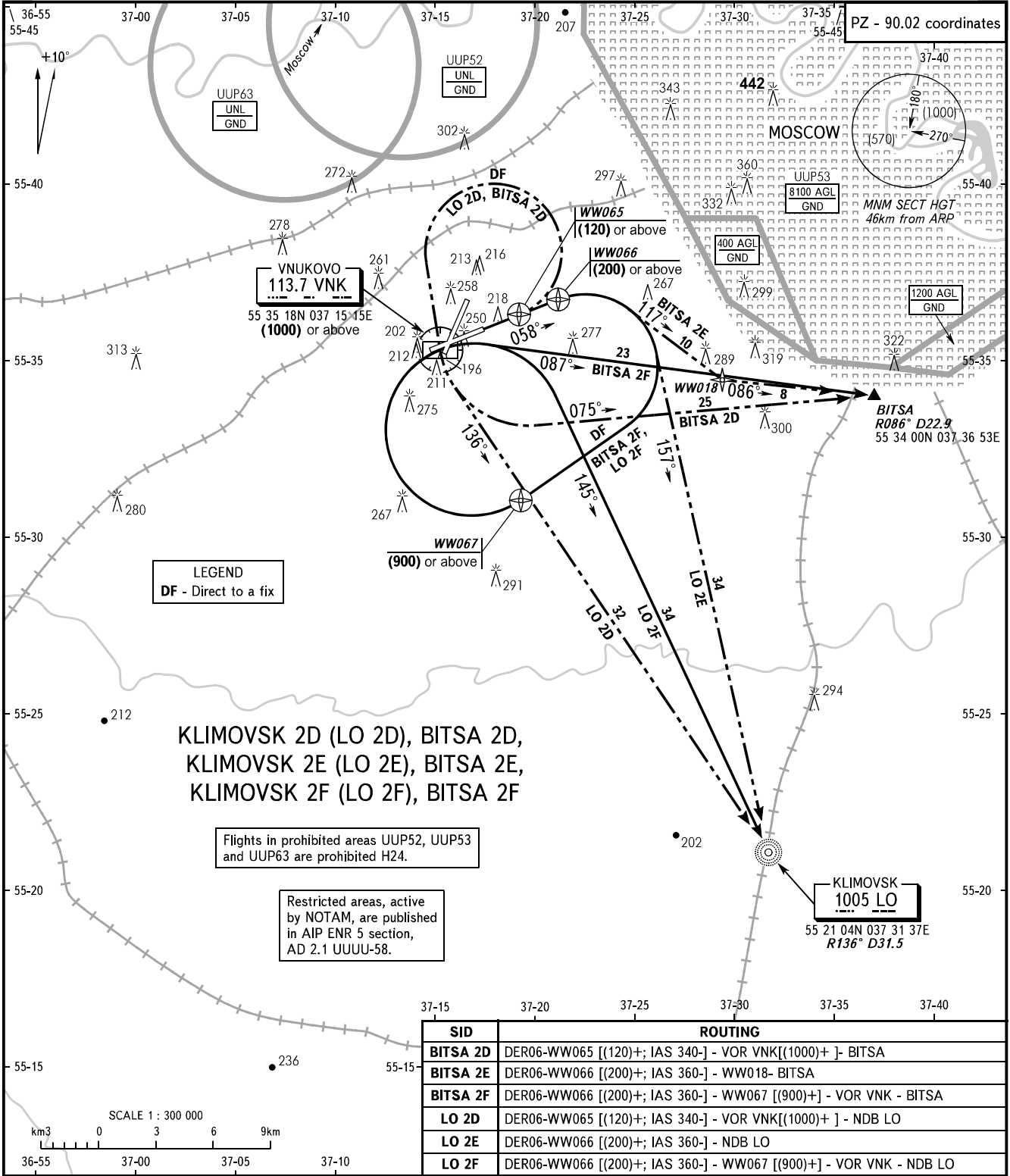


STANDARD DEPARTURE CHART
INSTRUMENT (SID) - ICAO

TRANSITION
HEIGHT : (1000)

MOSCOW, RUSSIA
VNUKOVO
RNAV RWY 06



KLIMOVSK 2D (LO 2D), BITSA 2D,
KLIMOVSK 2E (LO 2E), BITSA 2E,
KLIMOVSK 2F (LO 2F), BITSA 2F

Flights in prohibited areas UUP52, UUP53
and UUP63 are prohibited H24.

Restricted areas, active
by NOTAM, are published
in AIP ENR 5 section,
AD 2.1 UUUU-58.

SID	ROUTING
BITSA 2D	DER06-WW065 [(120)+; IAS 340-] - VOR VNK[(1000)+] - BITSA
BITSA 2E	DER06-WW066 [(200)+; IAS 360-] - WW018- BITSA
BITSA 2F	DER06-WW066 [(200)+; IAS 360-] - WW067 [(900)+] - VOR VNK - BITSA
LO 2D	DER06-WW065 [(120)+; IAS 340-] - VOR VNK[(1000)+] - NDB LO
LO 2E	DER06-WW066 [(200)+; IAS 360-] - NDB LO
LO 2F	DER06-WW066 [(200)+; IAS 360-] - WW067 [(900)+] - VOR VNK - NDB LO

VNUKOVO TOWER **118.300**
RADAR **126.000**
MOSCOW APPROACH **See AD 2.1 UUUW-55**

- WARNING:**
- All ACFT shall follow the noise abatement procedures at all times as in accordance with ICAO DOC 8168.
 - After climbing to (200) immediately contact Vnuکوvo-Radar on 126.000.
 - Initially cleared height of climb after take-off for all SID routes is (600).
 - Minimum climb gradient is 5.8% up to (120).
 - IAS MAX 460km/h up to FL100.

BEARINGS AND TRACKS ARE MAGNETIC
ALTITUDES, HEIGHTS AND ELEVATIONS ARE IN METRES
DISTANCES ARE IN KILOMETRES

CHANGE: New chart