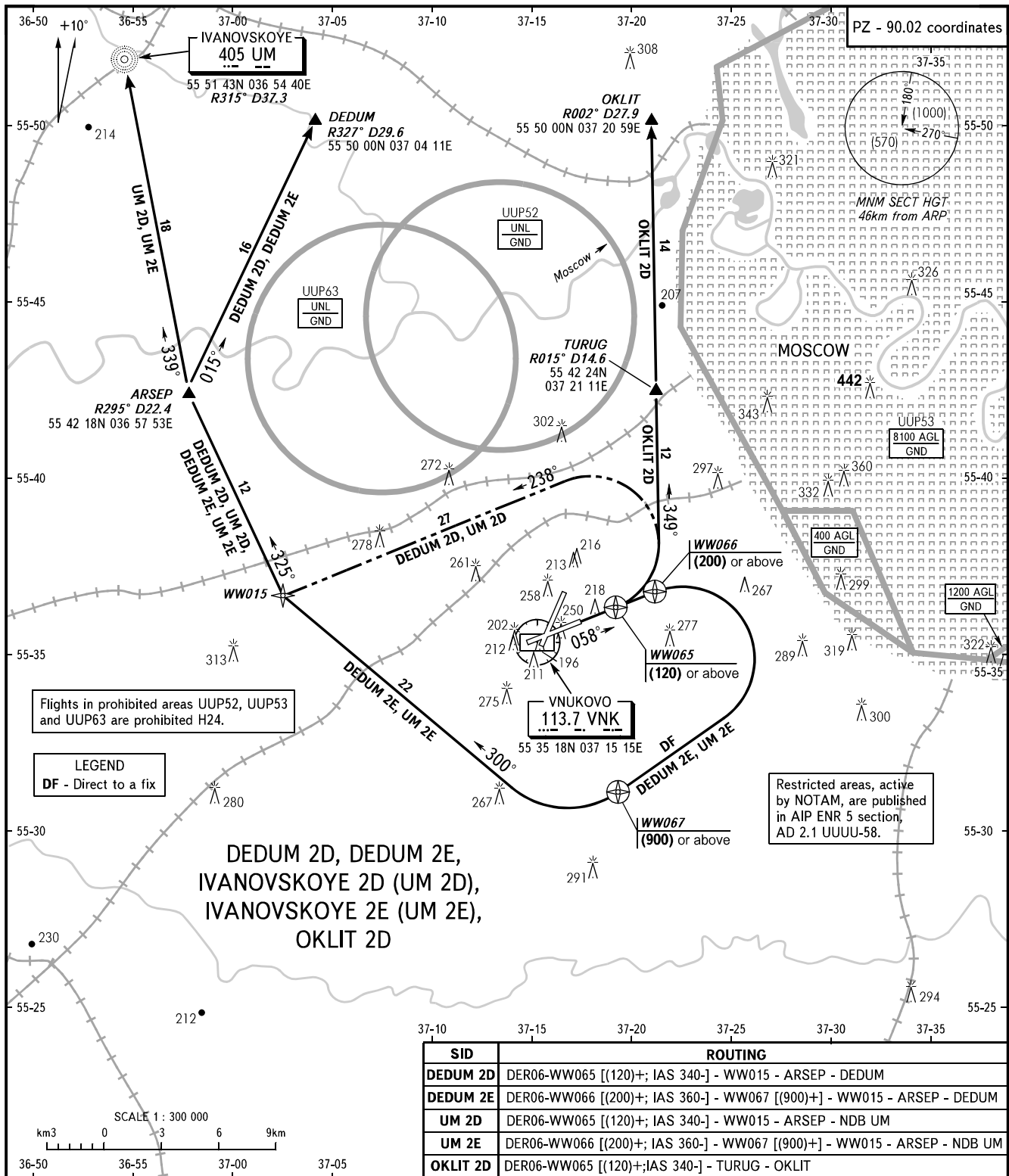


STANDARD DEPARTURE CHART
INSTRUMENT (SID) - ICAO

TRANSITION
HEIGHT : (1000)

MOSCOW, RUSSIA
VNUKOVO
RNAV RWY 06



SID	ROUTING
DEDUM 2D	DER06-WW065 [(120)+; IAS 340-] - WW015 - ARSEP - DEDUM
DEDUM 2E	DER06-WW066 [(200)+; IAS 360-] - WW067 [(900)+] - WW015 - ARSEP - DEDUM
UM 2D	DER06-WW065 [(120)+; IAS 340-] - WW015 - ARSEP - NDB UM
UM 2E	DER06-WW066 [(200)+; IAS 360-] - WW067 [(900)+] - WW015 - ARSEP - NDB UM
OKLIT 2D	DER06-WW065 [(120)+; IAS 340-] - TURUG - OKLIT

VNUKOVO TOWER 118.300
RADAR 126.000
MOSCOW APPROACH See AD 2.1 UUWW-55

- WARNING:**
- All ACFT shall follow the noise abatement procedures at all times as in accordance with ICAO DOC 8168.
 - After climbing to (200) immediately contact Vnuovo-Radar on 126.000.
 - Initially cleared height of climb after take-off for all SID routes is (600).
 - Minimum climb gradient is 5.8% up to (120).
 - IAS MAX 460km/h up to FL100.

BEARINGS AND TRACKS ARE MAGNETIC
ALTITUDES, HEIGHTS AND ELEVATIONS ARE IN METRES
DISTANCES ARE IN KILOMETRES