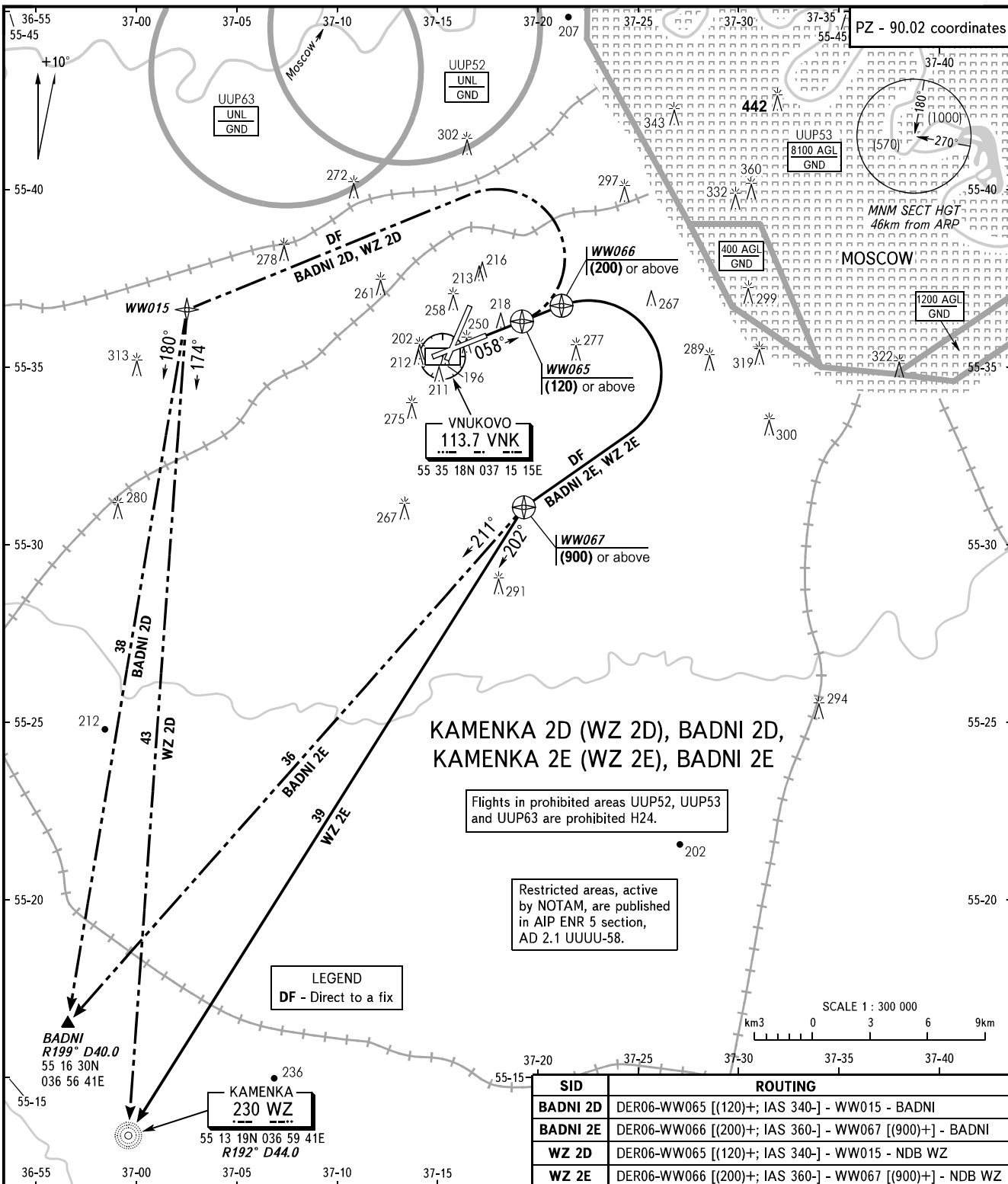


STANDARD DEPARTURE CHART
INSTRUMENT (SID) - ICAO

TRANSITION
HEIGHT : (1000)

MOSCOW, RUSSIA
VNUKOVO
RNAV RWY 06

PZ - 90.02 coordinates

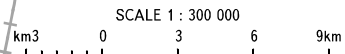


KAMENKA 2D (WZ 2D), BADNI 2D,
KAMENKA 2E (WZ 2E), BADNI 2E

Flights in prohibited areas UUP52, UUP53
and UUP63 are prohibited H24.

Restricted areas, active
by NOTAM, are published
in AIP ENR 5 section,
AD 2.1 UUUU-58.

LEGEND
DF - Direct to a fix



SID	ROUTING
BADNI 2D	DER06-WW065 [(120)+; IAS 340-] - WW015 - BADNI
BADNI 2E	DER06-WW066 [(200)+; IAS 360-] - WW067 [(900)+] - BADNI
WZ 2D	DER06-WW065 [(120)+; IAS 340-] - WW015 - NDB WZ
WZ 2E	DER06-WW066 [(200)+; IAS 360-] - WW067 [(900)+] - NDB WZ

VNUKOVO TOWER **118.300**
RADAR **126.000**
MOSCOW APPROACH **See AD 2.1 UUUW-55**

- WARNING:**
- All ACFT shall follow the noise abatement procedures at all times as in accordance with ICAO DOC 8168.
 - After climbing to (200) immediately contact Vnukovo-Radar on 126.000.
 - Initially cleared height of climb after take-off for all SID routes is (600).
 - Minimum climb gradient is 5.8% up to (120).
 - IAS MAX 460km/h up to FL100.

BEARINGS AND TRACKS ARE MAGNETIC
ALTITUDES, HEIGHTS AND ELEVATIONS ARE IN METRES
DISTANCES ARE IN KILOMETRES

CHANGE: New chart