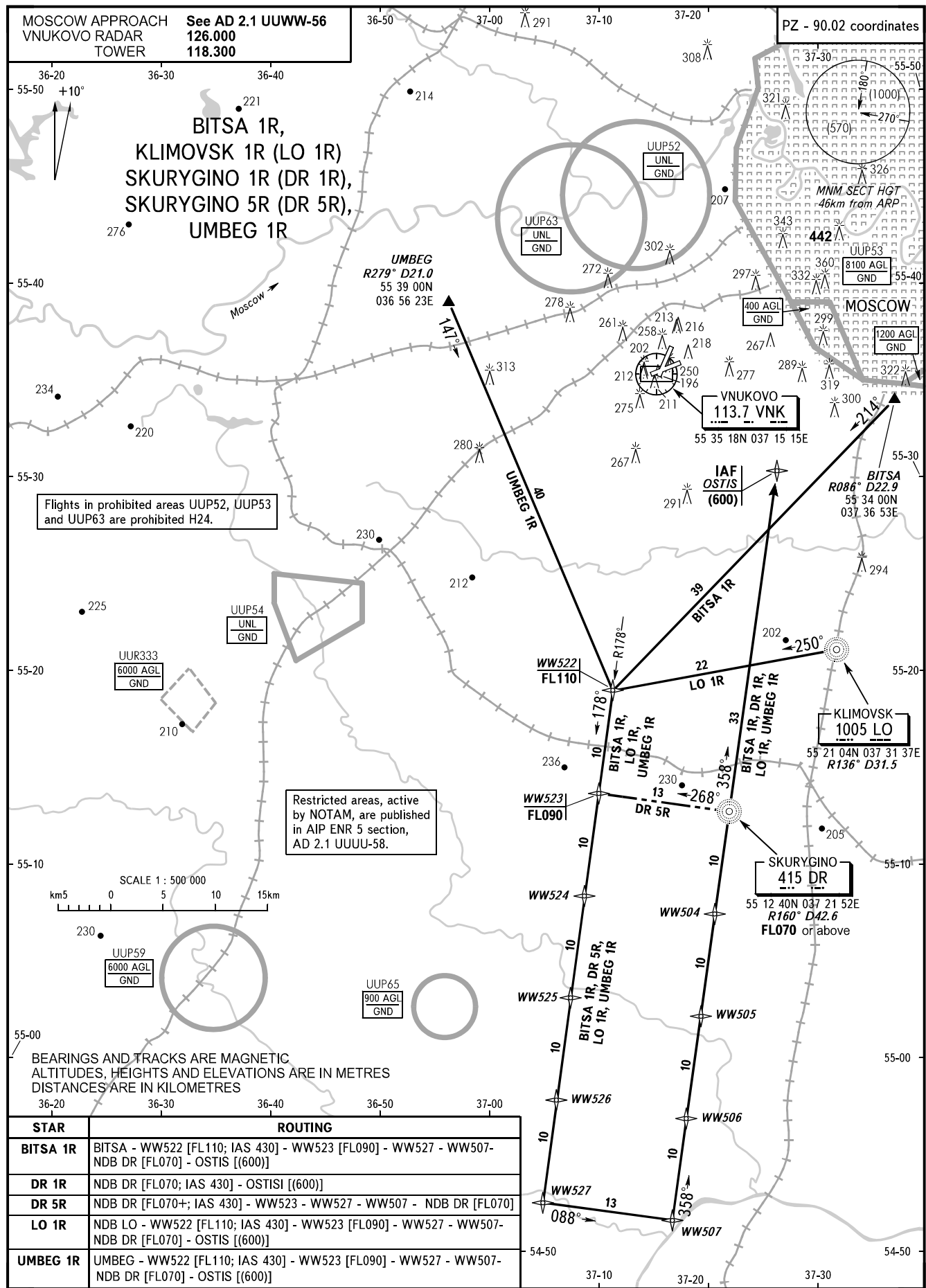


STANDARD ARRIVAL CHART  
INSTRUMENT (STAR) - ICAO

TRANSITION  
LEVEL: **By ATC**

MOSCOW, RUSSIA  
VNUKOVO  
RNAV RWY 24



CHANGE: New chart

STAR	ROUTING
<b>BITSA 1R</b>	BITSA - WW522 [FL110; IAS 430] - WW523 [FL090] - WW527 - WW507 - NDB DR [FL070] - OSTIS [(600)]
<b>DR 1R</b>	NDB DR [FL070; IAS 430] - OSTISI [(600)]
<b>DR 5R</b>	NDB DR [FL070+; IAS 430] - WW523 - WW527 - WW507 - NDB DR [FL070]
<b>LO 1R</b>	NDB LO - WW522 [FL110; IAS 430] - WW523 [FL090] - WW527 - WW507 - NDB DR [FL070] - OSTIS [(600)]
<b>UMBEG 1R</b>	UMBEG - WW522 [FL110; IAS 430] - WW523 [FL090] - WW527 - WW507 - NDB DR [FL070] - OSTIS [(600)]