

STANDARD ARRIVAL CHART
INSTRUMENT (STAR) - ICAO

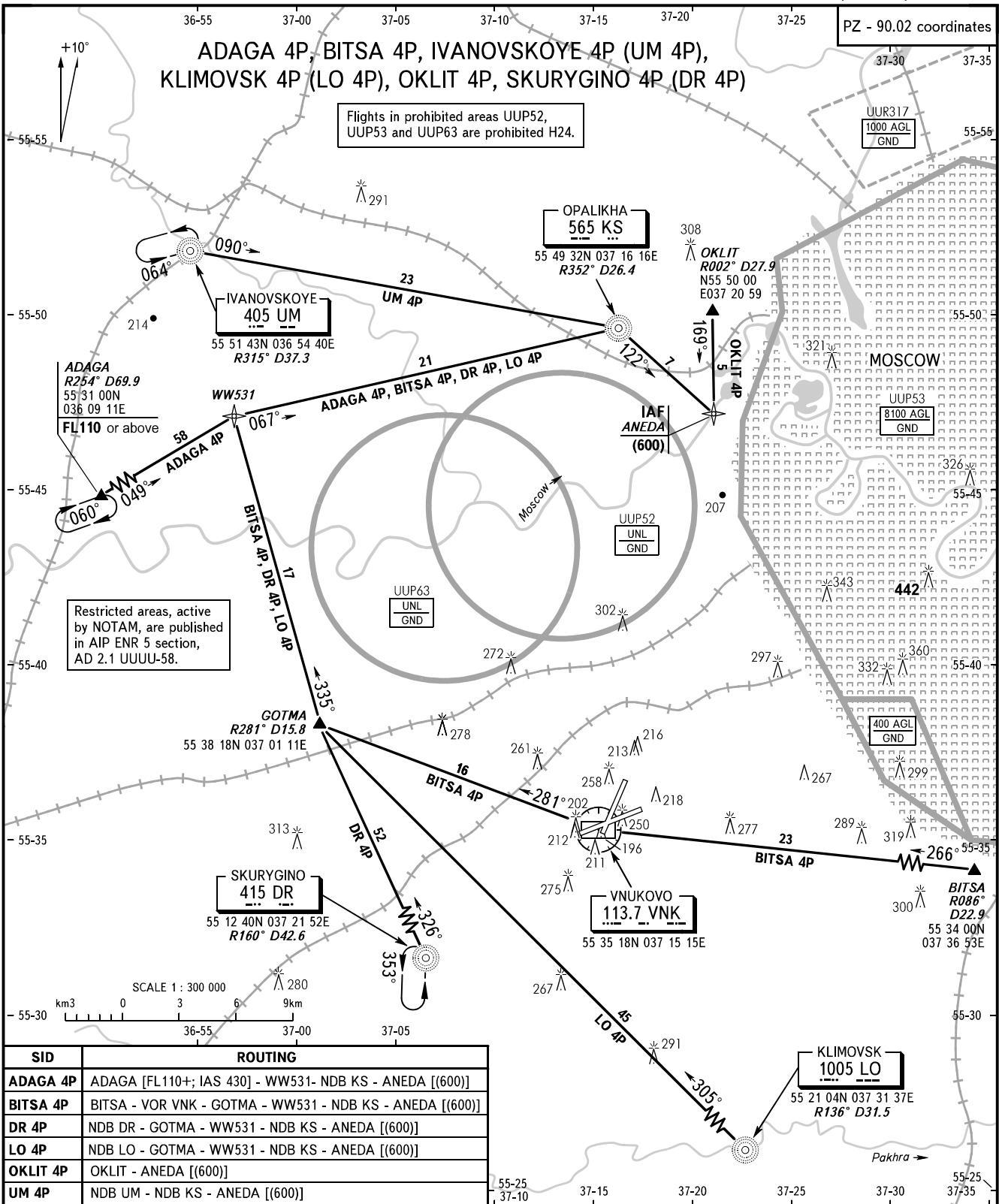
TRANSITION
LEVEL: **By ATC**

MOSCOW, RUSSIA
VNUKOVO
RNAV (GNSS) RWY 19

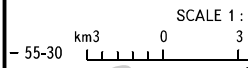
ADAGA 4P, BITSA 4P, IVANOVSKOYE 4P (UM 4P),
KLIMOVSK 4P (LO 4P), OKLIT 4P, SKURYGINO 4P (DR 4P)

Flights in prohibited areas UUP52,
UUP53 and UUP63 are prohibited H24.

PZ - 90.02 coordinates



Restricted areas, active by NOTAM, are published in AIP ENR 5 section, AD 2.1 UUUU-58.



SID	ROUTING
ADAGA 4P	ADAGA [FL110+; IAS 430] - WW531- NDB KS - ANEDA [(600)]
BITSA 4P	BITSA - VOR VNK - GOTMA - WW531 - NDB KS - ANEDA [(600)]
DR 4P	NDB DR - GOTMA - WW531 - NDB KS - ANEDA [(600)]
LO 4P	NDB LO - GOTMA - WW531 - NDB KS - ANEDA [(600)]
OKLIT 4P	OKLIT - ANEDA [(600)]
UM 4P	NDB UM - NDB KS - ANEDA [(600)]

VNUKOVO TOWER **118.300**
RADAR **126.000**
MOSCOW APPROACH **See AD 2.1 UUWW-56**

BEARINGS AND TRACKS ARE MAGNETIC
ALTITUDES, HEIGHTS AND ELEVATIONS ARE IN METRES
DISTANCES ARE IN KILOMETRES

CHANGE: New chart