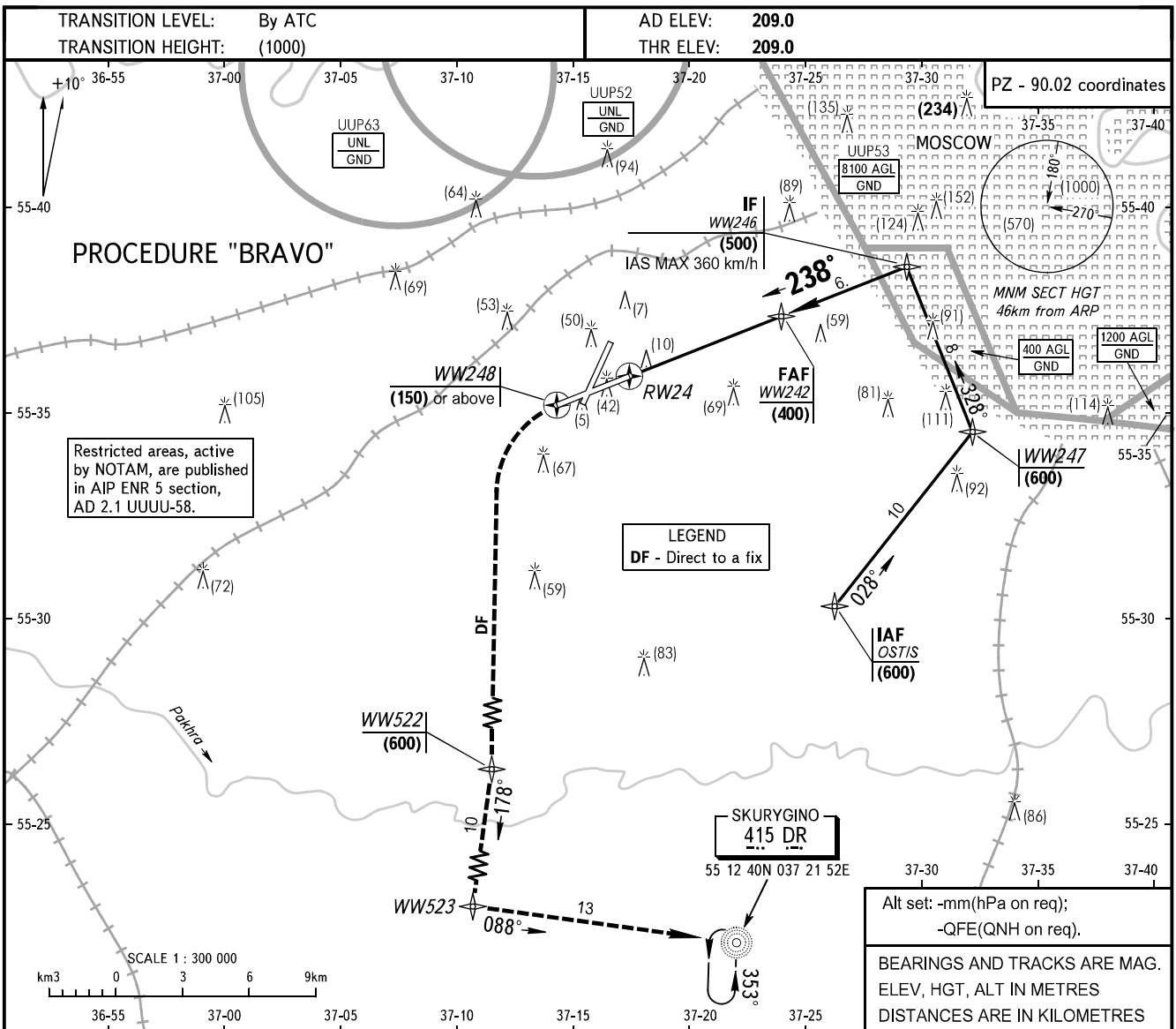


**INSTRUMENT
APPROACH
CHART - ICAO**

MOSCOW APPROACH See AD 2.1 UUWW-56
VNUKOVO RADAR 126.000
PRECISION 118.300

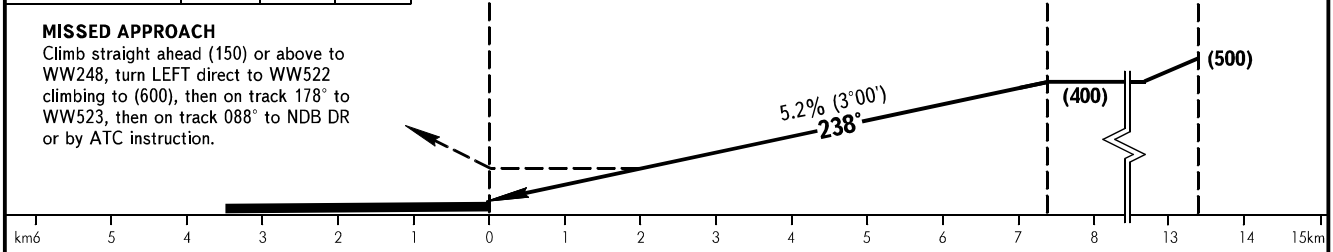
**MOSCOW, RUSSIA
VNUKOVO
RNAV (GNSS) RWY 24**



DISTANCE to MAPt	3.0	5.0	7.0
HGT	(175)	(275)	(380)

MISSED APPROACH

Climb straight ahead (150) or above to WW248, turn LEFT direct to WW522 climbing to (600), then on track 178° to WW523, then on track 088° to NDB DR or by ATC instruction.



OCA/H		A	B	C	D
Straight-in Approach	RNAV (GNSS)	333(125)	333(125)	333(125)	333(125)

WARNING
After climbing to (200) immediately contact Vnuovo-Radar on frequency 126.000 MHz.

GROUND SPEED	km/h	150	180	210	240	270	300	330	360	390	420	450
RATE OF DESCENT	m/s	2.2	2.6	3.0	3.5	3.9	4.3	4.8	5.2	5.6	6.1	6.5

CHANGE: New chart