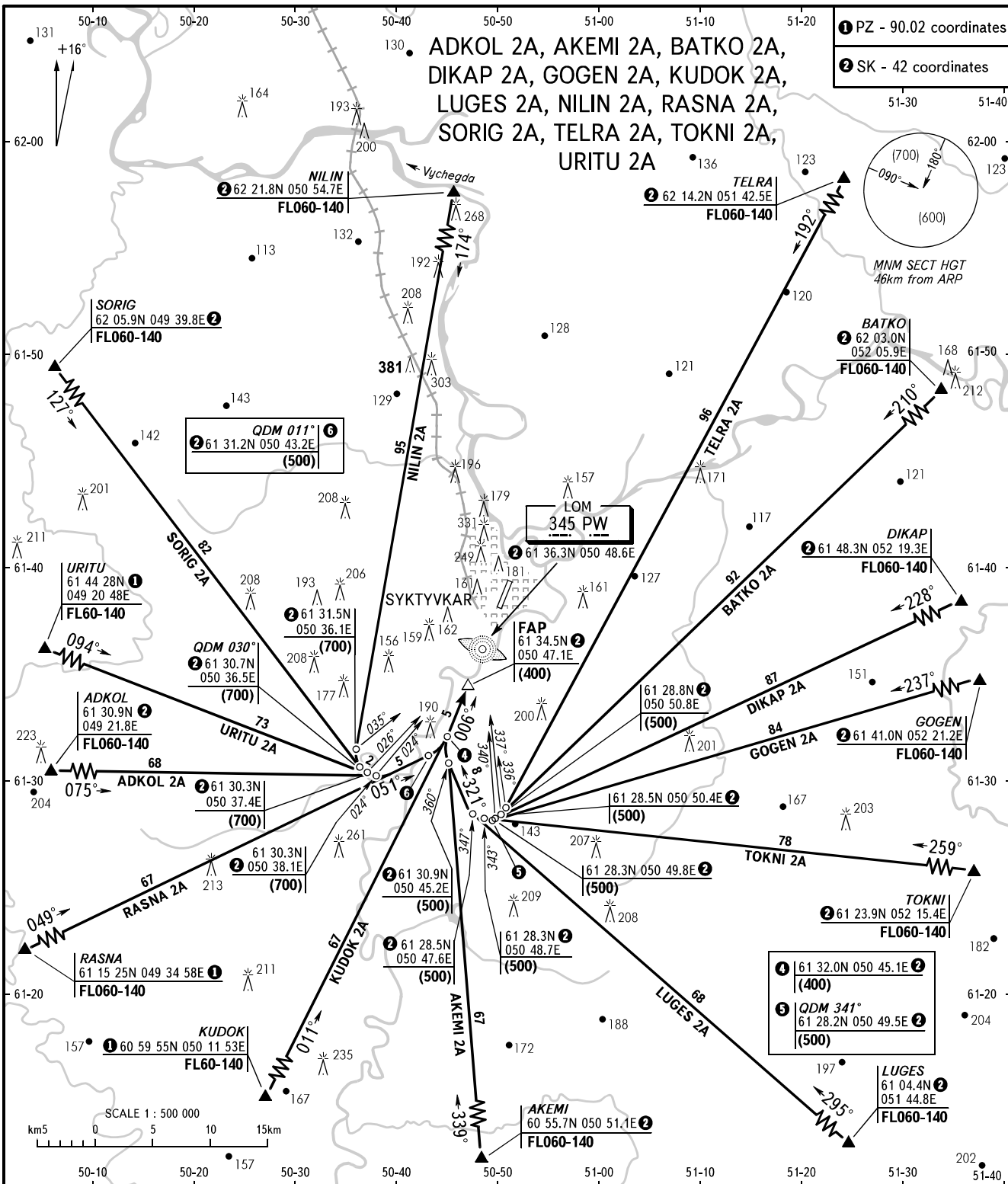


STANDARD ARRIVAL CHART
INSTRUMENT (STAR) - ICAO

SYKTYVKAR, RUSSIA
SYKTYVKAR
RWY 01

TRANSITION
LEVEL: **3**



SIVKAR KRUG 124.600

TRANSITION LEVEL:

- FL040 when atmospheric pressure is 760mm mercury column or above;
- FL050 when atmospheric pressure is less than 760mm mercury column and is 733mm mercury column or above;
- FL060 when atmospheric pressure is less than 733mm mercury column and is 706mm mercury column or above.

WARNING:

1. Holding area is located over LOM.
2. During straight-in approach crossing DIST 40km (from ARP) shall be carried out at not above FL060.
3. The control over maintaining STAR routes shall be carried out by Sivkar-Krug on frequency 124.600 MHz.

BEARINGS AND TRACKS ARE MAGNETIC
ALTITUDES, HEIGHTS AND ELEVATIONS ARE IN METRES
DISTANCES ARE IN KILOMETRES