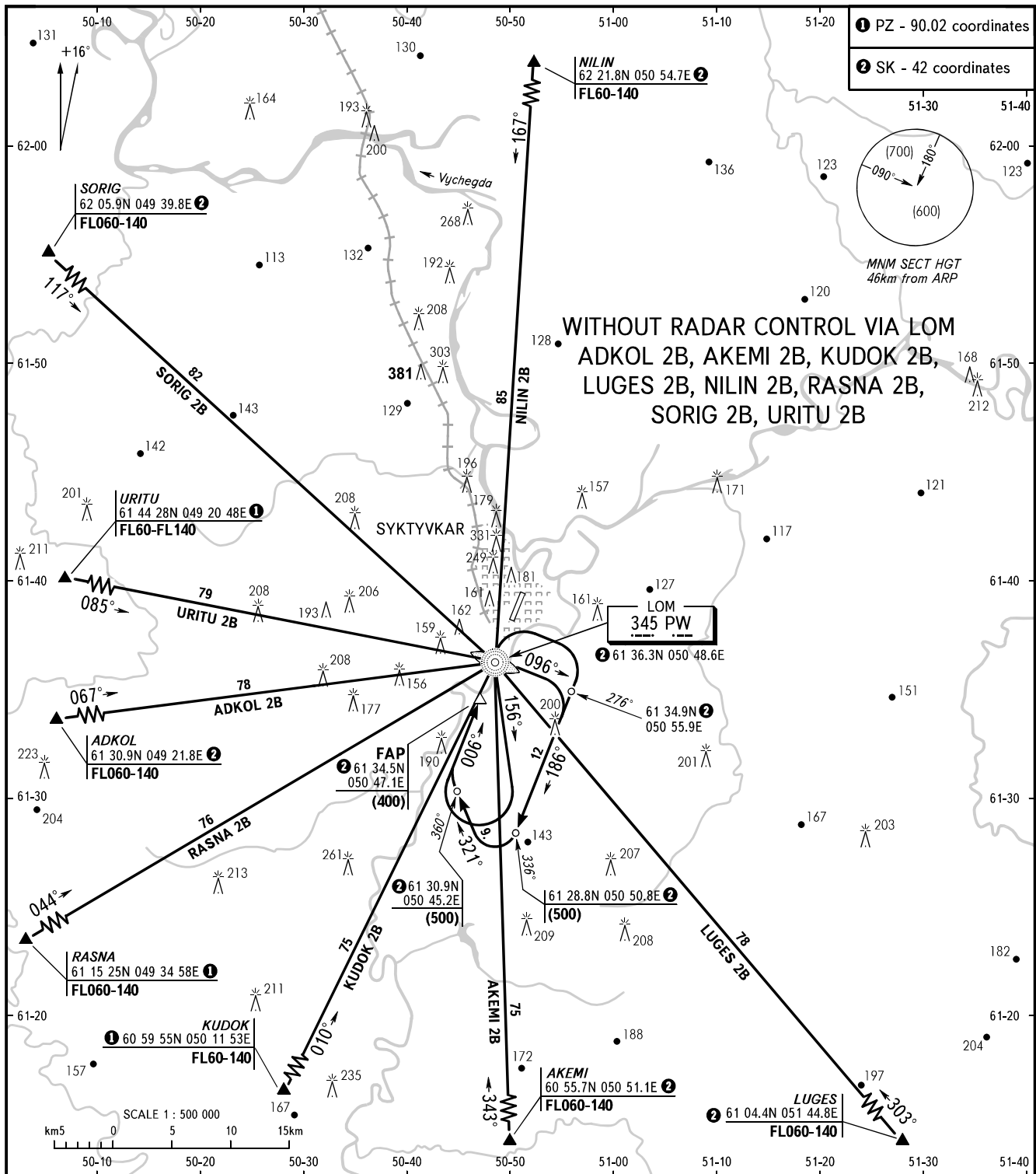


STANDARD ARRIVAL CHART  
INSTRUMENT (STAR) - ICAO

SYKTYVKAR, RUSSIA  
SYKTYVKAR  
RWY 01

TRANSITION  
LEVEL : 3



SIVKAR KRUG

124.6

3 TRANSITION LEVEL:

- FL040 when atmospheric pressure is 760mm mercury column or above;
- FL050 when atmospheric pressure is less than 760mm mercury column and is 733mm mercury column or above;
- FL060 when atmospheric pressure is less than 733mm mercury column and is 706mm mercury column or above.

WARNING:

1. ACFT shall pass LOM at not below the lower safe flight level.
2. After passing LOM from arrival sector 2 CAT A, B ACFT and HEL shall proceed on track 156° for 1min, CAT C, D ACFT shall proceed for 1min 30sec then turn right and proceed to LOM. After passing LOM turn right and carry out instrument approach procedure.
3. After passing LOM from arrival sector 3 ACFT shall turn right and carry out instrument approach procedure.
4. All turns shall be carried out with 25° bank.

BEARINGS AND TRACKS ARE MAGNETIC  
ALTITUDES, HEIGHTS AND ELEVATIONS ARE IN METRES  
DISTANCES ARE IN KILOMETRES