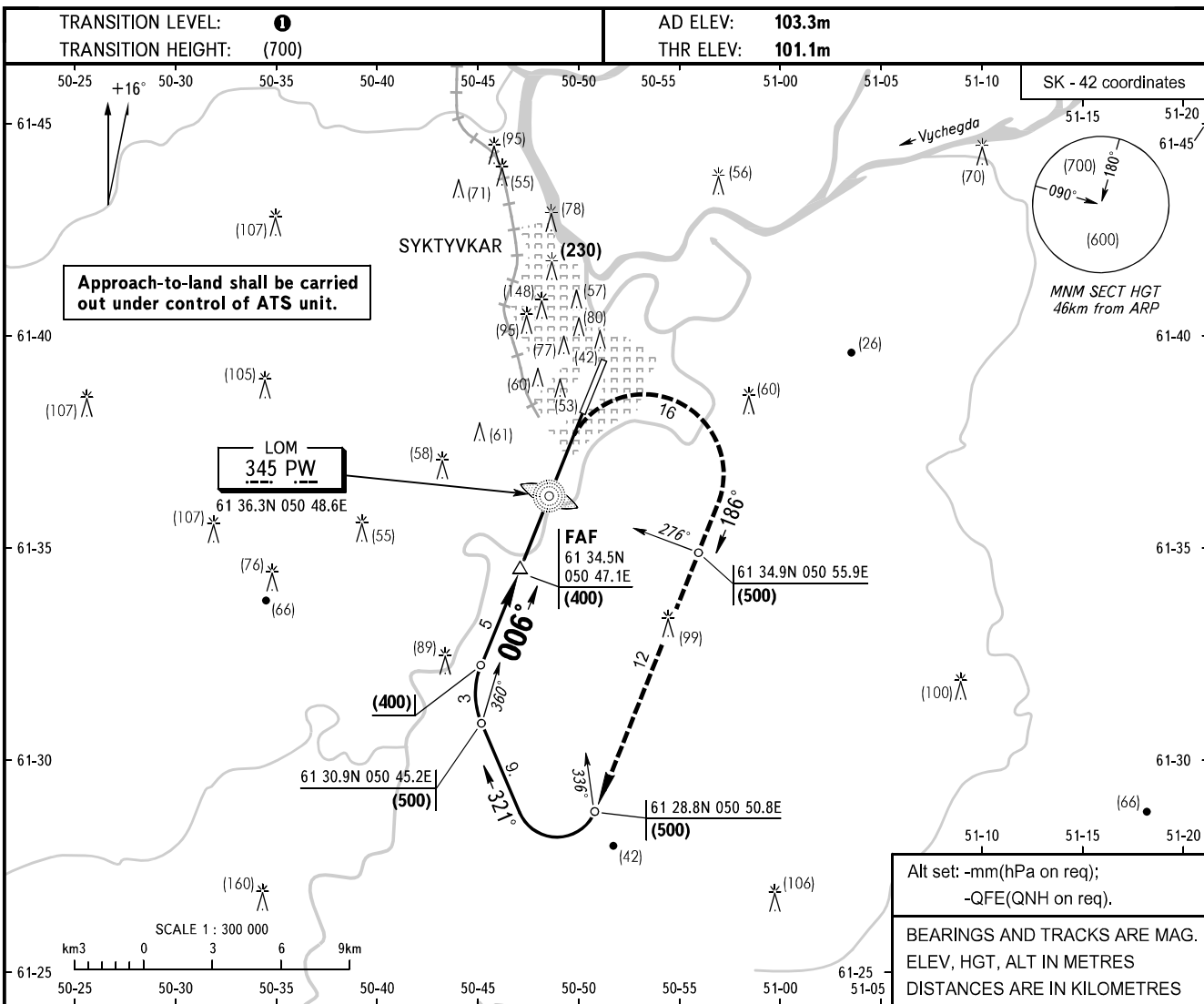


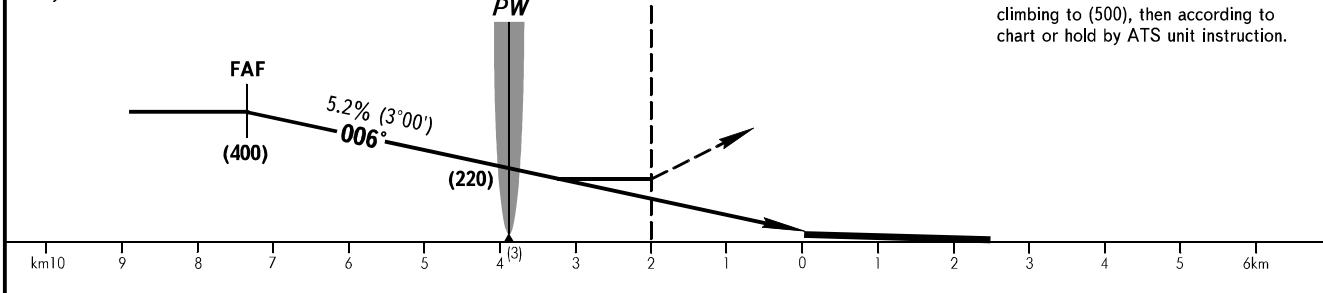
**INSTRUMENT  
APPROACH  
CHART - ICAO**

SIVKAR KRUG **124.600**

**SYKTYVKAR, RUSSIA**  
SYKTYVKAR  
NDB (LOM) RWY 01



FAF is fixed by TAR. By ATC.



**MISSED APPROACH**  
At MDH turn RIGHT on track 186° climbing to (500), then according to chart or hold by ATS unit instruction.

OCA/H		A	B	C	D
Straight-in	<b>NDB (LOM)</b>				
	<b>With FAF</b>	226(124)	226(124)	226(124)	226(124)
Approach	<b>WO FAF</b>	267(165)	267(165)	267(165)	267(165)

**TRANSITION LEVEL:**  
 - FL040 when atmospheric pressure is 760mm mercury column or above;  
 - FL050 when atmospheric pressure is less than 760mm mercury column and is 733mm mercury column or above;  
 - FL060 when atmospheric pressure is less than 733mm mercury column and is 706mm mercury column or above.

**WARNING**  
Holding area is located over LOM.

GROUND SPEED	km/h	150	180	210	240	270	300	330	360	390	420	450
LOM-THR 3900m	min:sec	1.34	1.18	1.06	0.58	0.52	0.47	0.43	0.39	0.36	0.33	0.31
RATE OF DESCENT	m/s	2.2	2.6	3.0	3.5	3.9	4.3	4.8	5.2	5.6	6.1	6.5