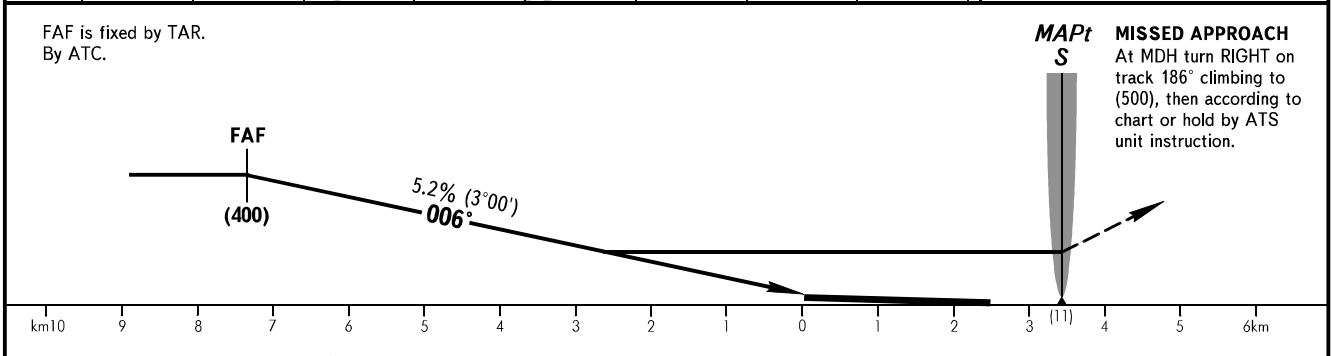
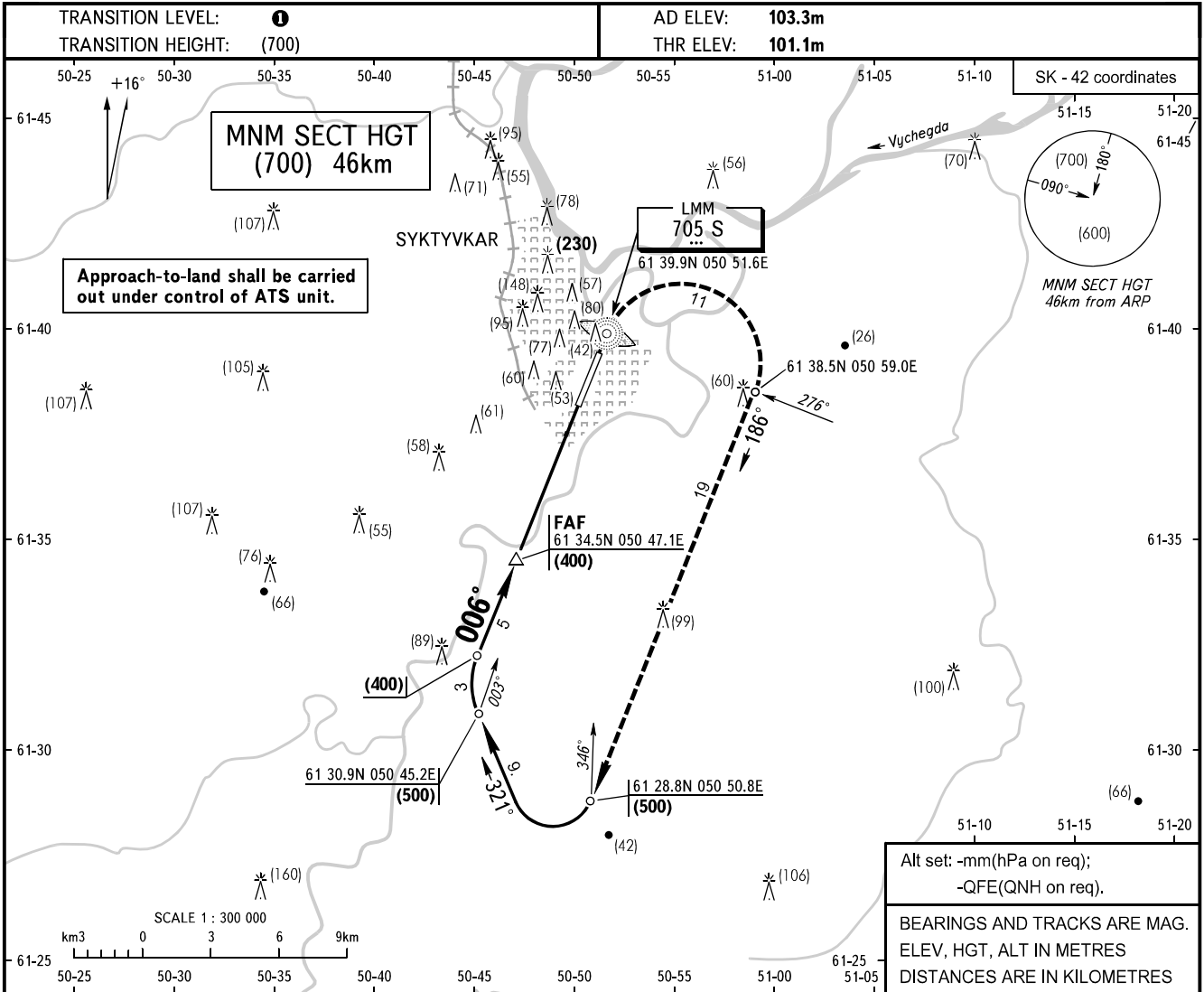


**INSTRUMENT
APPROACH
CHART - ICAO**

SIVKAR KRUG **124.600**

SYKTYVKAR, RUSSIA
SYKTYVKAR
NDB RWY 01



| OCA/H | | A | B | C | D |
|-------------|-----|-------------------|----------|----------|----------|
| Straight-in | NDB | With FAF 228(126) | 228(126) | 228(126) | 228(126) |
| | | WO FAF 303(201) | 303(201) | 303(201) | 303(201) |
| Approach | | | | | |

① TRANSITION LEVEL:
 - FL040 when atmospheric pressure is 760mm mercury column or above;
 - FL050 when atmospheric pressure is less than 760mm mercury column and is 733mm mercury column or above;
 - FL060 when atmospheric pressure is less than 733mm mercury column and is 706mm mercury column or above.

| | | | | | | | | | | | | |
|-----------------|------|-----|-----|-----|-----|-----|-----|-----|-----|-----|-----|-----|
| GROUND SPEED | km/h | 150 | 180 | 210 | 240 | 270 | 300 | 330 | 360 | 390 | 420 | 450 |
| RATE OF DESCENT | m/s | 2.2 | 2.6 | 3.0 | 3.5 | 3.9 | 4.3 | 4.8 | 5.2 | 5.6 | 6.1 | 6.5 |

CHANGE: OCA/H