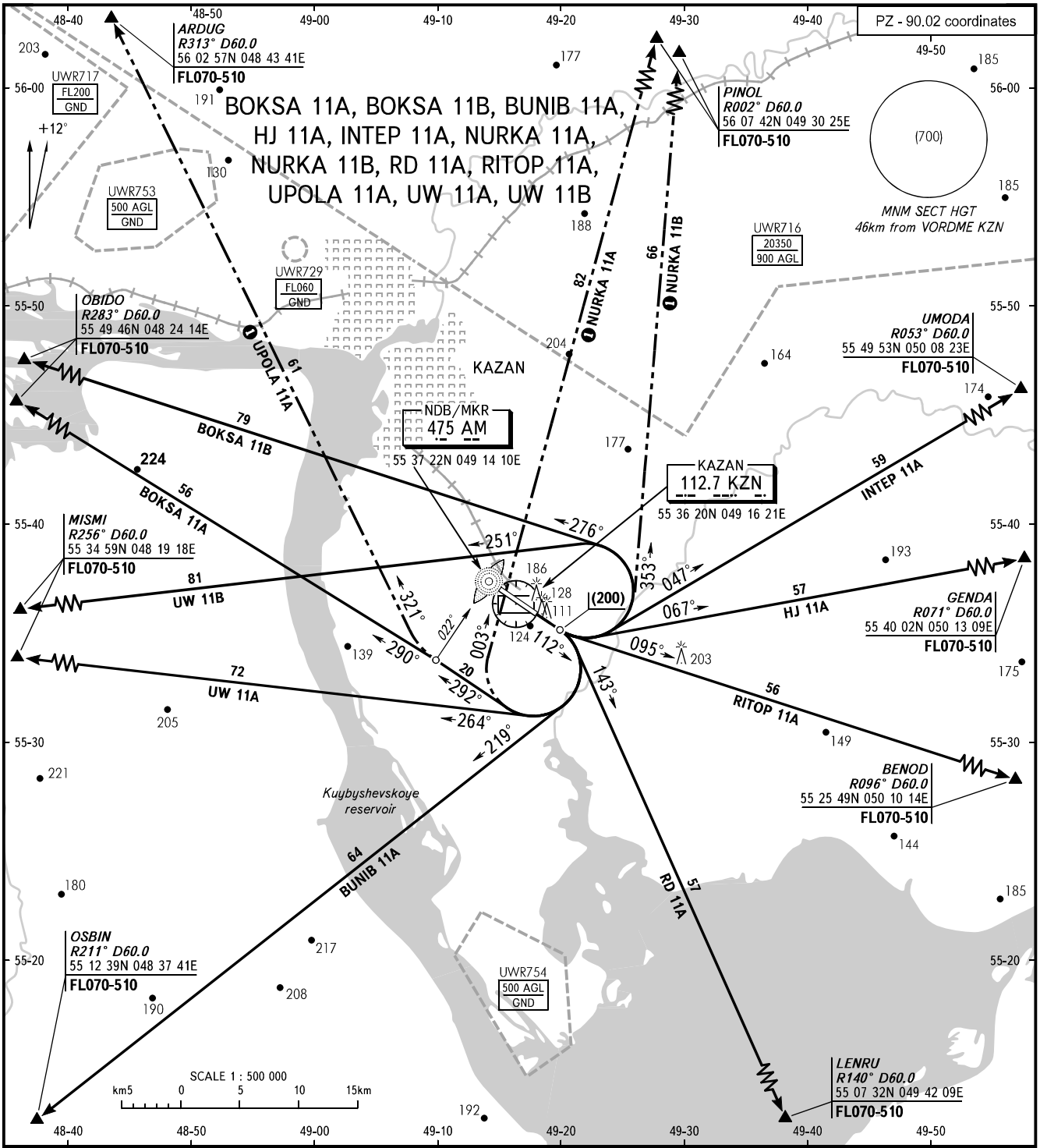


STANDARD DEPARTURE CHART
INSTRUMENT (SID) - ICAO

TRANSITION
HEIGHT : (900)

KAZAN, RUSSIA
KAZAN
RWY 11



TOWER 120.300
RADAR 119.400
CONTROL Sector 3 128.625

① Only for Russian users of airspace.

WARNING
Proceed along NURKA 11B route with
climb gradient of not less than 6.0%

BEARINGS AND TRACKS ARE MAGNETIC
ALTITUDES, HEIGHTS AND ELEVATIONS ARE IN METRES
DISTANCES ARE IN KILOMETRES

CHANGE: New chart