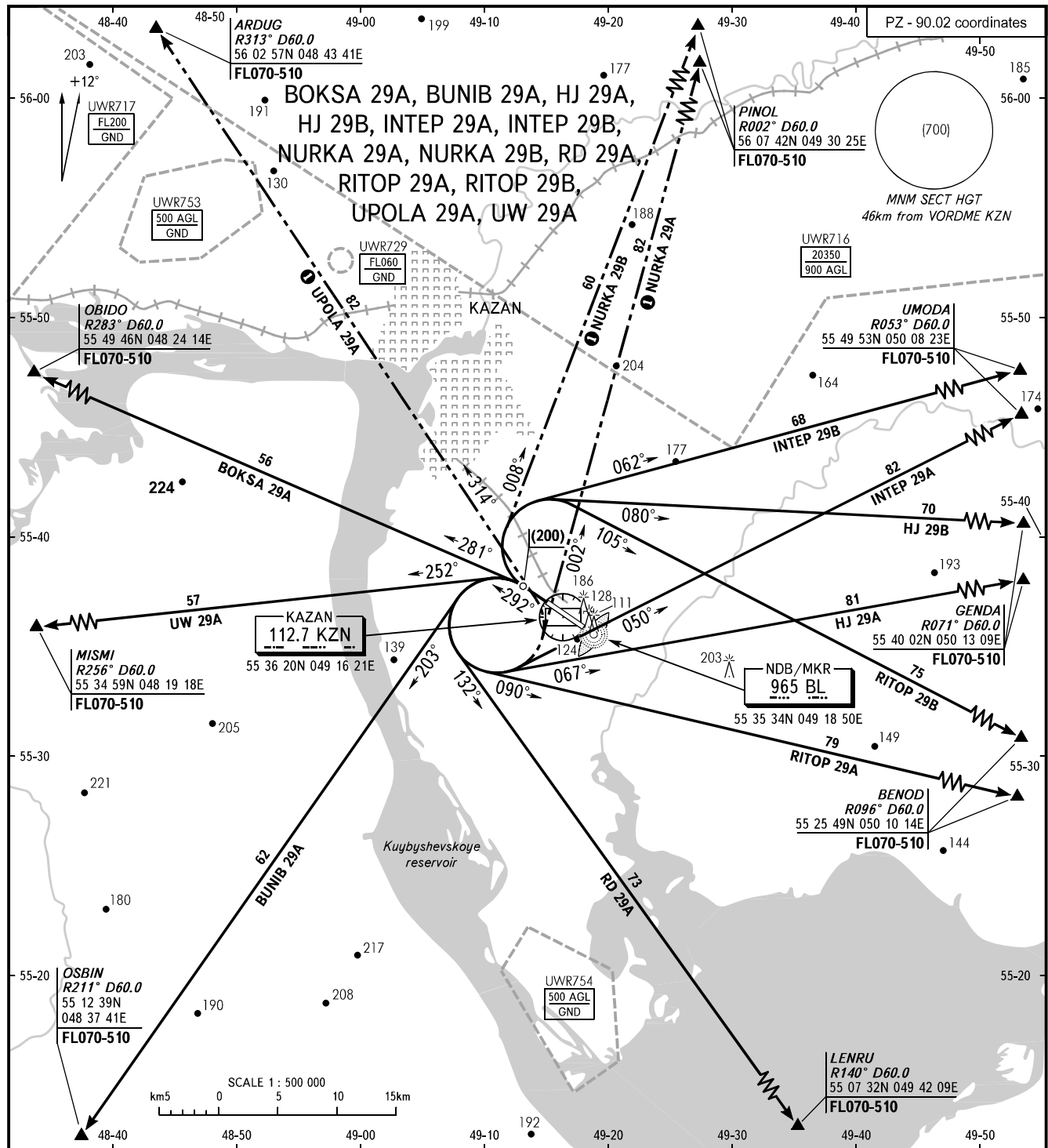


STANDARD DEPARTURE CHART  
INSTRUMENT (SID) - ICAO

TRANSITION  
HEIGHT : (900)

KAZAN, RUSSIA  
KAZAN  
RWY 29



TOWER 120.300  
RADAR 119.400  
CONTROL Sector 3 128.625

① Only for Russian users of airspace.

**WARNING**  
Proceed along NURKA 29B route with  
climb gradient of not less than 6.0%

BEARINGS AND TRACKS ARE MAGNETIC  
ALTITUDES, HEIGHTS AND ELEVATIONS ARE IN METRES  
DISTANCES ARE IN KILOMETRES