

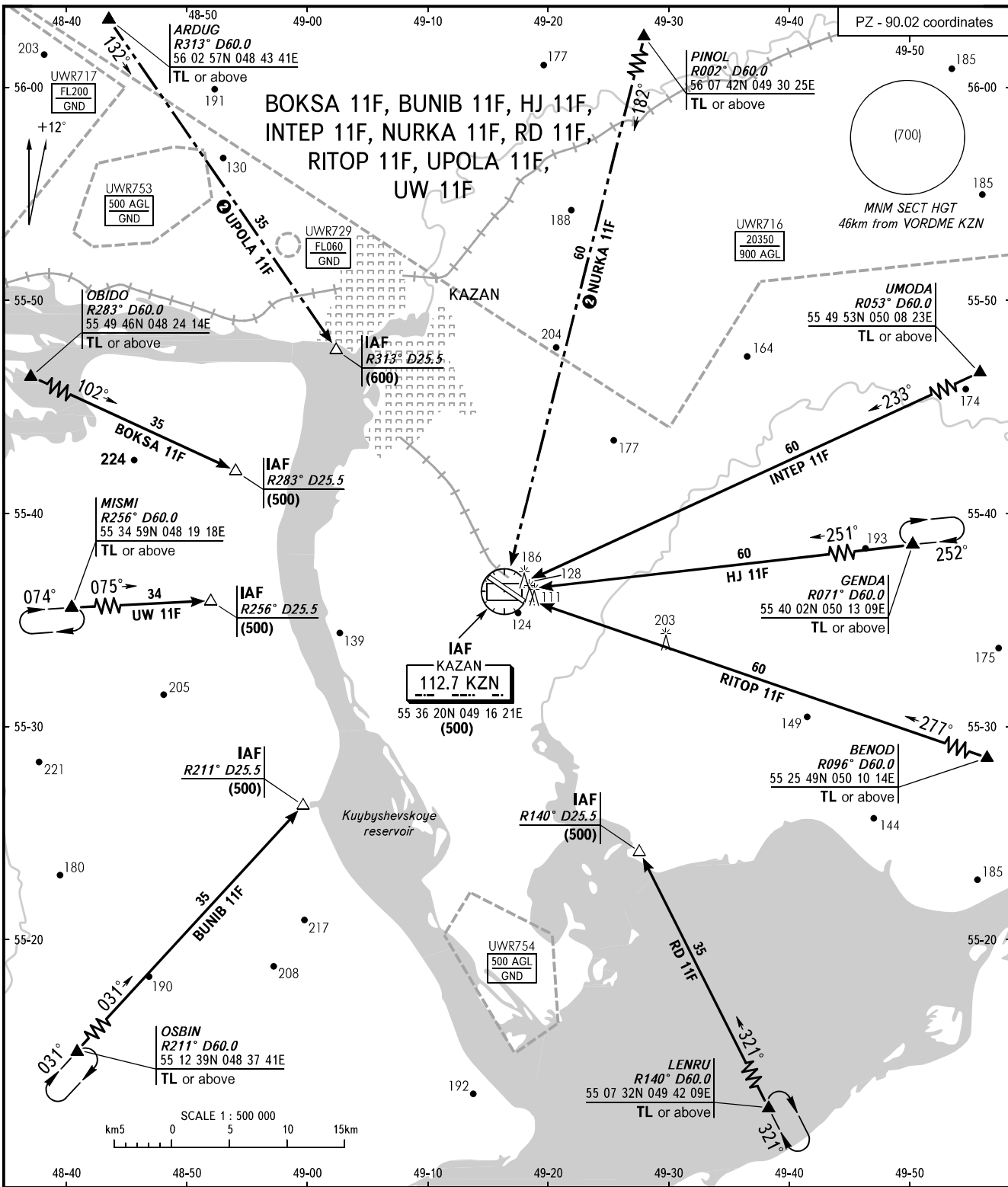
STANDARD ARRIVAL CHART
INSTRUMENT (STAR) - ICAO

KAZAN, RUSSIA

KAZAN

VORDME RWY 11

TRANSITION
LEVEL: ①



CONTROL Sector 3 **128.625**
RADAR **119.400**
TOWER **120.300**

① TRANSITION LEVEL:
- FL050 when atmospheric pressure is 749mm mercury column or above;
- FL060 when atmospheric pressure is 748-722mm mercury column;
- FL070 when atmospheric pressure is 721mm mercury column or less.

② Only for Russian users of airspace.

BEARINGS AND TRACKS ARE MAGNETIC
ALTITUDES, HEIGHTS AND ELEVATIONS ARE IN METRES
DISTANCES ARE IN KILOMETRES

CHANGE: New chart